



EMINENT GOLD

TSX.V - EMNT OTCQB - EMGDF

Pursuing Major Gold Discoveries in the Great Basin

January 2023

Disclaimer



This document has been prepared by Eminent Gold (the “Company”) to introduce the Company’s mineral exploration projects. Because it is a high level summary presentation, the information contained herein cannot contain all the information that should be reviewed before making an investment decision.

SUMMARY OF CAUTIONARY NOTES

- Forward looking statements are inherently uncertain
- Canadian mineral disclosure differs from U.S. mineral disclosure
- See full disclosure records for Eminent Gold at www.sedar.com

Justin Milliard, P. Geo is the QP who assumes responsibility for the technical contents of this Presentation.

A Nevada Discovery Focused Company...



- 4 robust gold exploration projects in Nevada
- A portfolio driven by new concepts for major discoveries
- Strong multidisciplinary team with past discovery success



- ✓ **Fraser Institute ranks Nevada as the third friendliest mining jurisdiction in the world**
- ✓ **Nevada endowment of 270 M oz Au and 700 M oz Ag**
- ✓ **US is the third largest Au producer of which Nevada makes up 74%**

Experienced and Balanced Team



Management

Paul Sun P.Eng, MBA, CFA
CEO, President, and Director

15 year capital markets and banking professional, mining engineer, and over 20 years in finance and operations

Daniel McCoy PhD
Chief Geologist and Director

Former CEO of Keegan Resources (5M oz Esaase Deposit) and Chief Geo at Cayden Resources (El Barqueno) that was sold to Agnico Eagle

Martin Bajic CPA, CA
CFO

Over a decade of experience serving as a director, CFO or consultant of publicly traded companies

Board of Directors

Paul Sun P.Eng, MBA, CFA
CEO, President, and Director

Daniel McCoy PhD
Chief Geologist and Director

Ann Carpenter BSc Geology
Director

Michael Kosowan P.Eng
Director

High Quality Technical Team



Daniel McCoy PhD Geology
Chief Geologist and Director

Former CEO of Keegan Resources (5M oz Esaase Deposit) and Chief Geo at Cayden Resources (El Barqueno) that was sold to Agnico Eagle

Ajeet Milliard PhD Geology
Senior Geologist

Dissertation on Carlin-type and sediment hosted gold deposits with over 10 years in exploration, formerly at Newmont Corporation

Mark Coolbaugh PhD Geology
Geoscientist

Over 40 years of exploration and research experience, including hard rock metal exploration, and mining geothermal exploration and research in the USA, Asia, Europe and South and Central America

Luke Schranz MS Geology
Senior Project Geologist

Over 5 years of exploration and underground production experience working in the Great Basin with Hecla Mining and Klondex Mines as well as in Alaska.

James Slayton
Project Manager

Over 35 years in gold and mineral exploration with extensive experience in the Great Basin

Former Employers of the Technical Team



Four Large Scale Premier Precious Metals Projects in Nevada



Hot Springs Range Project (HSRP)

- Analogue to Turquoise Ridge (7 Moz)
- Same structural setting as the Getchell Trend (40 Moz) – 10 km to north
- Gold system confirmed on surface never been drilled

Weepah

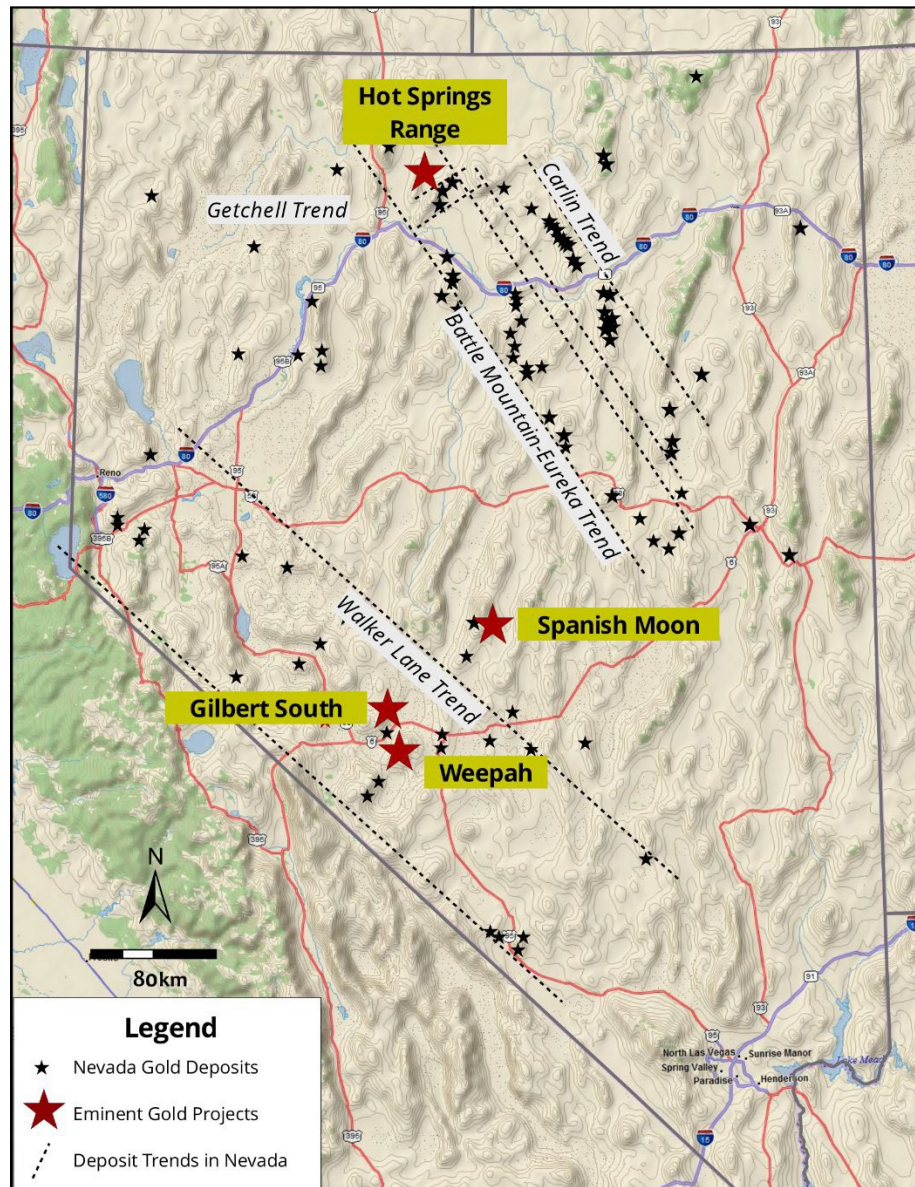
- Located within the prolific Walker Lane Trend (80 Moz Au)
- Opportunity to expand mineralized system by 2 km from open pit

Gilbert South

- High grade epithermal vein deposit
- Opportunity to discover bonanza grade Au veins at depth

Spanish Moon

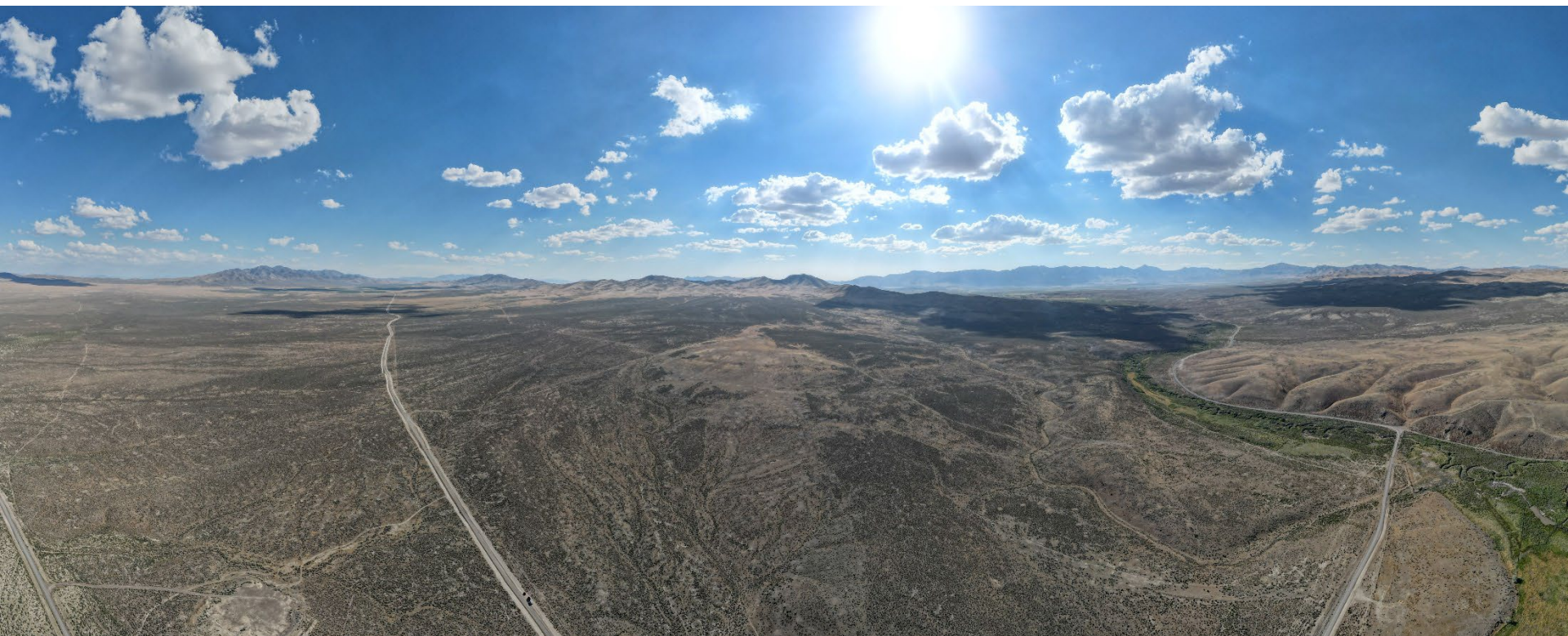
- Analogue to Round Mountain (23 Moz)
- Property consolidated for first time
- Multiple precious metals targets



Hot Springs Range Project (HSRP) – World Class Potential



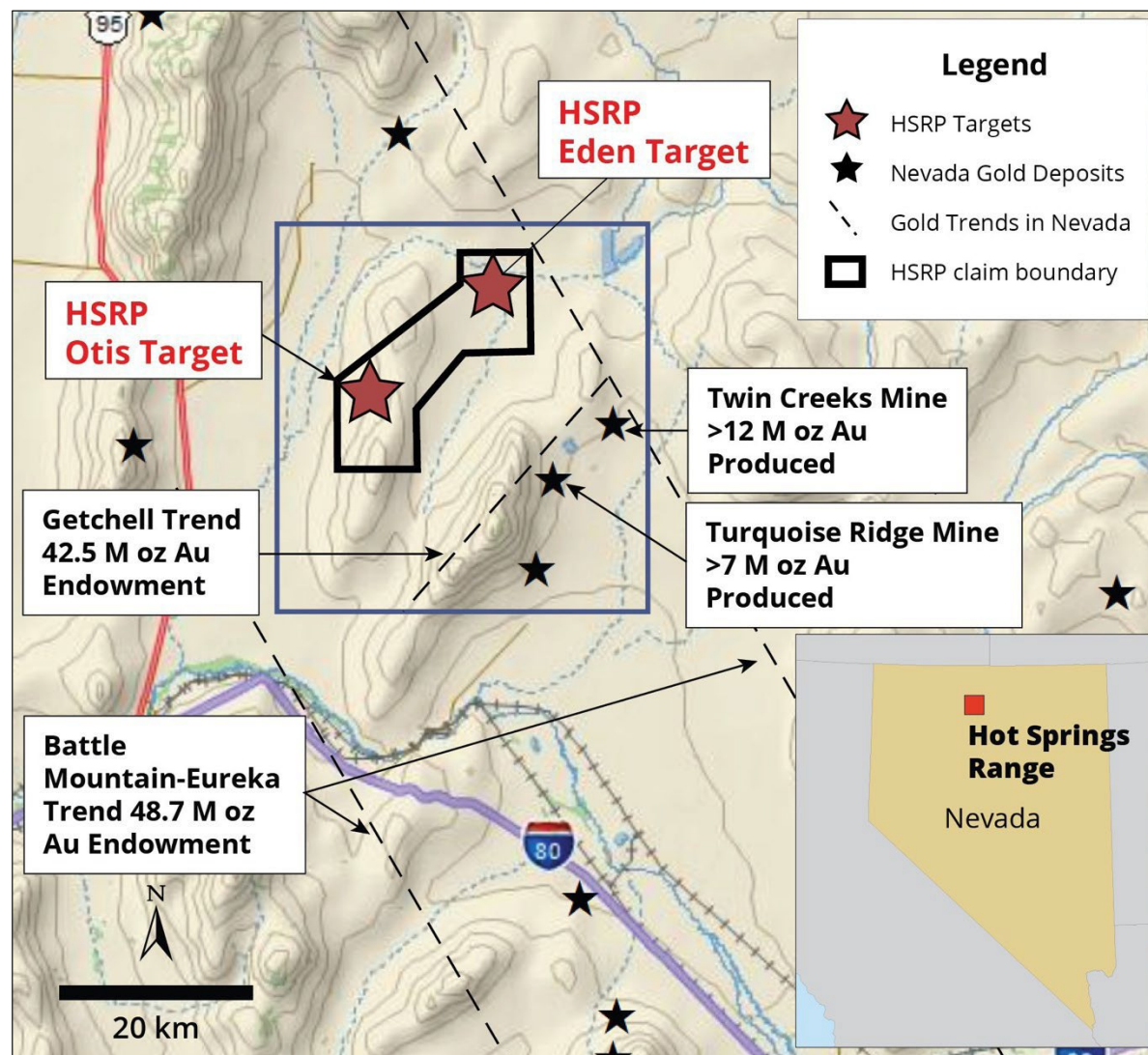
- Direct Analogue to the 40mm oz Getchell Trend
- 15km Away from Getchell Trend
- Never Previously Explored
- Two High Priority Targets – Otis & Eden



HSRP – Direct Analogue to 40mm oz Getchell Trend



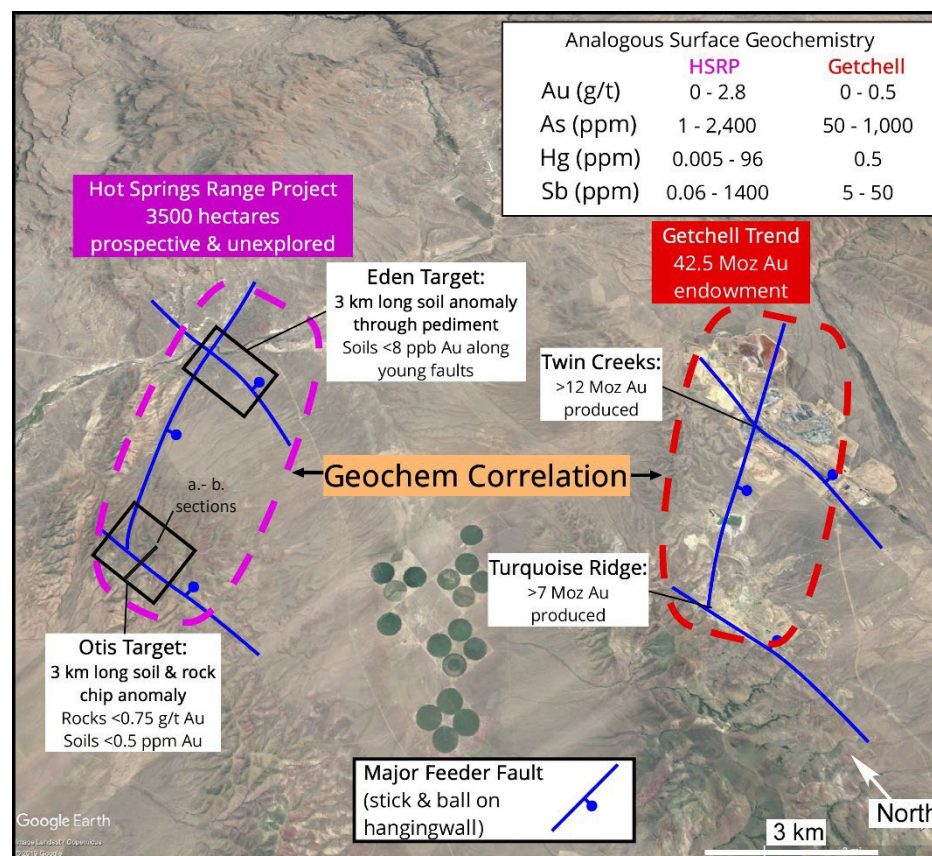
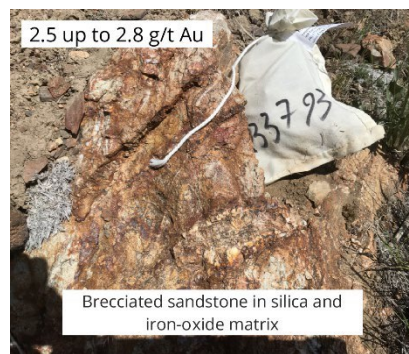
- 3,500-hectare land position – ***never previously explored!***
- Two high priority targets:** Otis & Eden
- Highly anomalous gold in surface rocks and in soils reveals hidden targets
- CSAMT confirms existence of conceptual targets



Hot Springs Range Project – Getchell Surface Correlation



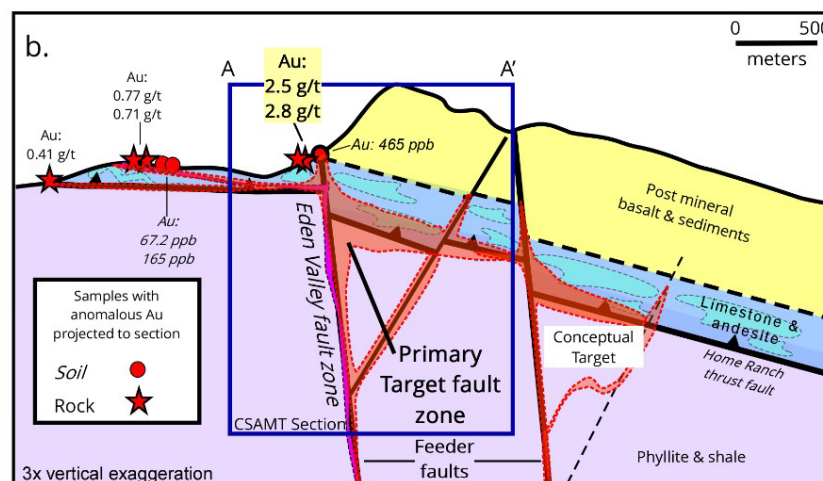
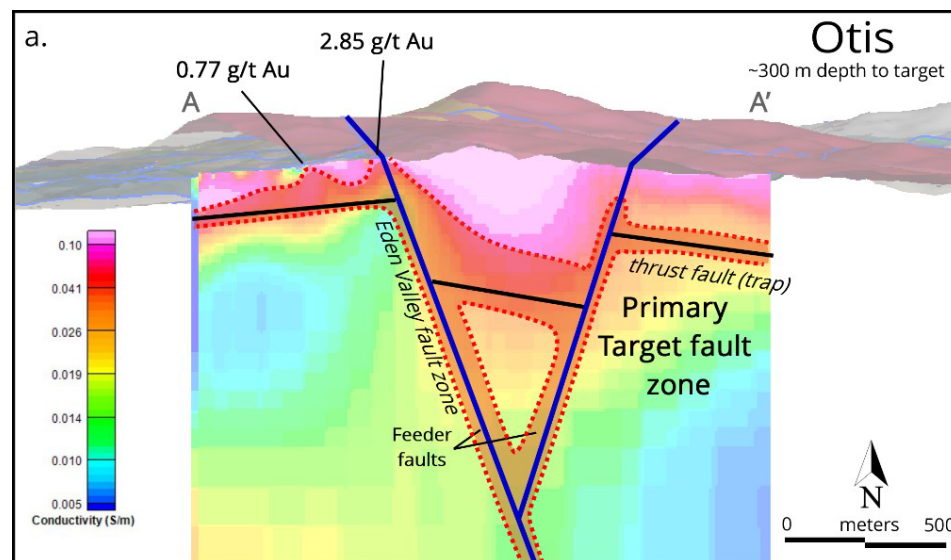
- Mapping confirmed the existence of:
 - Structural framework
 - Vertical feeder structures intersecting a shallowly dipping thrust fault; similar geometry as at the Getchell Trend
 - Ideal host rocks
 - Limestones & andesites
- Strong geochemical correlation between surface samples from Getchell and the HSRP



Hot Springs Range Project – CSAMT Interpretation



- CSAMT results confirm concept:
 - Structural framework
 - Vertical feeder structures intersecting a shallowly dipping thrust fault
- CSAMT combined with soil and rock results near imaged fault intersections confirms the existence of a gold bearing system at depth





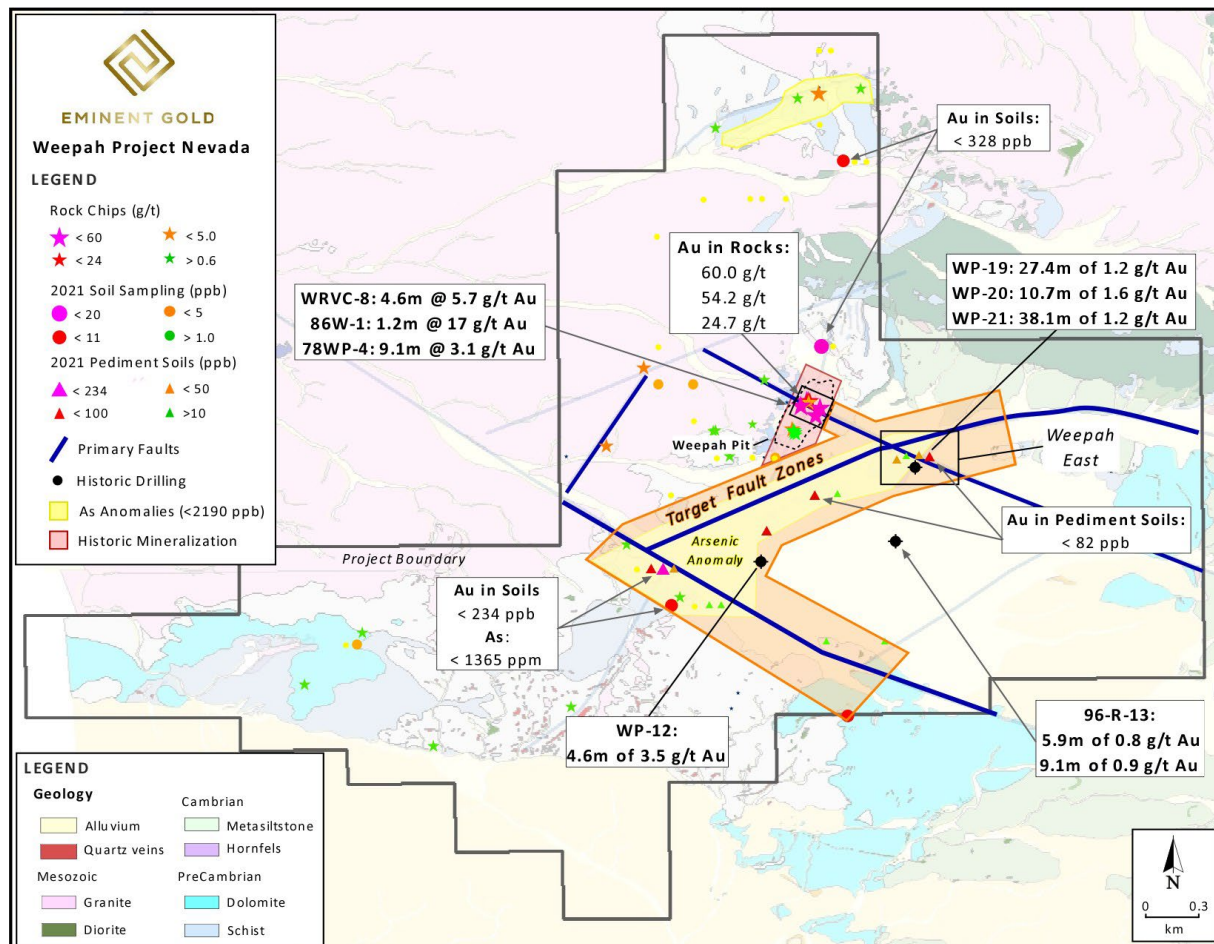
- **Parallel trend to Getchell**
- **Comparative geochemistry with higher Gold and Arsenic values on and around structures than Getchell**
- **Geophysics indicates analogues structures to the deposits that are hosted on Getchell Trend**
- **Drilling Planned in H1 2023**

Weepah - Opportunity to Expand High-Grade Gold Mineralization

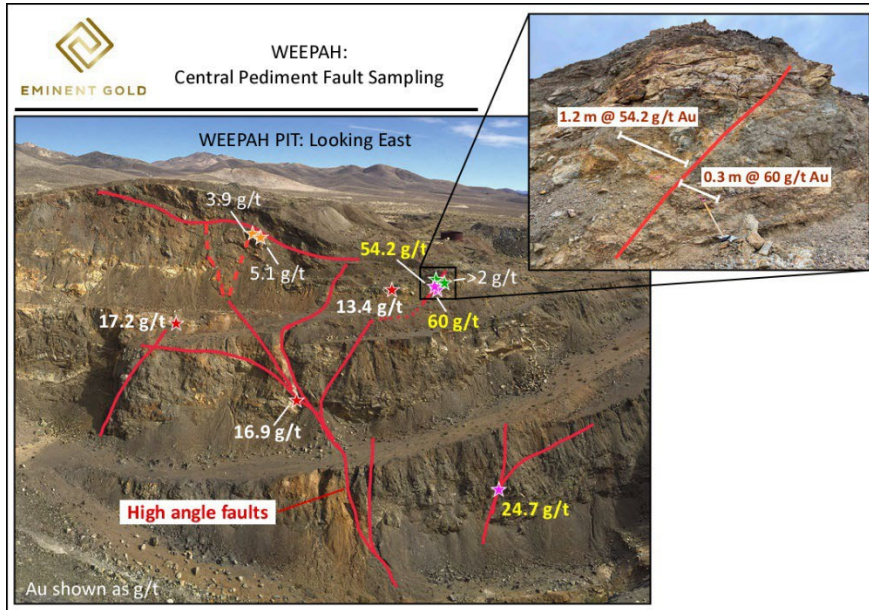


Highlights

- Historical Production of 117,000 oz Au
- Historic drilling included numerous intercepts over **2 g/t Au**
- Newly identified fault zones form numerous, untested targets
- Gold **<60 g/t** strengthens hypothesis that mineralization may be controlled by target fault zones

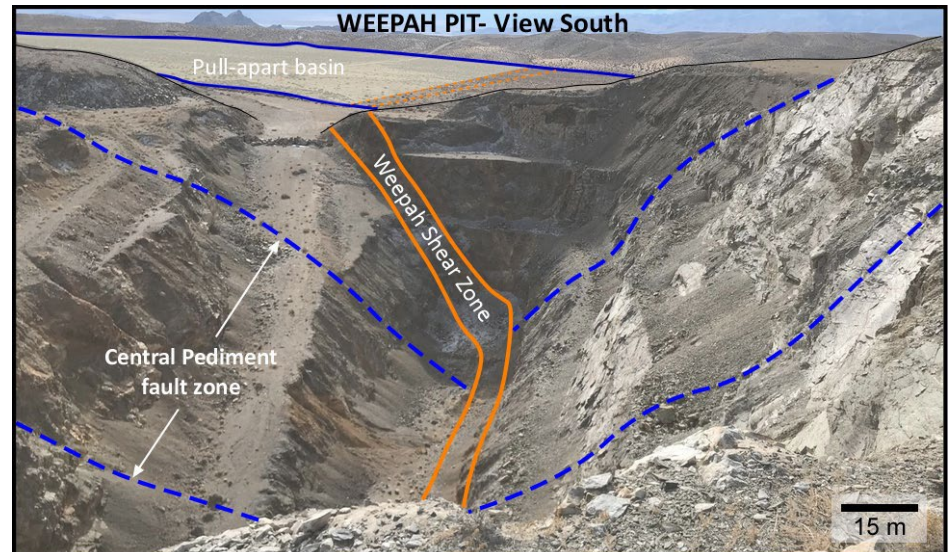


Weepah – New Perspective in Historical Open Pit



- Highest gold in rock grades occur at the intersection of Central Pediment fault with the historic Weepah Pit:
5 g/t < 60 g/t Au
- Strongest historic drill intercepts occur along this intersection: **<17 g/t Au**

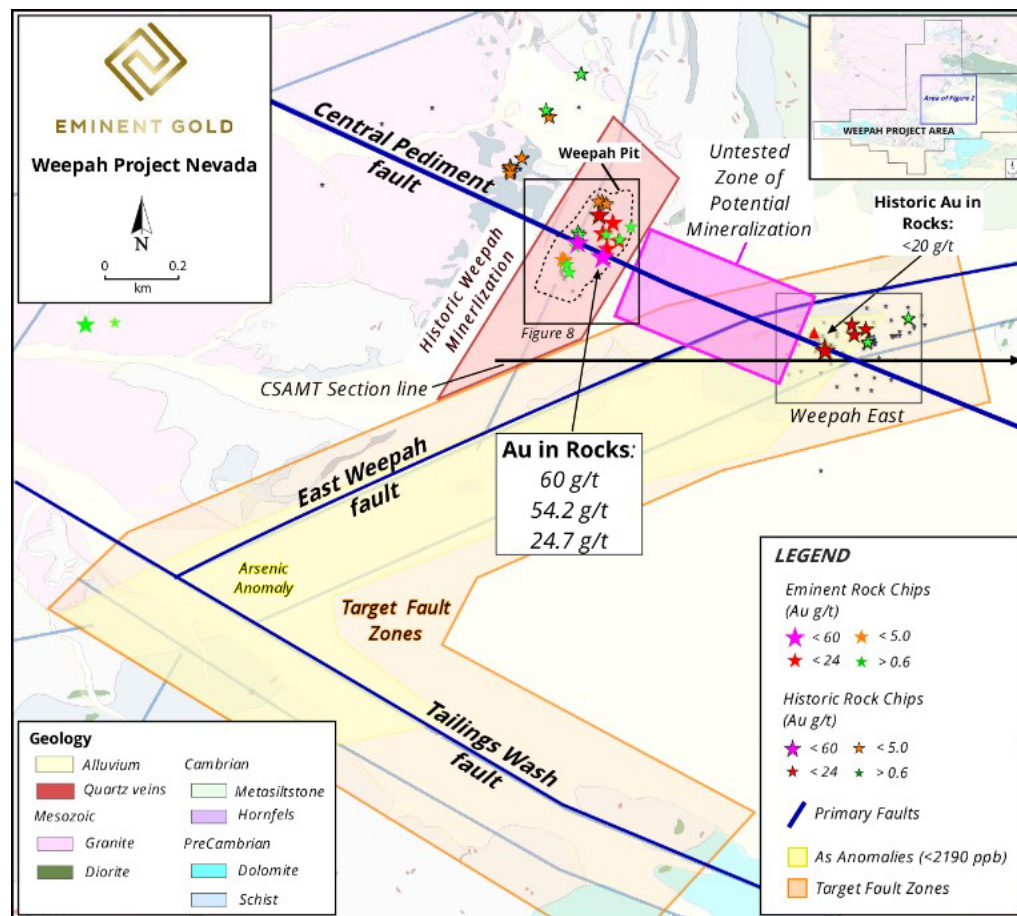
Historical open pit with view of Weepah shear zone and intersection of newly identified Central Pediment fault



Weepah – Room for Considerable Expansion



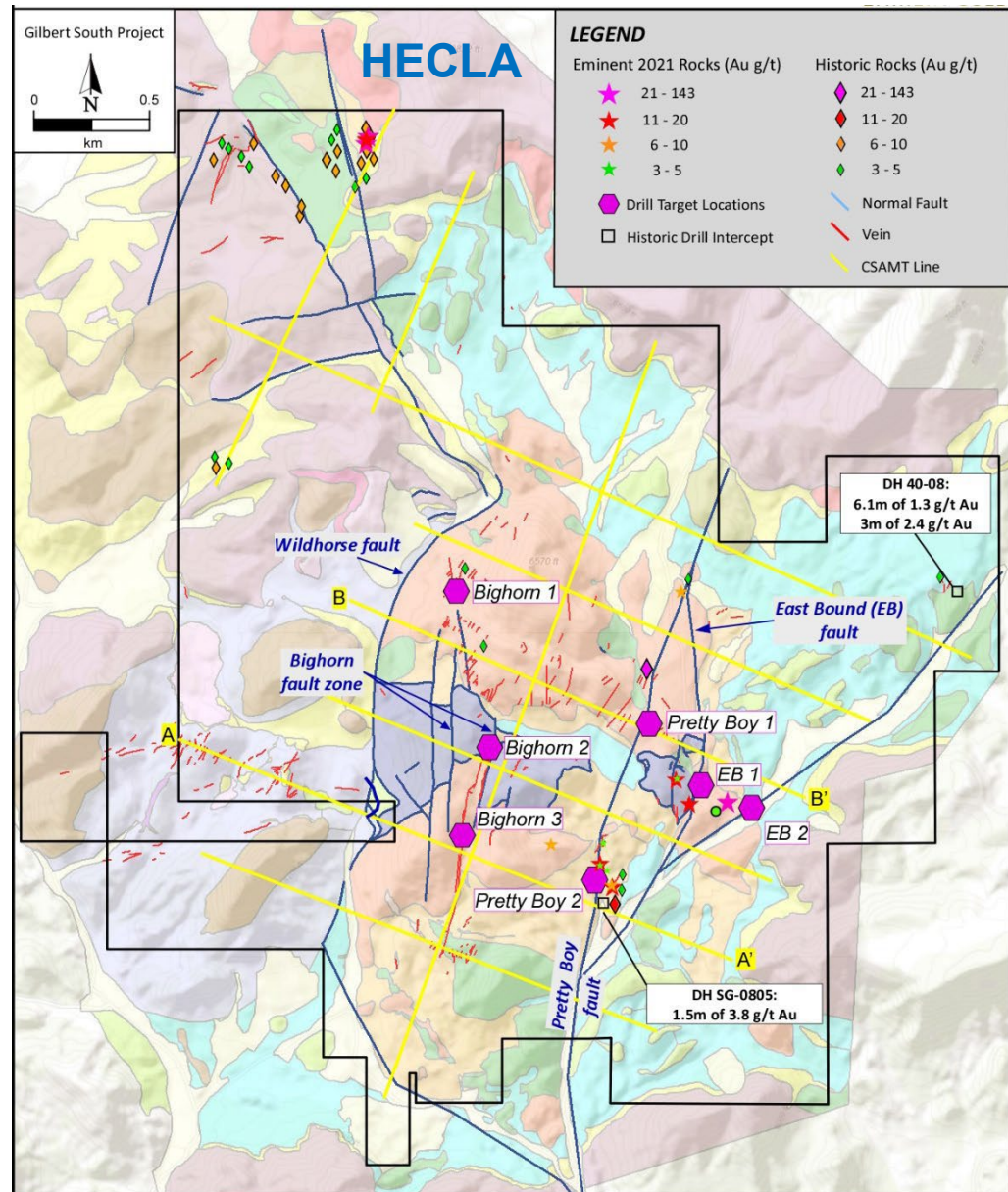
- Central Pediment fault could link Au mineralization at Weepah Pit to known mineralization at Weepah East (<20 g/t Au in rocks)
- Soil survey results at intersection of Tailings Wash and East Weepah fault zone, are the best results on the property –
<234 ppm Au, >1300 ppm As
- East Weepah fault may link mineralization at Weepah East deposit to intersection with the Tailings Wash fault



Gilbert South – Prolific Gold with Abundant Opportunity



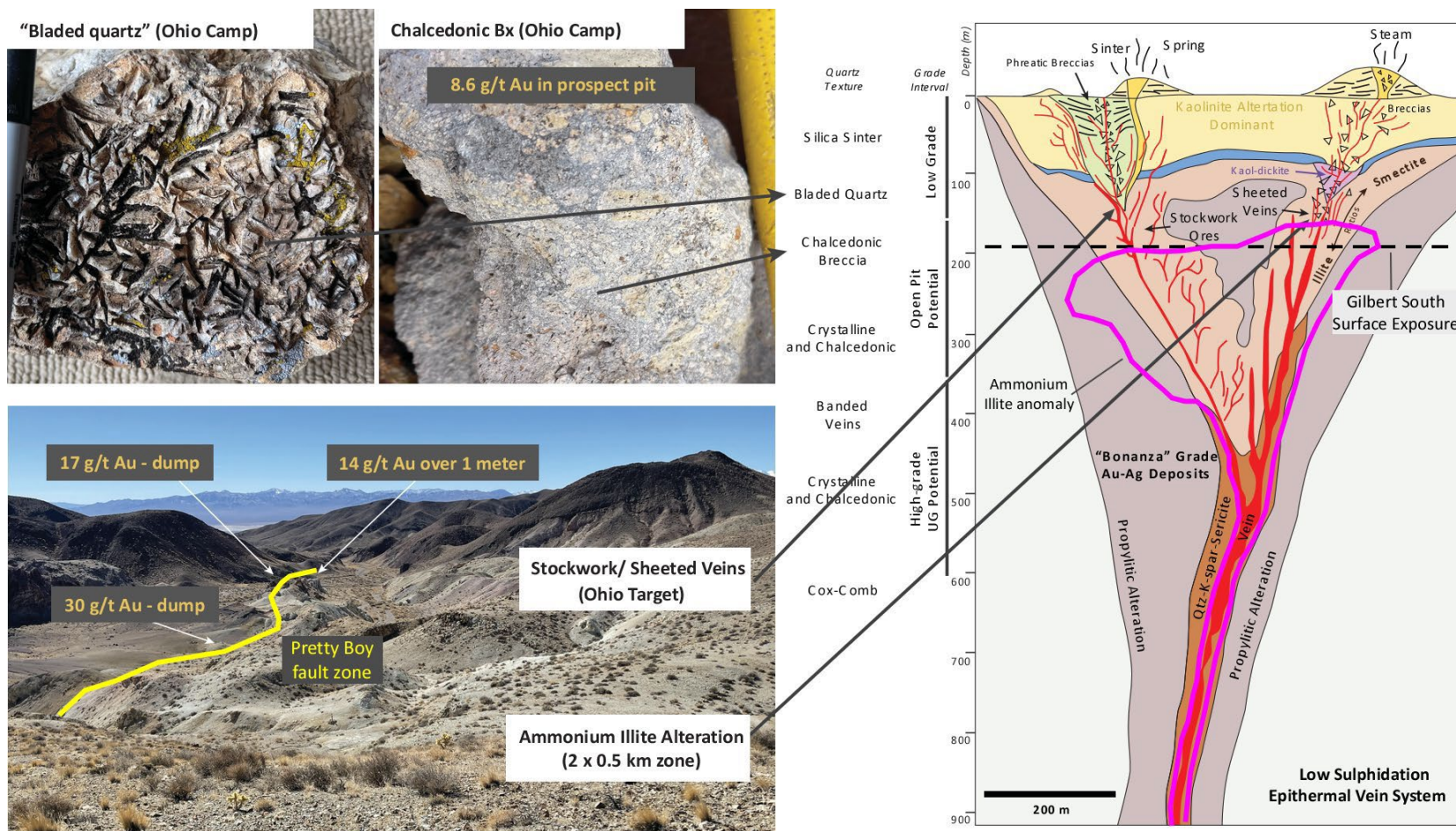
- Surface Rock Chip samples <31 g/t gold
- Little historic or modern exploration much beyond the near surface
- Several drill intercepts over 2.0 g/t – Very limited historic drilling
- Strongly gold mineralized veins expected to be discovered beneath the surface
- Identified **three** primary highly prospective drill targets:
 - I. Pretty Boy
 - II. EB
 - III. Bighorn



Gilbert South – Ideal Conditions for Bonanza Vein Discovery



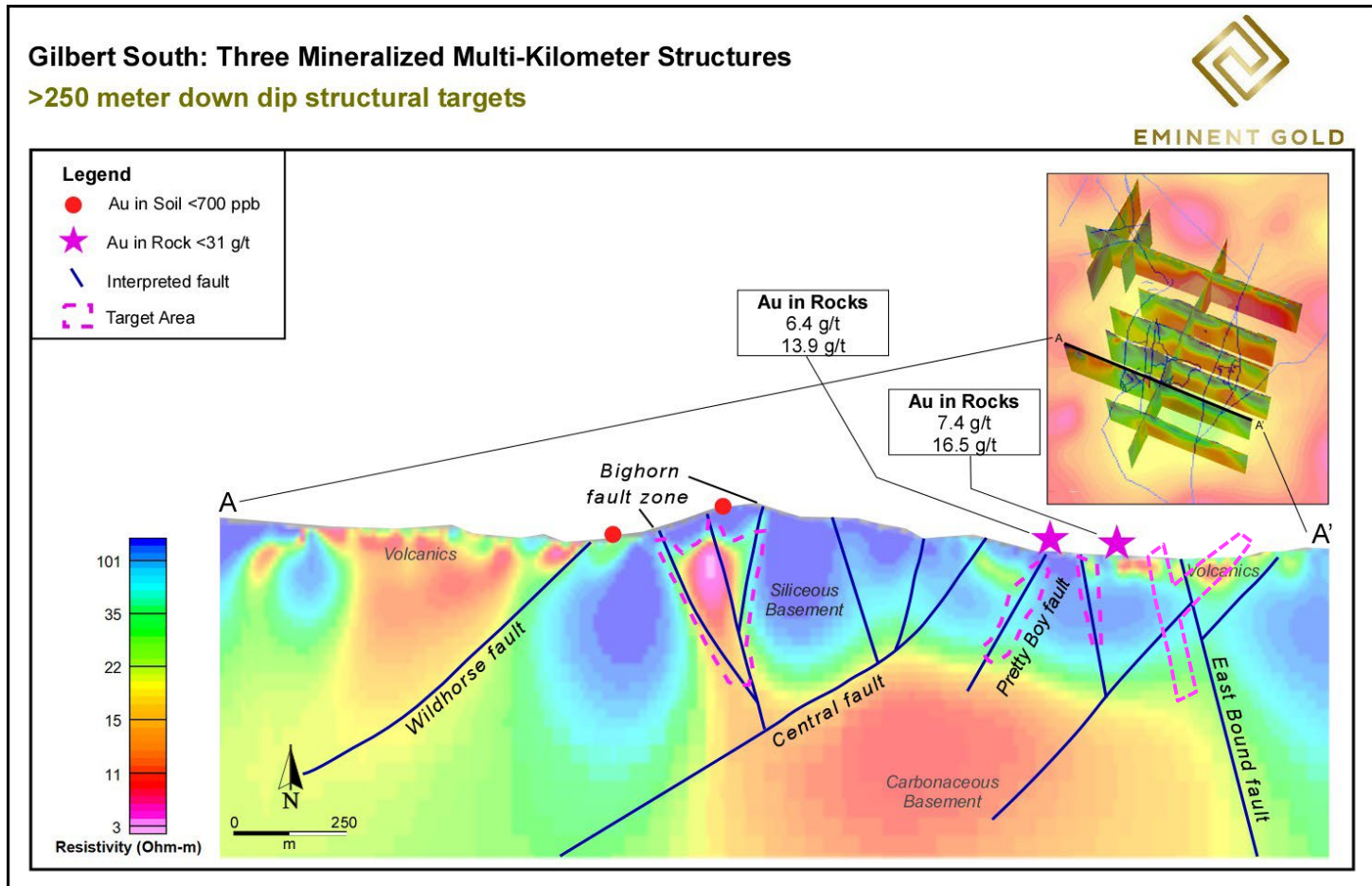
- Surface alteration and veining indicates exposures are shallow-level in a low sulfidation epithermal vein system
- Bonanza Grade gold mineralization would be expected just beneath the surface at Gilbert South



Gilbert South – High Grade Epithermal Vein Sets at Surface & Deep-Feeder Structures at Depth



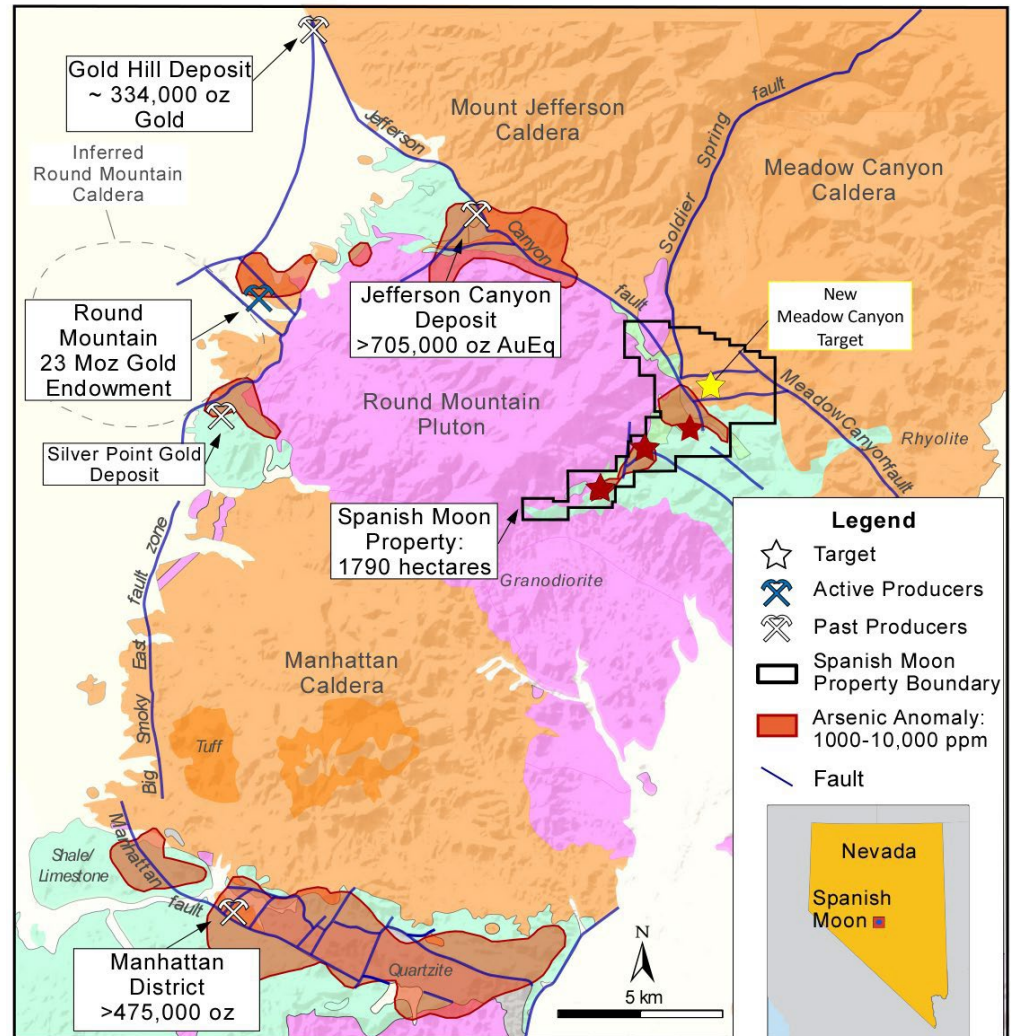
- Geophysics identifies multiple, deep feeder- structures.
- Feeder-structures correspond to mapped structures (i.e. Bighorn, Pretty Boy and EB) surface geochemistry and ammonium anomaly (**2 km long**).
- Target structures are each >2.5 km long & >250 m down dip potential



Spanish Moon – Analogue to 23mm oz Round Mountain



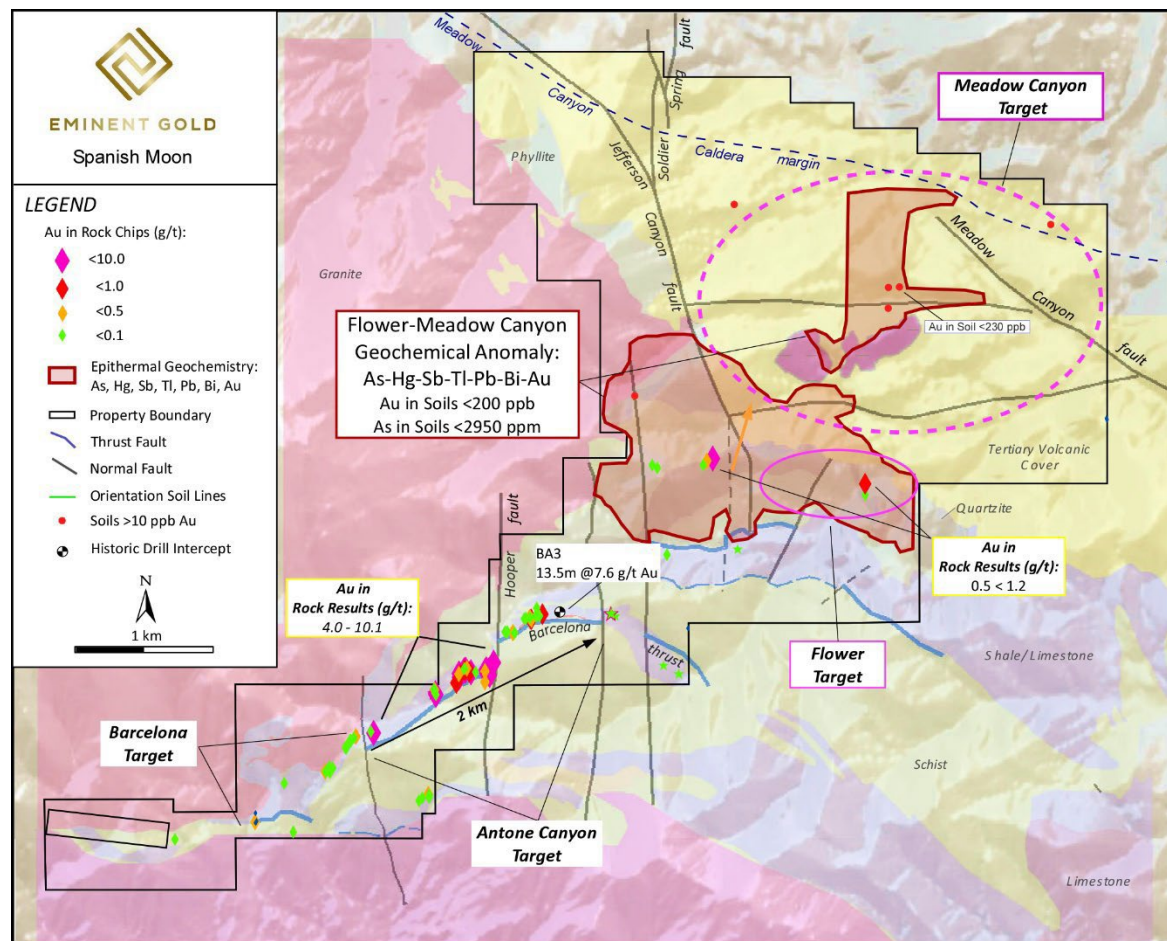
- Eminent first to consolidate and conduct exploration across Spanish Moon District
- Multiple high-grade gold and silver targets expanded by over a kilometer
- Historically mined for silver with grades up to 780 g/t – Recent rocks up to 8500 g/t
- Newly identified Meadow Canyon Target concept – direct geologic analog to Round Mountain and other gold deposits in the region



Spanish Moon – 6.4 km Corridor of Surface Mineralization

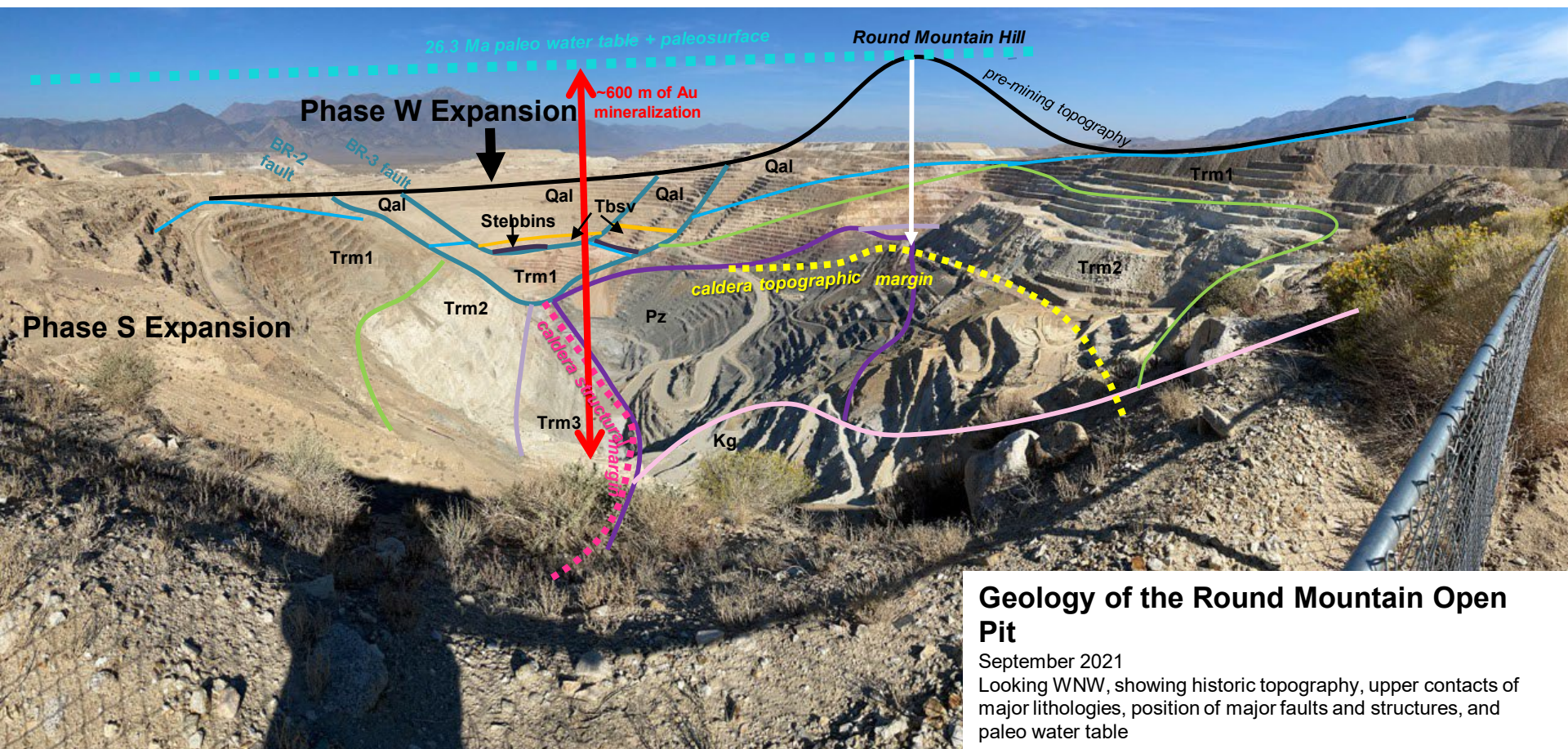


- Completion of first systematic metal exploration across the entire District
- Three metal bearing systems identified:
 - Antone Canyon
 - Flower-Meadow Canyon
 - Barcelona
- Barcelona (Ag) and Antone Canyon (Au) each strike >2 km
- Flower-Meadow Canyon conceptual target: Elevated pathfinder geochemistry for epithermal mineralization





Round Mountain Geology – Big picture

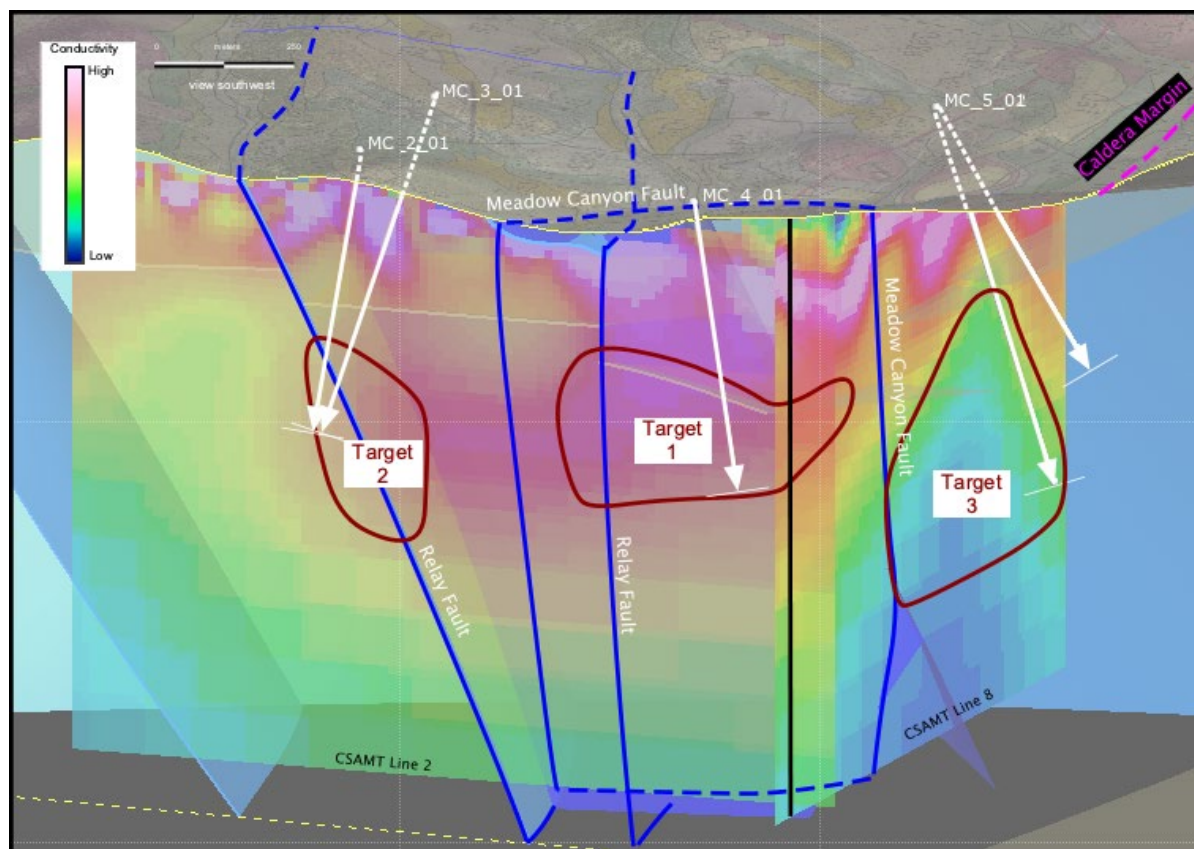


Geology of the Round Mountain Open Pit

September 2021

Looking WNW, showing historic topography, upper contacts of major lithologies, position of major faults and structures, and paleo water table

Meadow Canyon – CSAMT Interpretation

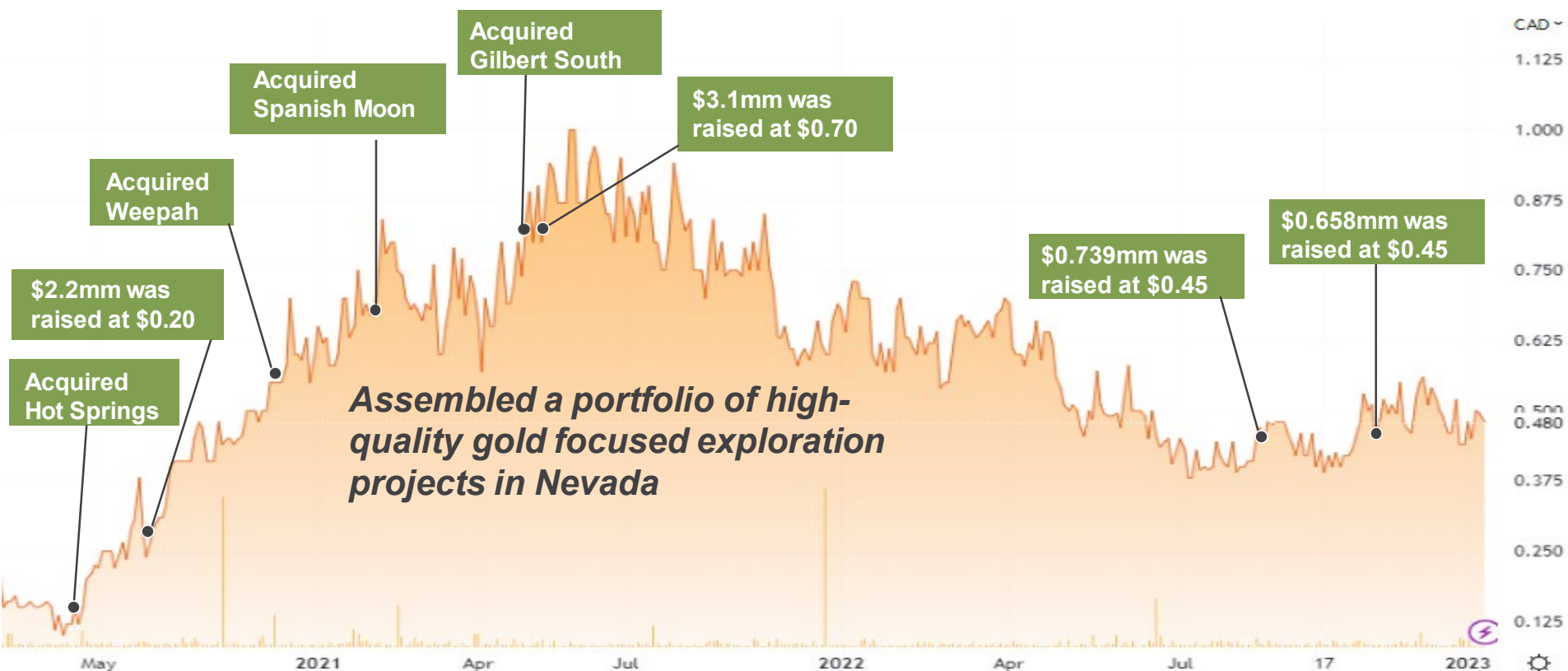
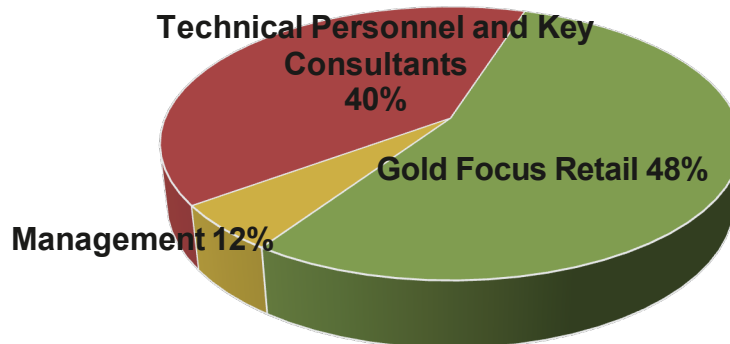


- CSAMT results confirm concept:
 - Feeder fault intersections within conductivity anomaly is a Round Mountain analog target for a disseminated gold system (Target 1 & 2)
 - Resistive anomaly along the caldera fault is a Gold Hill / Jefferson Canyon vein-hosted gold system (Target 3)

Capital Structure, Ownership, and Share Performance



Common Shares	44,927,182
Options	3,800,000
Warrants	3,104,444
Fully Diluted	51,831,626



An Exciting Year of Gold Exploration and Drilling in 2023



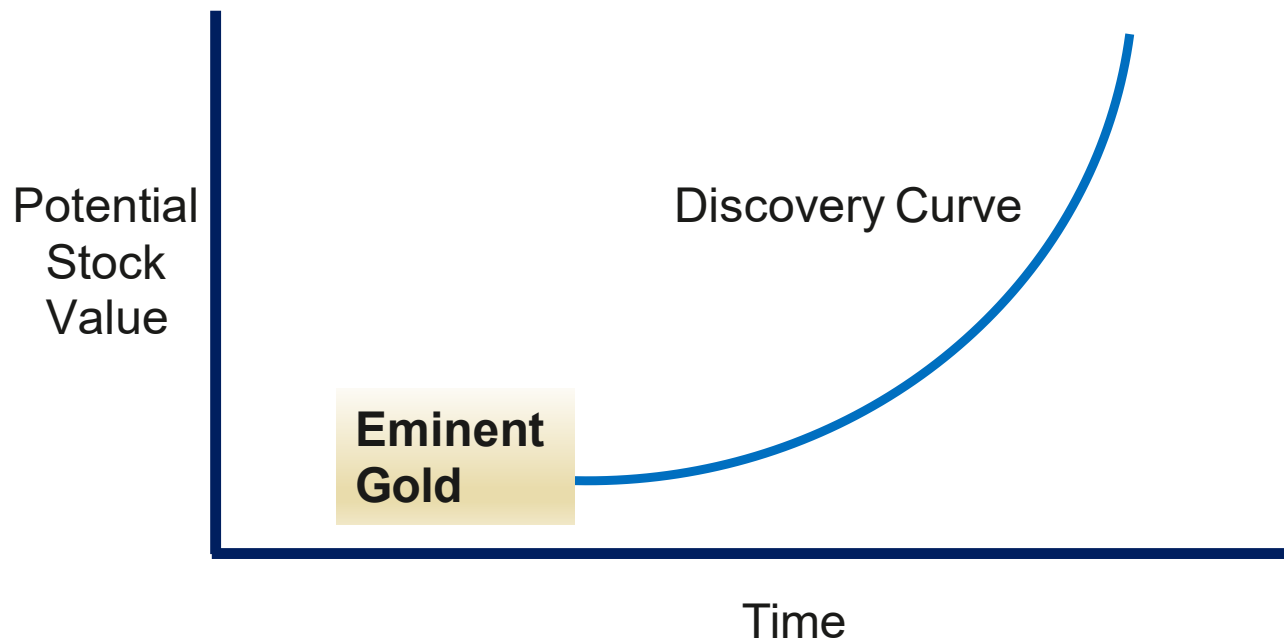
- ✓ 4 drill ready Gold projects in Nevada to be tested consecutively over 18 months
- ✓ New concepts with analogues to world class Gold mines
- ✓ Drilling anticipated in first half of 2023



Why Eminent?



- ✓ Proven exploration team with multiple discovery successes
- ✓ Number one address for gold endowment and infrastructure
- ✓ New concepts in Nevada





EMINENT GOLD

TSX.V – EMNT OTCQB – EMGDF

Burnaby, BC, Canada 1.312.539.0843

www.eminentgoldcorp.com