



EMINENT GOLD

# Pursuing Major Gold Discoveries in the Great Basin

OCTOBER 2024

TSX.V - EMNT | OTCQB - EMGDF

**Eminent Gold** is a gold exploration company focused on creating shareholder value through the exploration for world-class gold deposits in Nevada. Its experienced team has a proven track record in discovering and monetizing significant gold deposits, bringing both expertise and fresh ideas to the Great Basin.

## Capital Structure

(as of October 16, 2024)

### Shares Issued & Outstanding

59,317,217

### Options Outstanding

1,950,000 @ \$0.25 exp. Sep 17, 2025  
100,000 @ \$0.45 exp. Oct 26, 2025  
950,000 @ \$0.75 exp. Mar 18, 2026  
150,000 @ \$0.79 exp. Jun 30, 2026  
150,000 @ \$0.95 exp. Nov 11, 2026  
500,000 @ \$0.32 exp. Apr 3, 2029

3,800,000

### Warrants Outstanding

1,642,222 @ \$0.75 exp. Jul 12, 2025  
1,462,222 @ \$0.75 exp. Sep 6, 2025  
2,016,600 @ \$0.50 exp. Jul 25, 2026  
1,931,250 @ \$0.50 exp. Sep 29, 2026  
4,936,862 @ \$0.55 exp. Aug 30, 2026  
4,404,423 @ \$0.55 exp. Oct 15, 2026

16,393,579

## Management

**Paul Sun**  
CEO, President  
**Daniel McCoy**  
Chief Geologist  
**Martin Bajic**  
CFO  
**Michael Bebek**  
Head of Communications

## Board of Directors

Paul Sun  
Daniel McCoy  
Ann Carpenter  
Michael Kosowan

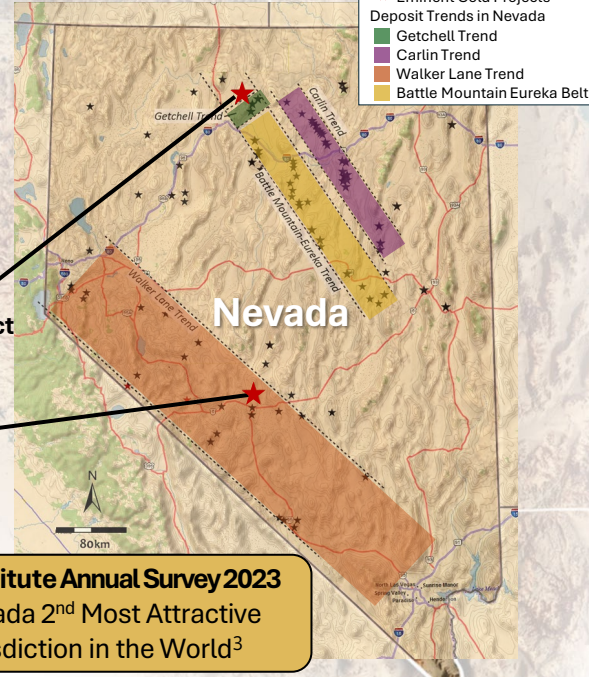


Legend

- ★ Nevada Gold Deposits
- ★ Eminent Gold Projects

Deposit Trends in Nevada

- Getchell Trend
- Carlin Trend
- Walker Lane Trend
- Battle Mountain Eureka Belt



### Flagship

#### Hot Springs Range Project

Option to earn 100%

#### Gilbert South

100% Ownership

US is the 3rd largest gold producer of which Nevada makes up 84%<sup>2</sup>

## A portfolio driven by new concepts for major discoveries uncovering hidden potential in Nevada

### Hot Springs Range Project - Flagship

A direct gold analog to major mines on the 42Moz **Getchell Trend**<sup>1</sup>, targeting previously unexplored yet highly prospective areas.

### Gilbert South

A new high-grade vein deposit opportunity **targeting the source** of previously mined high-grade veins using the epithermal vertical zonation model, located in the 80M oz **Walker Lane** gold trend<sup>6</sup>.

## Upcoming developments in 2024

Secure Drill Contract for Hot Springs Range Project

Commence Drilling Hot Springs Range Project

Acquire Drill Permits for Gilbert South

Expanding Exploration Portfolio

Appointment of Strategic Advisor

## Investor Contact

3849 Thurston Street, Burnaby, BC, Canada V5H 1H9  
Tel: +1 604-505-7751 Email: info@eminentgoldcorp.com

[www.eminentgoldcorp.com](http://www.eminentgoldcorp.com)

# Hot Springs Range Project

3,500 hectares | 3 high priority targets:

Otis, Sitka, Eden

Never Drilled: Exploring a New Major Gold Analog to the 42M oz Getchell Trend

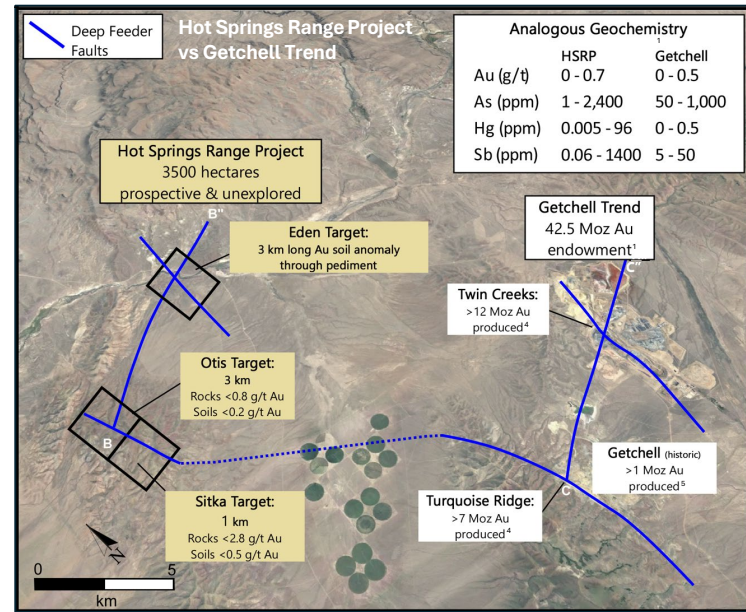
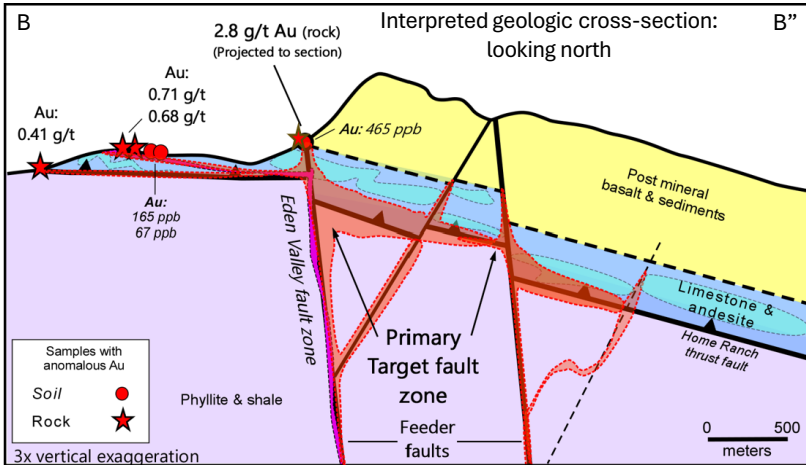
**Geophysics supports** the conceptual model (Crustal-scale subvertical faults intersecting shallowly dipping thrust faults) placing the receptive host rocks (limestone and andesite) atop the feeder faults to create the ideal fluid plumbing for a Carlin-type system.

## Analogous geochemistry to Getchell and Carlin systems

Anomalous geochemistry associated with this alteration consists of rock (up to 2.8 g/t Au) and soil samples (up to 465 ppb Au) which occur where the targeted host rocks and portions of the feeder faults daylight along strike.



**Otis (permitted for drilling)** lies on the same interpreted structure as Turquoise Ridge, 15 km away, separated by a post-mineral basin.



# Gilbert South

1,050 hectares | Three main targets outlined:

Pretty Boy, Bighorn, EB

Targeting the gold feeder structure of high-grade surface veins in the 80M oz Walker Lane trend

42 km west of Tonopah, Nevada on the 80M oz Au Walker Lane Trend<sup>6</sup>

**Initial Exploration Results:** Suggest that the system has eroded to the highest-grade gold zone and the low sulphidation epithermal gold system may exist just below the surface with potential for wider intercepts.

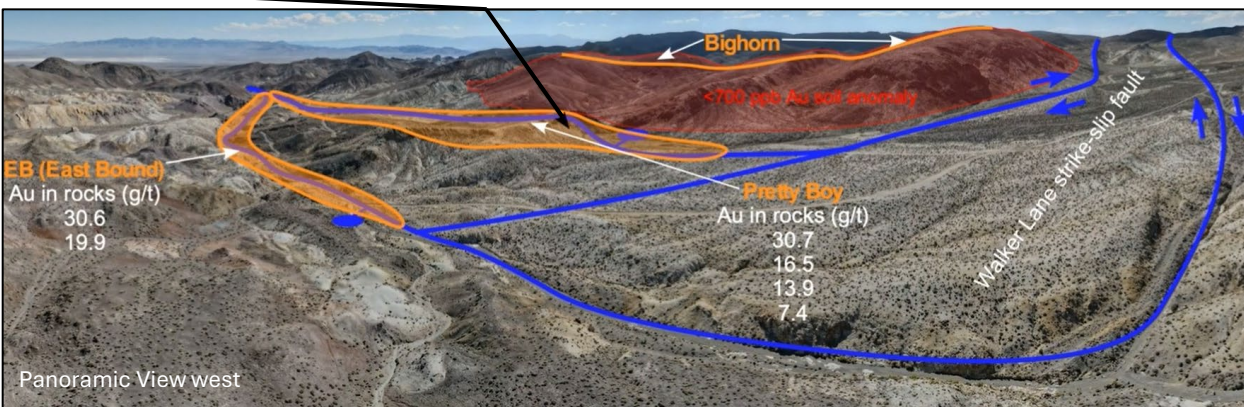
**Pretty Boy/EB Fault Zones Target Area:** Yielded numerous rock chip samples with Au values from 7.4 g/t to 30.7 g/t within crustiform quartz veins.

**A 0.75 km wide zone of both stockwork veins and through-going bladed calcite and quartz veins measuring 1-2 meters wide can be linked for 2.5 km along strike.**

**Bighorn Fault Zone Target Area:** Contains the best gold-in-soil anomaly (<700 ppb Au). Textures of the calcite vein, rhombohedral to banded, suggests the vein is the very shallowest exposure of an open fissure epithermal vein.



Pretty Boy Surface Outcrop Veining



Panoramic View west

## Historic Workings:

Extensive historic small-scale workings along the entire strike length, targeting heap leach potential, with no prior exploration for large-scale high-grade vein deposits.

**DRILLING EARLY 2025**

Source: 1. Muntean, 2018.. 2. USGS, 2023. *Gold in August 2023*. Mineral Industry Surveys.. 3. [www.fraserinstitute.org](http://www.fraserinstitute.org).. 4. Nevada Gold Mines. 3. 2021. *May 202 Investor Day Presentation*. Barrick Gold Corporation.. 5. J.J., Valliant, W.A., Altman, K.A., Geusebroek, P.A.. 6. [Energyandgold.com](http://Energyandgold.com). 2020. 8/24/2020

Disclaimer: This document has been prepared by Eminent Gold (the "Company") to introduce the Company's mineral exploration projects. Because it is a high-level summary presentation, the information contained herein cannot contain all the information that should be reviewed before making an investment decision. Summary of Cautionary Notes: 1. Forward looking statements are inherently uncertain. 2. Canadian mineral disclosure differs from U.S. mineral disclosure. 3. See full disclosure records for EminentGold at [www.sedar.com](http://www.sedar.com) Michael Dufresne, FGeo is the QP who assumes responsibility for the technical contents of this presentation.