



EMINENT GOLD TSXV - EMNT | OTCQB - EMGDF

PURSuing MAJOR GOLD DISCOVERIES IN THE GREAT BASIN | NEVADA



3 PROJECTS

Hot Springs Range
Gilbert South
Celts

3 MAJOR PROSPECTS

Drilling Getchell Trend Analogue (42 Moz gold¹)
High-Grade Feeder Vein Target - drilling early 2025
Direct Analogue to Silicon (4.2 Mozs gold, total resource⁸)

CAPITAL STRUCTURE

as of December 10, 2024

Management 13%

Technical Personal & Close Associates 40%

Issued & Outstanding

Options	3,800,000
Warrants	16,393,579
Fully Diluted	79,510,796

59,317,217

INVESTMENT HIGHLIGHTS

- All projects slated for drilling in 2025
- Catalyst-rich opportunities in robust gold market
- Disciplined and well-structured capital framework
- Currently drilling a direct analog to a major gold trend
- Experienced management with multiple past discoveries
- Large-scale gold discovery opportunities in premier jurisdiction

WARRANTS OUTSTANDING		
Expire	Price	Amount
Jul 12, 2025	\$0.75	1,642,222
Sep 6, 2025	\$0.75	1,462,222
Jul 25, 2026	\$0.50	2,016,600
Sep 29, 2026	\$0.50	1,931,250
Aug 30, 2026	\$0.55	4,936,862
Oct 15, 2026	\$0.55	4,404,423

OPTIONS OUTSTANDING		
Expire	Price	Amount
Sep 17, 2025	\$0.25	1,950,000
Oct 26, 2025	\$0.45	100,000
Mar 18, 2026	\$0.75	950,000
Jun 30, 2026	\$0.79	150,000
Nov 11, 2026	\$0.95	150,000
Apr 3, 2029	\$0.32	500,000

MANAGEMENT

Paul Sun | CEO, President
Daniel McCoy | Chief Geologist
Martin Bajic | CFO
Michael Bebek | Head of Communications

DIRECTORS

Paul Sun
Daniel McCoy
Ann Carpenter
Michael Kosowan

HOT SPRINGS RANGE PROJECT

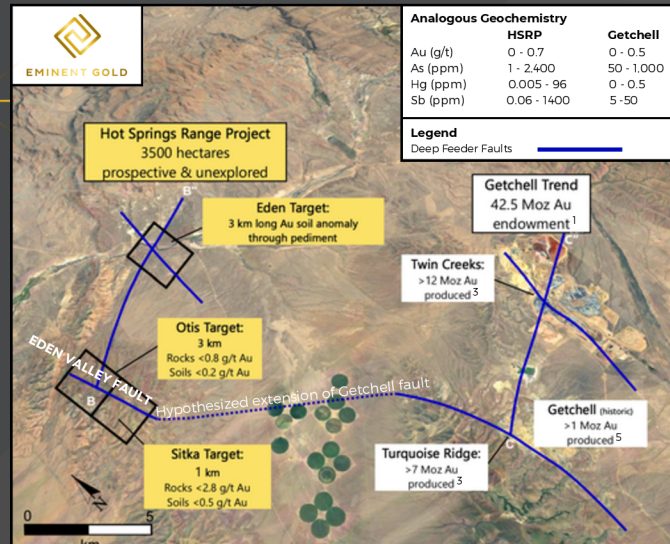
MAJOR GOLD ANALOGUE EXPLORATION OPPORTUNITY

Our objective is to replicate the 42.5 Moz Getchell Gold Trend¹ by finding multiple million-ounce deposits.

Project Highlights: ~15km northwest of Getchell Trend

- Never previously explored, hidden by post mineral faults
- Analogous geochemistry to Getchell Trend and Carlin systems
- Highly analogous geological framework
- Ideal host rocks
- Rock samples up to 2.8 g/t Au taken where structure surfaces
- Otis target on the same interpreted feeder fault as Turquoise Ridge (7 Moz Au Produce averaging 15.3 g/t Au³) ~15km away

CURRENTLY DRILLING



Geochemistry | Hot Springs Range vs. Getchell Trend

100% Ownership

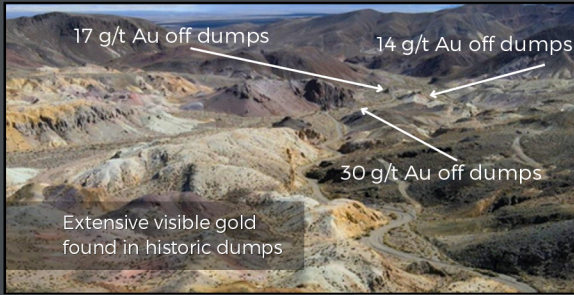
GILBERT SOUTH PROJECT

NEW HIGH-GRADE VEIN DEPOSIT OPPORTUNITY

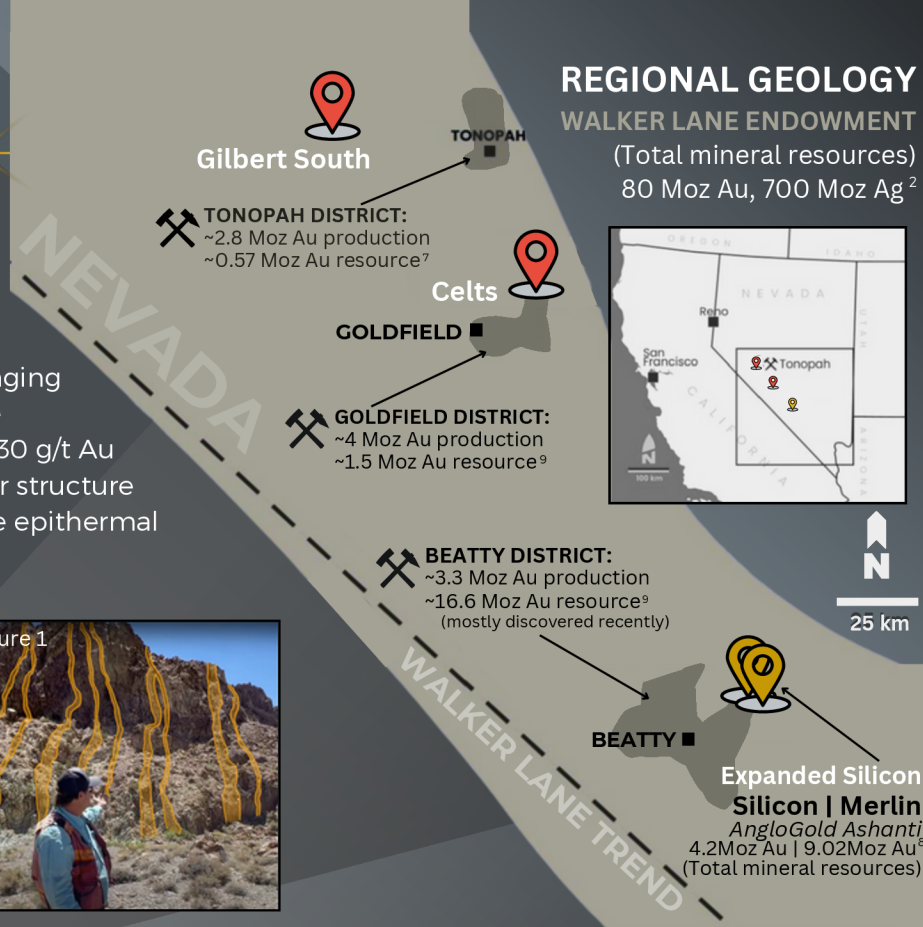
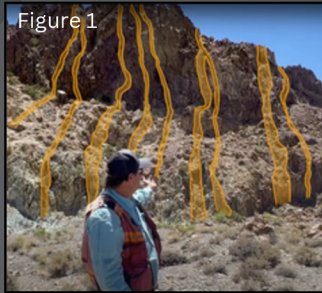
Our objective is to apply the epithermal vertical zonation model to target previously unexplored, high-grade feeder veins.

Project Highlights: On Walker Lane Trend

- A low sulphidation epithermal system
- Rock textures suggest system has eroded, bringing the main feeder structure closer to the surface
- Multiple samples taken from veins with up to 30 g/t Au
- Historic mining never explored for main feeder structure
- Superficial veins appear to be part of one large epithermal system over 2.5 km of strike length (figure 1)



Gilbert South | looking South



CELTS PROJECT | Recently Acquired - 100% Ownership May 2025

DIRECT GOLD ANALOGUE TO SILICON (4.2 Moz Gold | total mineral resource)⁸

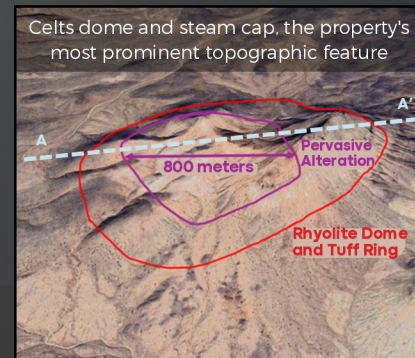
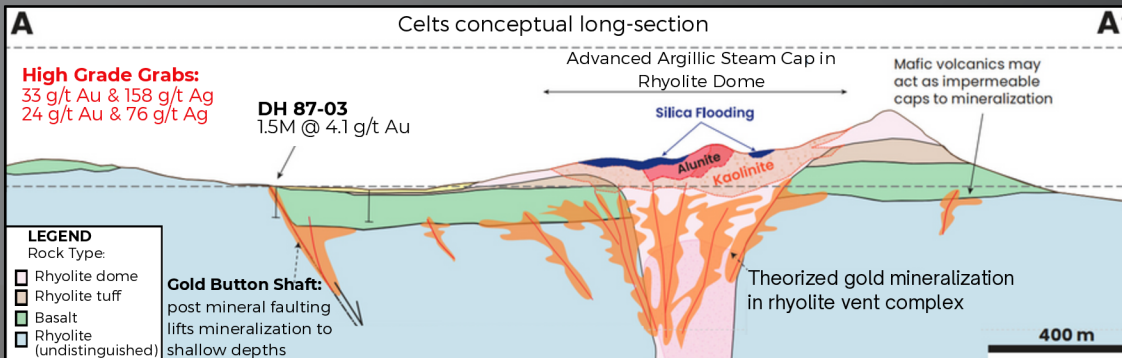
Our objective is to drill the untested boiling zone below the steam cap to confirm potential for a bulk mineable deposit, similar to Silicon.

Project Highlights: On Walker Lane Trend

- Identified by the team who identified Silicon, 100 km SE
- Rhyolite dome dated same age as the rhyolite at the Expanded Silicon Project (13.27 Moz Au total mineral resource⁸)
- Presence of peripheral gold veins supports the model that bulk mineable gold deposits could underlie the Celts steam cap
- Satellite and ground-based hyperspectral techniques, confirm alteration minerals in the steam cap at Celts identical to Silicon



Celts | view of rhyolite dome



1. Muntean, 2018. Carlin-Style Deposits in Nevada: Exploration Activity and Targeting Criteria. Abstract. PDAC Annual Meeting. 2. Energyandgold.com. 2020. 8/24/2020 3. Nevada Gold Mines. 2021. May 20. Investor Day Presentation. Barrick Gold Corporation 5. Lane, T., Harvey, T., Moritz, R., Samari, H., Breckenridge, L. 2021. Preliminary Economic Assessment NI 43-101 Technical Report Granite Creek Mine Project Humboldt County, Nevada, USA. Global Resource Engineering Ltd., November 8, 2021. 7. Barnaby-Rockwell. The Goldfield Mining District Nevada An Acid-Sulfate Bonanza Gold Deposit. October 2000. www.researchgate.net 8. https://reports.anglogoldashanti.com/23/wp-content/uploads/2024/04/AGA-RR23.pdf 9. Centerra Gold. (2022). Centerra Gold announces acquisition of the Goldfield district development project in Nevada. Retrieved from GlobeNewswire: https://www.globenewswire.com/news-release/2022/02/22/2389040/0/en/Centerra-Gold-Announces-Acquisition-of-the-Goldfield-District-Development-Project-in-Nevada.html



Contact us

Michael Bebek
Tel: +1 604 505 7751
michael@eminentgoldcorp.com
www.eminentgoldcorp.com

TSXV - EMNT | OTCQB - EM6DF