



EMINENT GOLD

**PURSUIING MAJOR GOLD DISCOVERIES
IN THE GREAT BASIN | NEVADA**

TSXV - EMNT | OTCQB - EMGDF

Investor Presentation - December 2024



DISCLAIMER

This document has been prepared by Eminent Gold (the “Company”) to introduce the Company’s mineral exploration projects. Because it is a high-level summary presentation, the information contained herein cannot contain all the information that should be reviewed before making an investment decision.

SUMMARY OF CAUTIONARY NOTES

Forward looking statements are inherently uncertain. Canadian mineral disclosure differs from U.S. mineral disclosure. See full disclosure records for Eminent Gold at www.sedar.com. Michael Dufresne, P. Geo is the QP who assumes responsibility for the technical contents of this presentation.

THREE NEVADA GOLD PROJECTS

UNLOCKING THE POTENTIAL FOR MAJOR DISCOVERIES

Our Goal is to make a world class gold discovery in Nevada aligned with the positive outlook for the price of gold.

We have a compelling pipeline of three unique, drill-ready gold exploration projects, which we plan to test consecutively over the next 12 months.

PROJECTS

- HOT SPRINGS RANGE Drilling the nearby ~50 M oz Au Getchell Trend¹ analogue
- GILBERT SOUTH High-grade feeder vein target - drilling early 2025
- CELTS Potential open-pit analogue to Silicon (4.2 Mozs gold, total resource⁸) - drilling 2025

Fraser Institute Annual Survey 2023

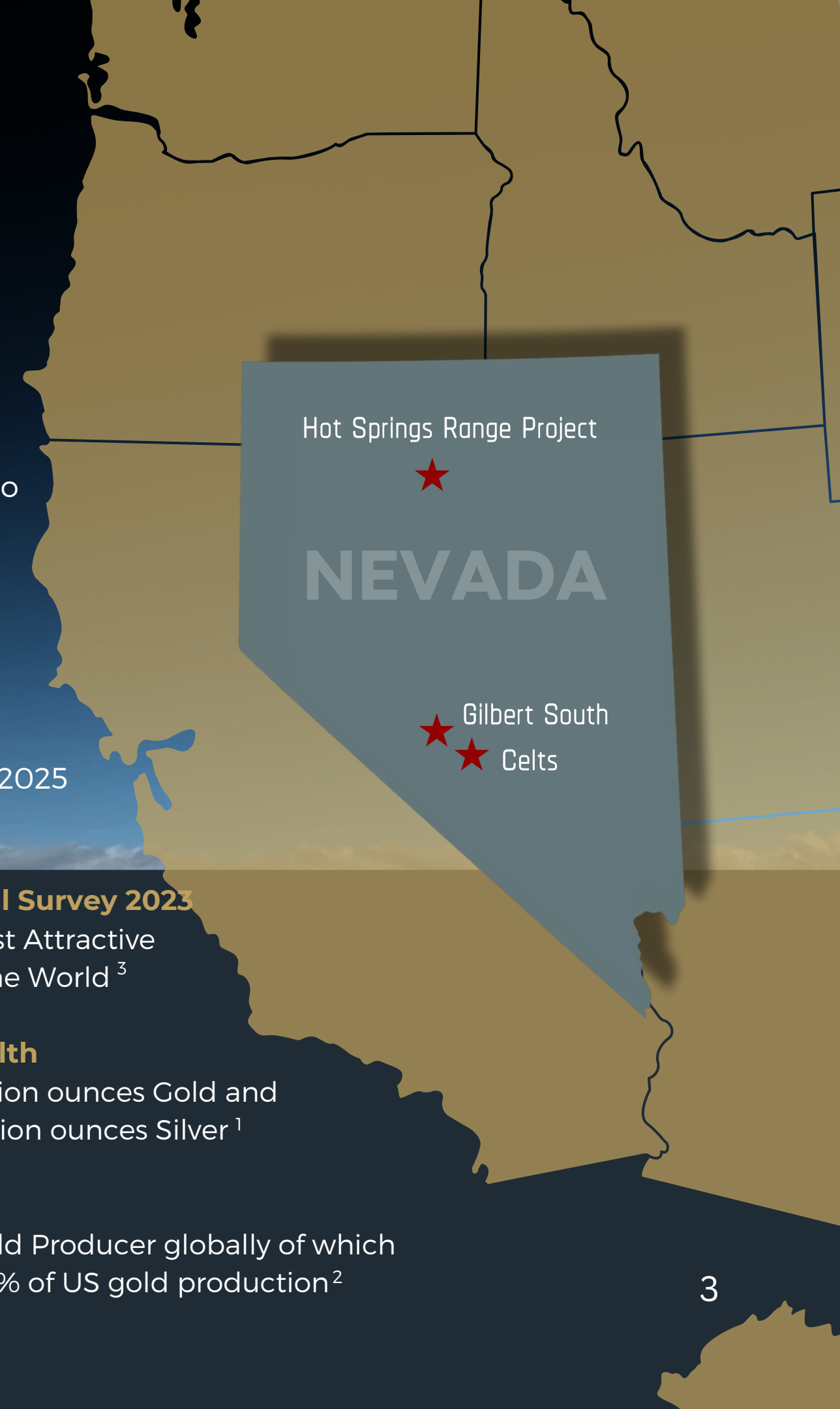
Nevada ranked 2nd Most Attractive Mining Jurisdiction in the World³

Nevada's Mineral Wealth

Endowment of 270 million ounces Gold and Endowment of 700 million ounces Silver¹

US Gold Production

US is the 3rd Largest Gold Producer globally of which Nevada accounts for 84% of US gold production²



EXPERIENCED MANAGEMENT TEAM

Strong multidisciplinary team with a proven track record of past successes



Paul Sun

P.Eng, MBA, CFA

CEO, President & Director

Fifteen year capital markets and banking professional, mining engineer, and over twenty years in finance and operations



Daniel McCoy

PhD

Chief Geologist & Director

Former CEO of Keegan Resources (5M oz Esaase Deposit) and Chief Geo at Cayden Resources (El Barqueno), which was sold to Agnico Eagle



Martin Bajic

CPA, CA

CFO

Over a decade of experience serving as a director, CFO or consultant of publicly traded companies



Michael Bebek

Head of Communications

Former IA at Haywood Securities Inc. with over eighteen years experience in the resource sector

BOARD OF DIRECTORS

Paul Sun P.Eng, MBA, CFA | **Daniel McCoy** PhD | **Ann Carpenter** BSc Geology | **Michael Kosowan** P.Eng

Former Employers of our Technical Team



KEEGAN
RESOURCES INC.



TECHNICAL TEAM



Daniel McCoy

PhD Economical Geology

Chief Geologist & Director

Former President and CEO of Keegan Resources, which discovered the **5M oz Esaase Deposit** and former Chief Geologist at Cayden Resources, which made a modern discovery of El Barqueno, resulting in acquisition by Agnico-Eagle.



Jim Slayton

Project Manager

Former project manager at Esaase and El Barqueno. A Nevada native having decades of experience with Noranda and other companies exploring in the Great Basin.



HOT SPRINGS RANGE PROJECT

NEW MAJOR GOLD ANALOGUE EXPLORATION OPPORTUNITY

Our objective is to replicate and extend the ~50 Moz Getchell Gold Trend¹ by finding multi million-ounce deposits

Photo of Otis | core drill site

TSXV - EMNT | OTCQB - EMGDF

HOT SPRINGS RANGE PROJECT

MAJOR GOLD ANALOGUE TO THE 50 MILLION OUNCE GETCHELL TREND

TARGETS OTIS | SITKA | EDEN

3 PRIORITY TARGETS

Targeting previously unexplored yet highly prospective areas

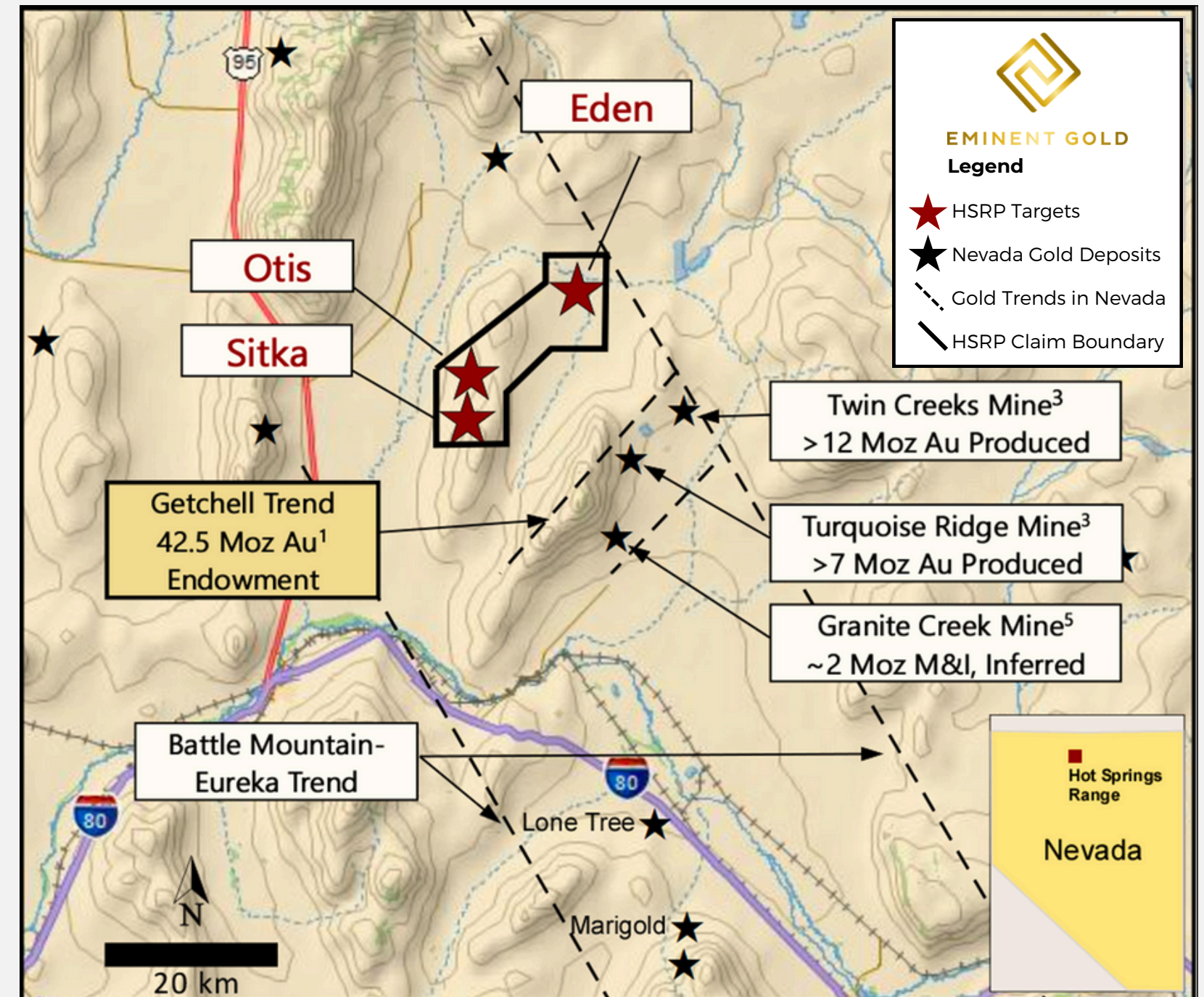
GEOCHEMISTRY

Comparable gold and pathfinder elements to the Getchell trend

GEOPHYSICS

Highly analogous geological framework supported by geophysics

OTIS | DRILLING COMMENCED



STRONG SURFACE CORRELATION

HOT SPRINGS RANGE PROJECT VS GETCHELL MINING TREND

Analogous geochemistry to Getchell and Carlin systems

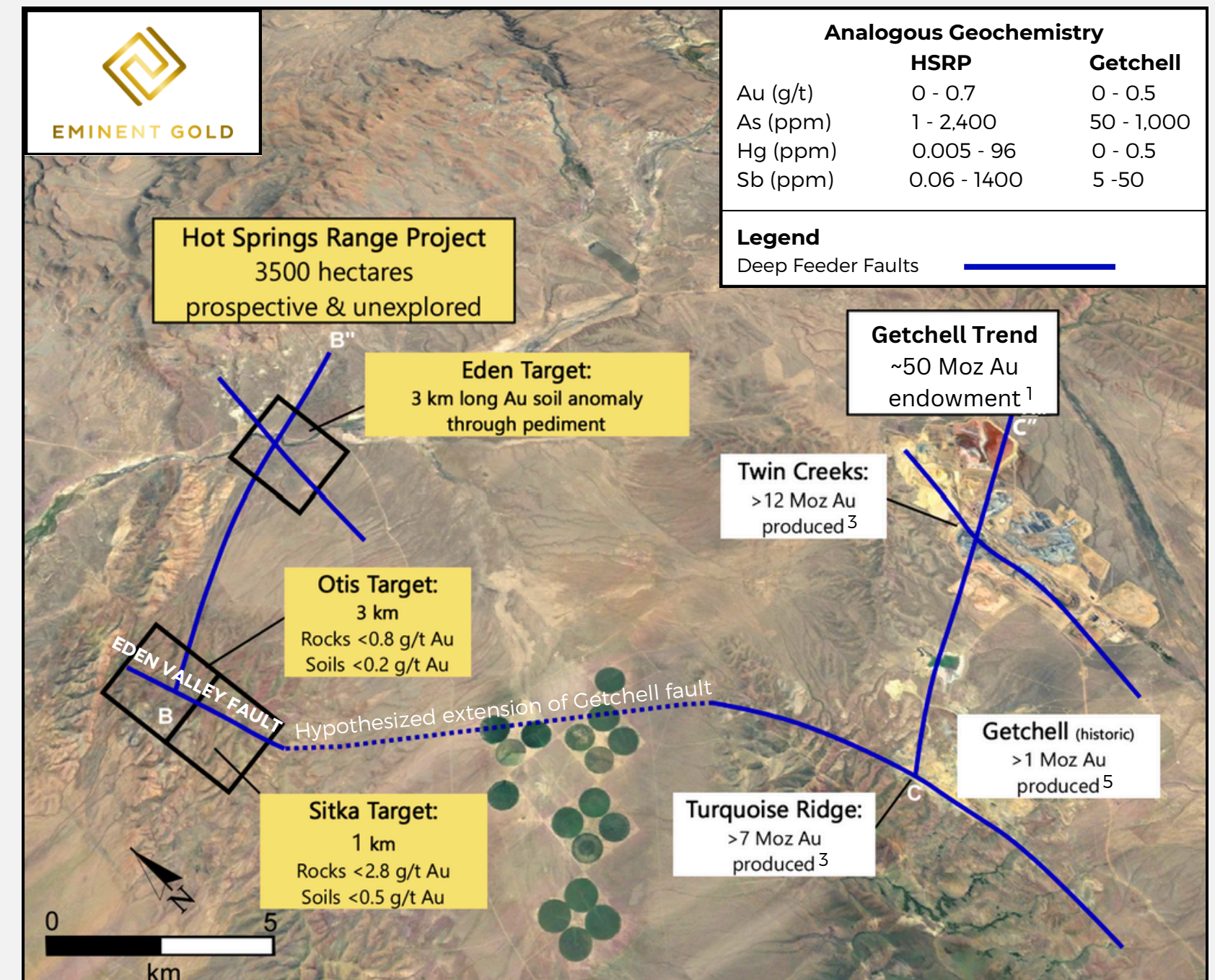
Otis lies on same interpreted structure as Turquoise Ridge separated by post mineral basin

Ideal host rocks include limestone and andesite (similar to Getchell Trend)

Geochemistry supports the conceptual model



Otis looking south | thrust outcrop - sill on right



Analogous Geological Framework | Hot Springs Range vs. Getchell Trend

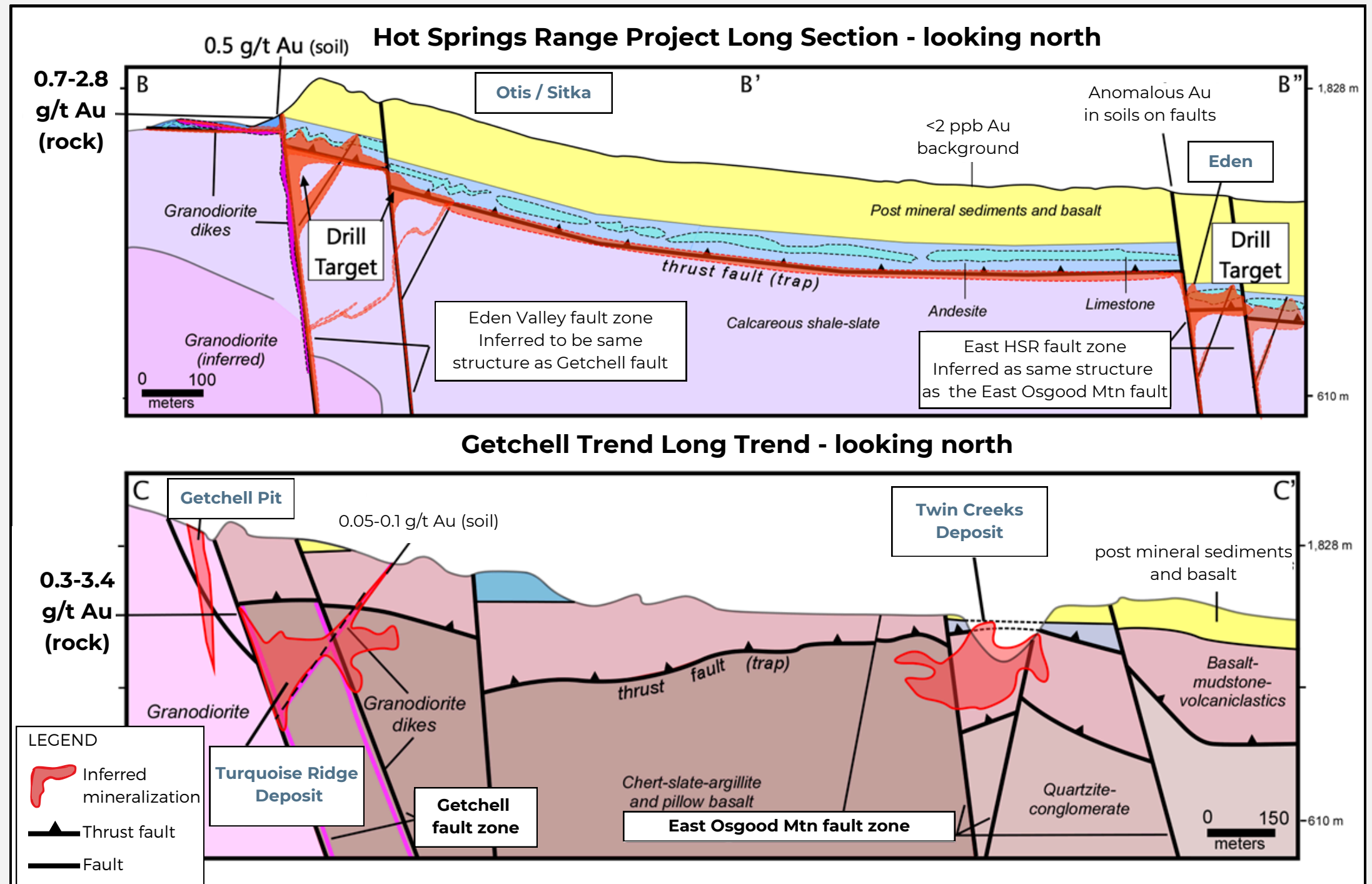
TREND LONG-SECTION COMPARISON

HOT SPRINGS RANGE PROJECT | GETCHELL ANALOGUE

Similar thrust faults acting as traps for gold-rich fluids up from deep feeder faults

2.8 g/t Au sampled from surface rock chips at Otis, Eden Valley fault zone

Turquoise Ridge and Twin Creeks outcropped while Hot Springs Range target is covered by post mineral faults, which explains why it was never previously explored



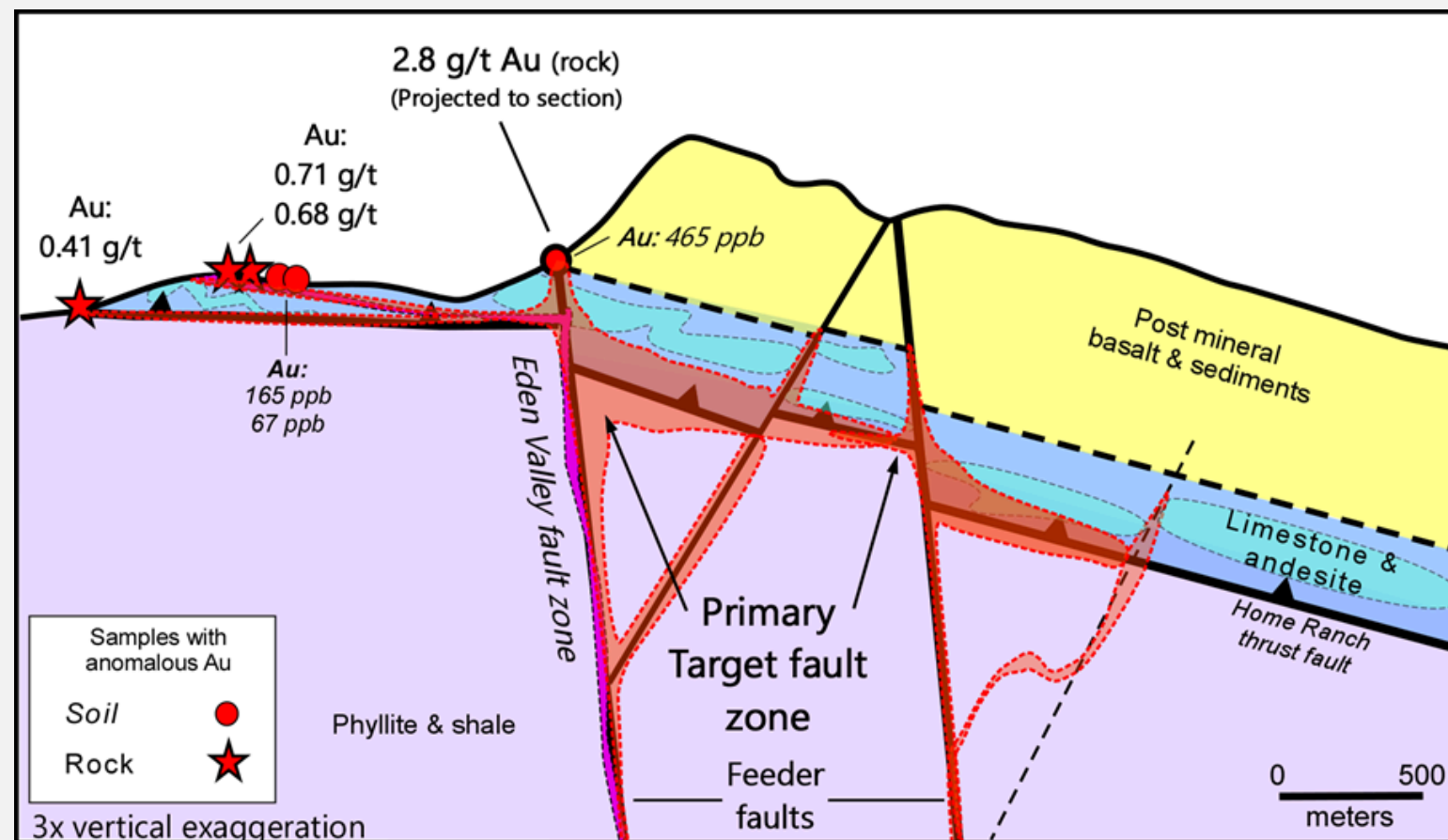
OTIS | CSAMT INTERPRETATION

ROBUST CONDUCTIVITY ANOMALY SUPPORTS THE STRUCTURAL CONCEPT

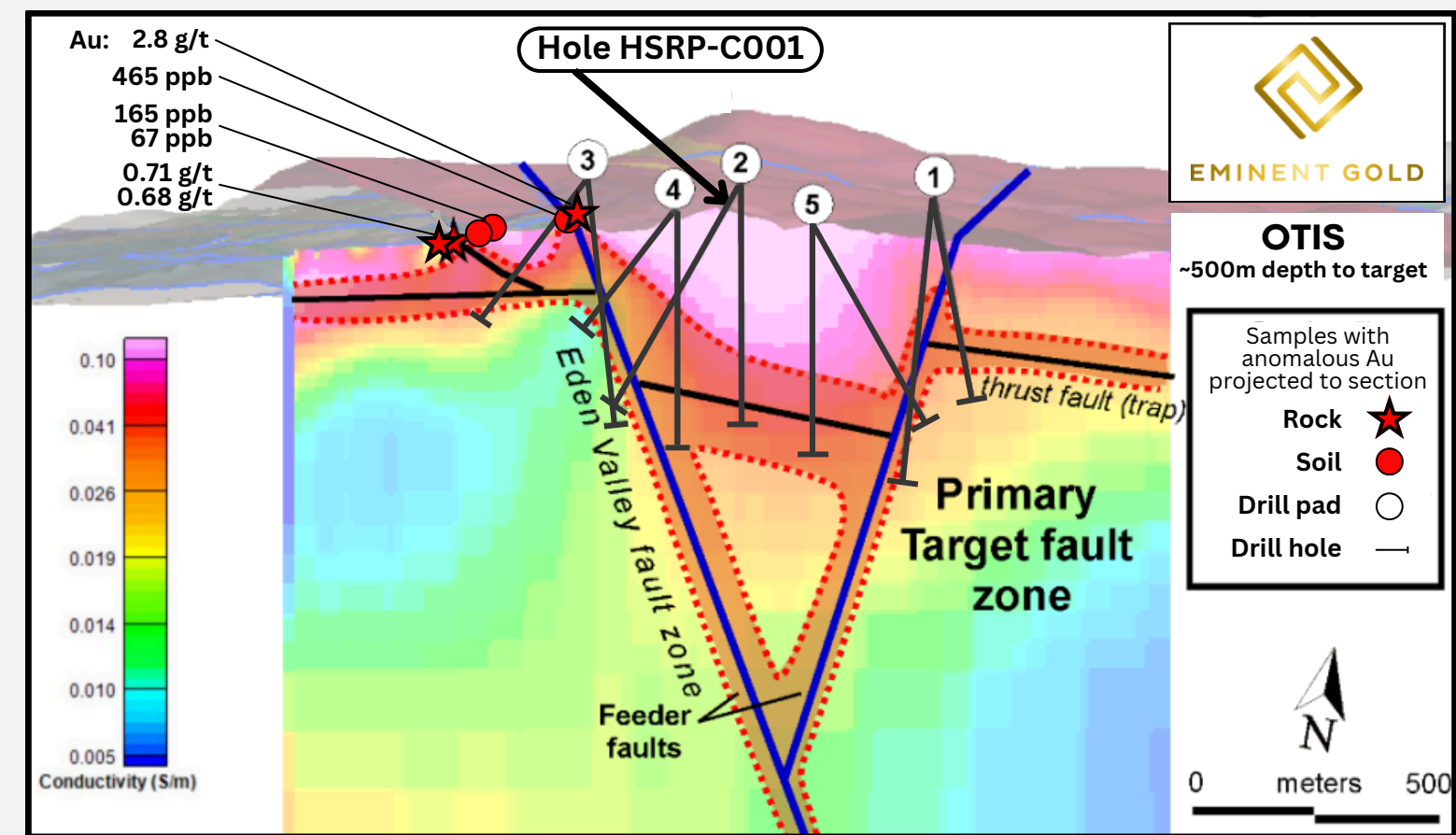
Prospective fault geometry at depth as well as soil (ppb) and rock chip (g/t) assay results support the structural model of near vertical feeder structures intersecting a shallowly dipping thrust fault.

The geophysics and geochemistry support the model of a potential significant gold-bearing system at depth

Interpreted geological cross-section: looking north



Magnified CSAMT cross-section: looking north



CLAIMS MAP

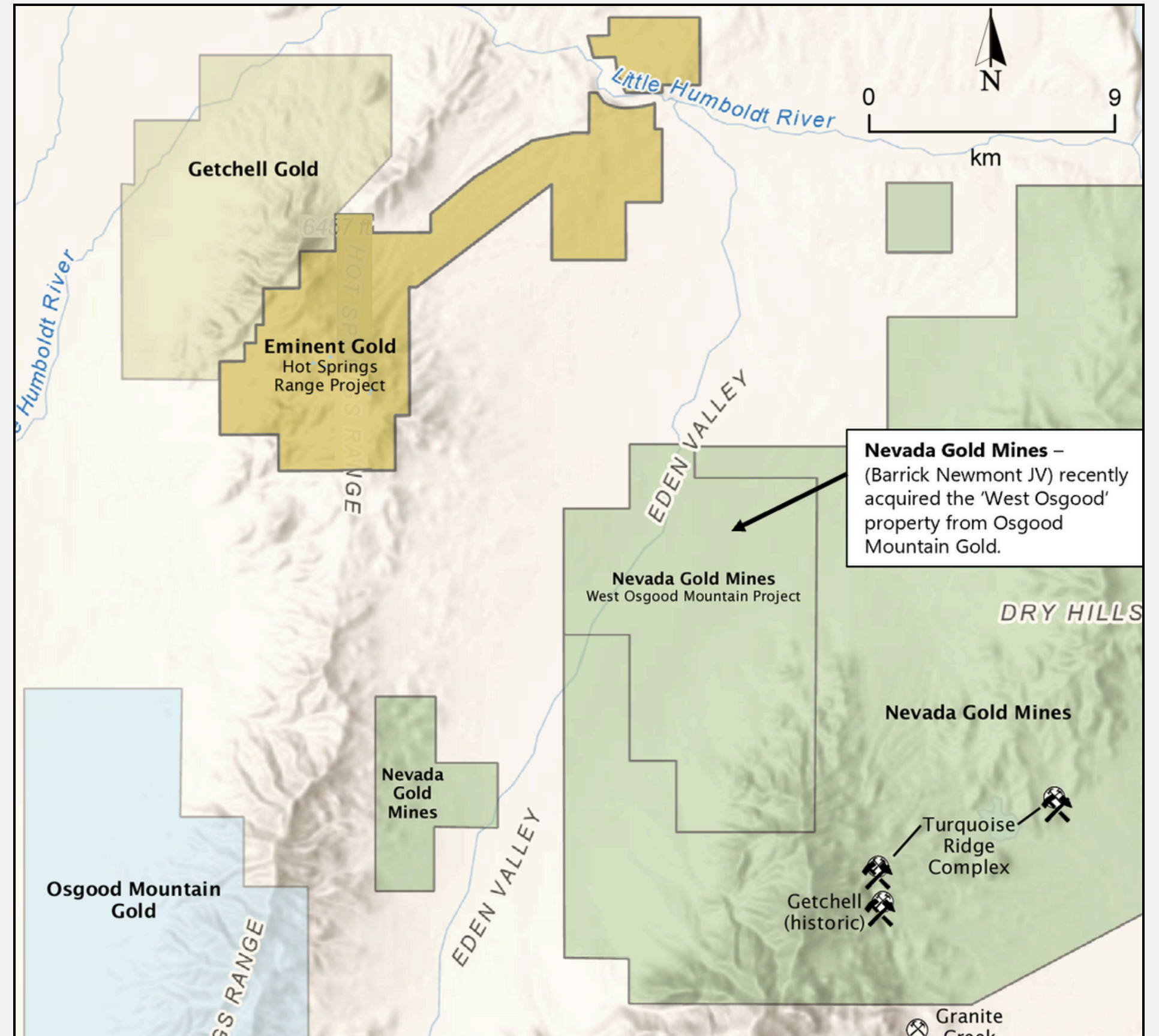
RIGHT ADDRESS FOR A MAJOR GOLD DISCOVERY

Comprises 419 federal lode claims on BLM land, totaling 3,500 hectares

15 km northwest of Nevada Gold Mines Turquoise Ridge District

New thesis in Nevada never previously explored - a direct analogue to a major gold exploration trend

Situated amongst major Carlin-style mines and nearby infrastructure



Hot Springs Range Project | Claims map

GILBERT SOUTH | CELTS

LOCATION | WALKER LANE TREND

REGIONAL GEOLOGY

Multiple historical and operating low and high sulphidation epithermal gold mines

Gilbert South high grade gold veins similar to other multi-million-ounce deposits in the near by historic Aurora (2 Moz Au⁷) and Tonopah districts (2.8 Moz Au + 174 Moz Ag⁷)

Celts is a direct analogue to Silicon, which features a 4.2 Moz heap leachable open pit deposit

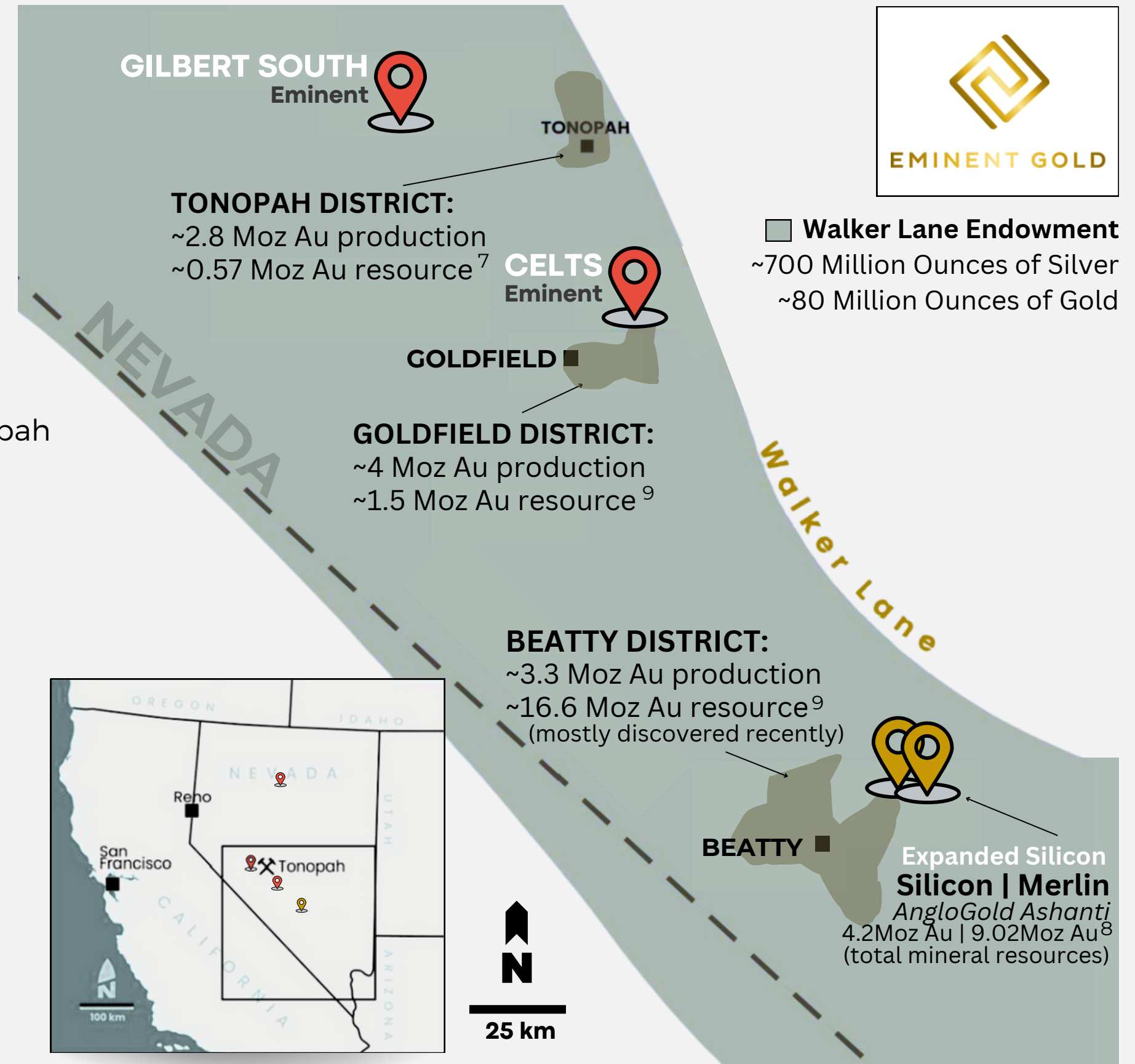
LOCATION

Gilbert South | 129 claims covering 1,050 hectares

Located 42 km west of Tonopah, Nevada

Celts | 67 claims covering 560 hectares

Located 13 kms northeast of Goldfield, Nevada (Historic Production of 4 Moz Gold and 1.5 Moz Silver⁷) and 100 kms northwest of the Silicon discovery (4.2 Moz Gold⁸)



GILBERT SOUTH

NEW HIGH-GRADE VEIN DEPOSIT OPPORTUNITY

100% Ownership

Our objective is to apply the epithermal vertical zonation model to target previously unexplored, high-grade feeder veins

Photo of Gilbert South | looking south

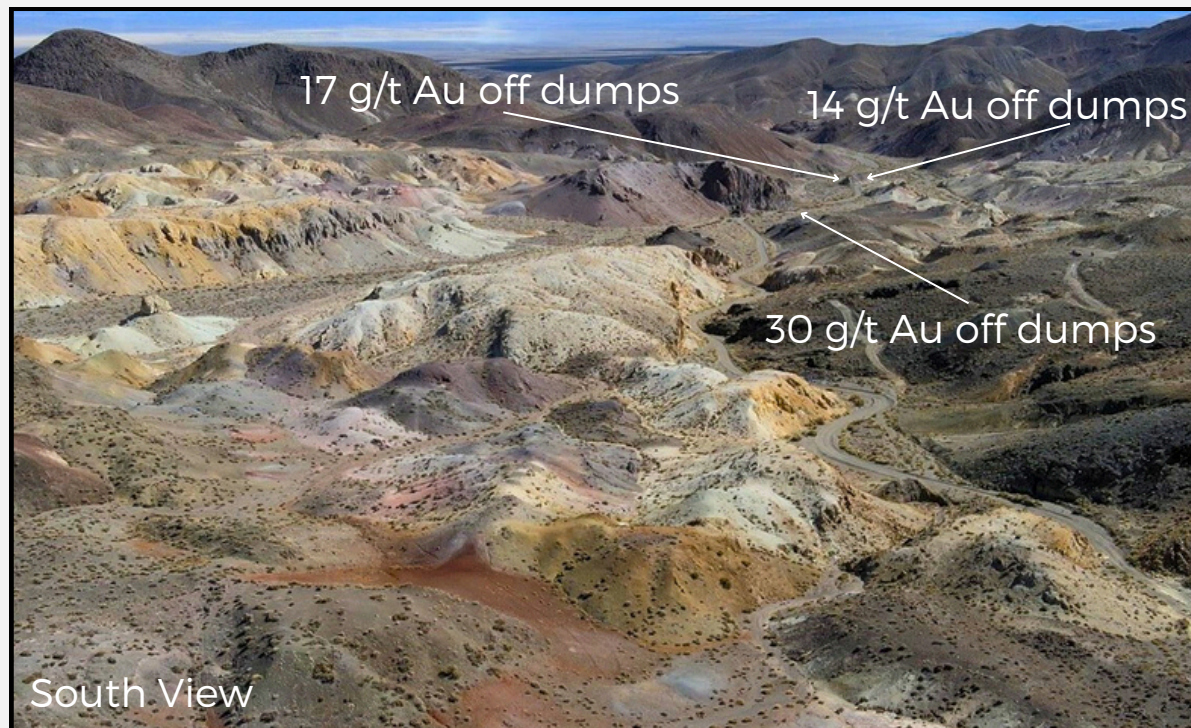
TSXV - EMNT | OTCQB - EMGDF

GILBERT SOUTH | HIGH-GRADE EPITHERMAL GOLD SYSTEM

A MODERN EXPLORATION OPPORTUNITY

- Historical mining of high-grade underground veins
- 1980's mostly vertical RC holes exploring for heap leach potential
- Previous exploration lower-grade heap leach targets
- No previous exploration for large-scale high-grade vein deposits

Extensive visible gold found in historic dumps



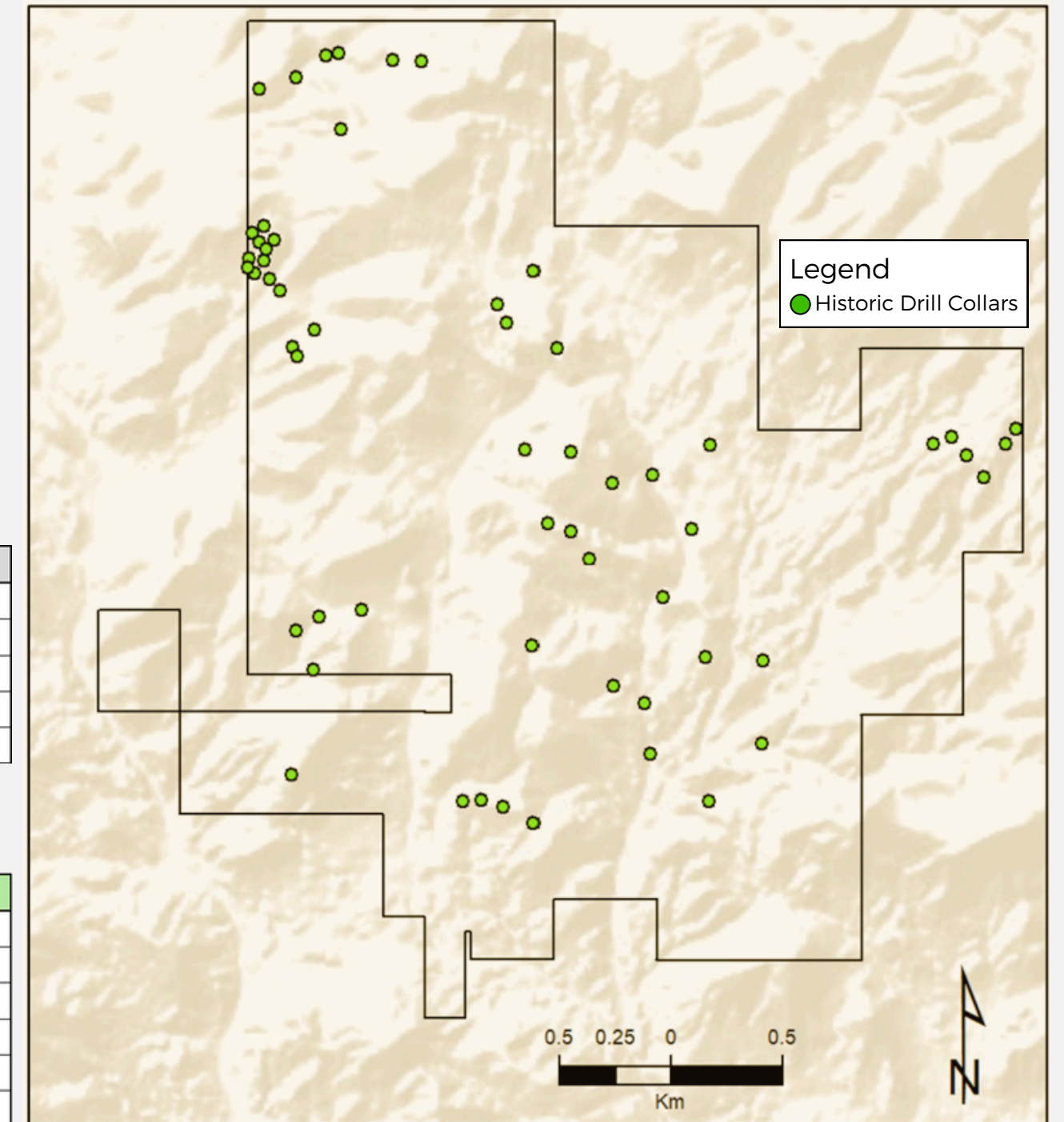
Historic Drilling Summary

Year	Company	Drill Type	Holes	Meters
1986-1988	Atlas	RC	40	>311
1994-1995	Pathfinder	RC	17	2498
1997	INMET	RC	13	2486
2005	Platt River Gold	RC	10	1309
2007	Gold Summit	RC	1	354

Historic Drilling Assay Highlights

HoleID	From M	To M	Interval_M	Au_ppm
34-8	0	24.4	24.4	0.52
34-8	54.9	56.4	1.5	1.17
40-08	76.2	82.3	6.1	1.3
40-08	76.2	79.2	3	2.4
SG-0805	71.6	73.2	1.5	3.76
SG-1205	170.7	173.8	3	1.47

Historic Drill Collars | Gilbert South



GILBERT SOUTH

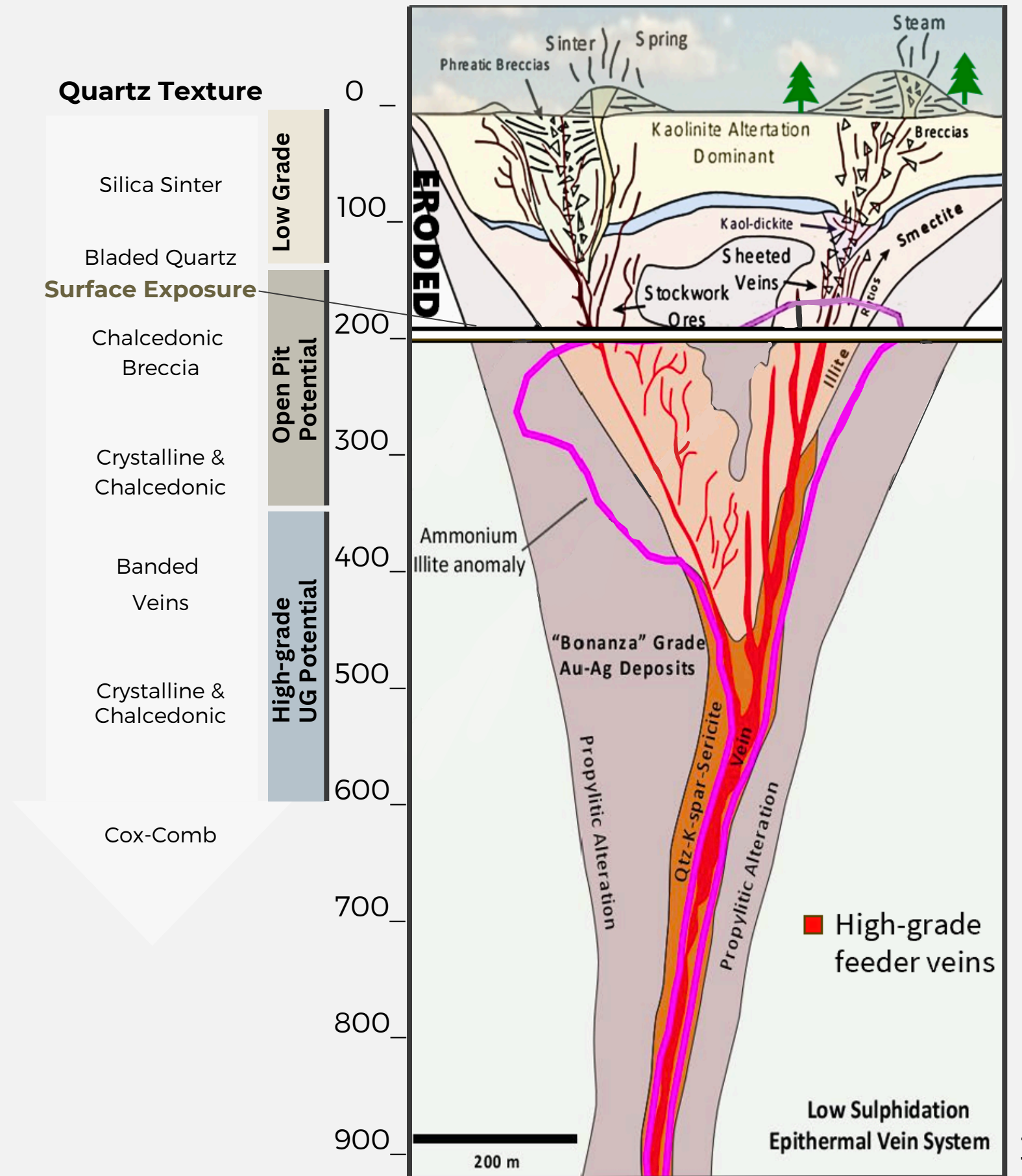
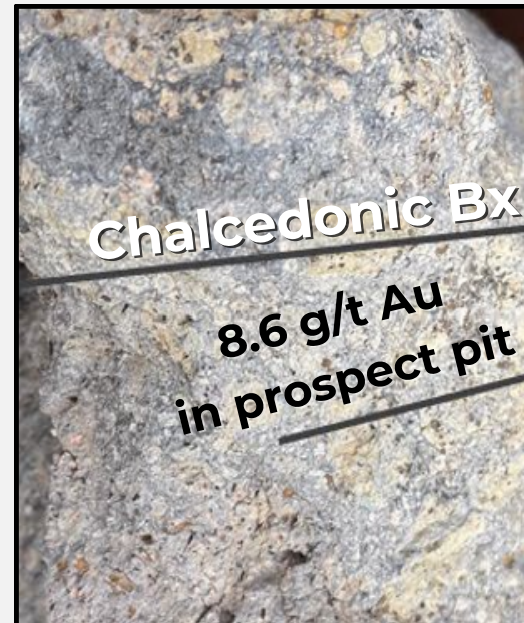
EPITHERMAL VERTICAL ZONATION IDEAL FOR SHALLOW FEEDER VEINS

Rock textures indicate the system has eroded to the top of the high-grade vein level

Significant strike length

Potential for wider intercepts at depth

Examples of rock textures found at Gilbert South



GILBERT SOUTH

3 PROSPECTIVE DRILL TARGETS

PRETTY BOY

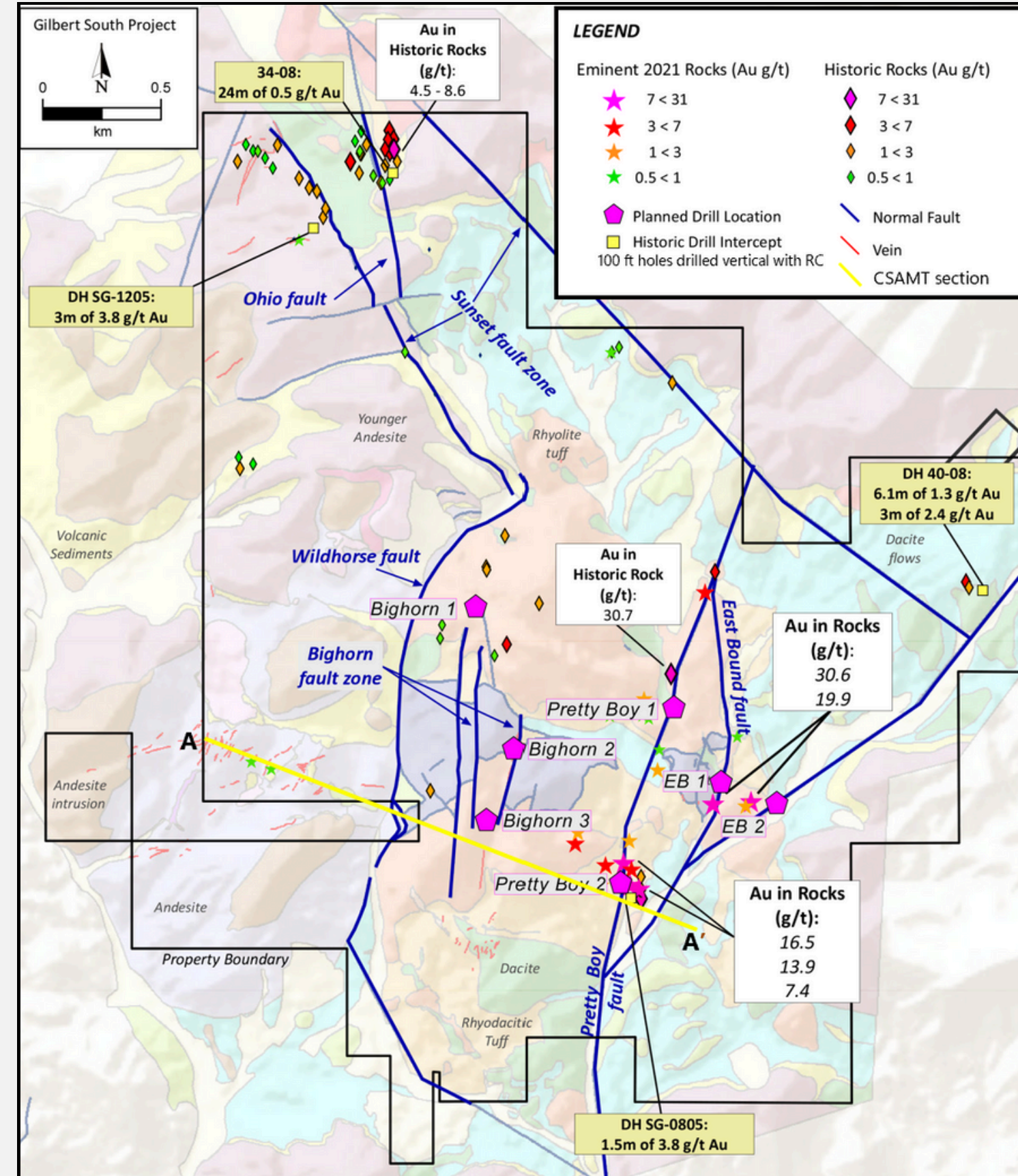
- Vein network linked over 2.5 km strike
- Abundant visible gold in banded veins
- Rock samples up to 30.7 g/t Au
- Large electromagnetic contrast
- Extensive small-scale workings along entire strike length

BIG HORN

- 1.5 km strike length
- Best gold-in-soil anomaly (<700 ppb Au)
- Electromagnetic contrast up to 250-meter-wide

EB (EAST BOUND)

- Minor workings
- Rock samples up to 30.6 g/t Au
- Fault intersections



GILBERT SOUTH

TARGETING SOURCE OF HIGH-GRADE EPITHERMAL VEIN SETS

Geophysics identifies multiple deep feeder-structures which correspond to mapped structures and surface geochemistry

TARGET STRUCTURES | DRILL READY

- up to 2.5 km long
- continue more than 250 m down dip
- Main high-grade vein targets never drilled

ABUNDANCE OF HIGH-GRADE GOLD VEIN SETS

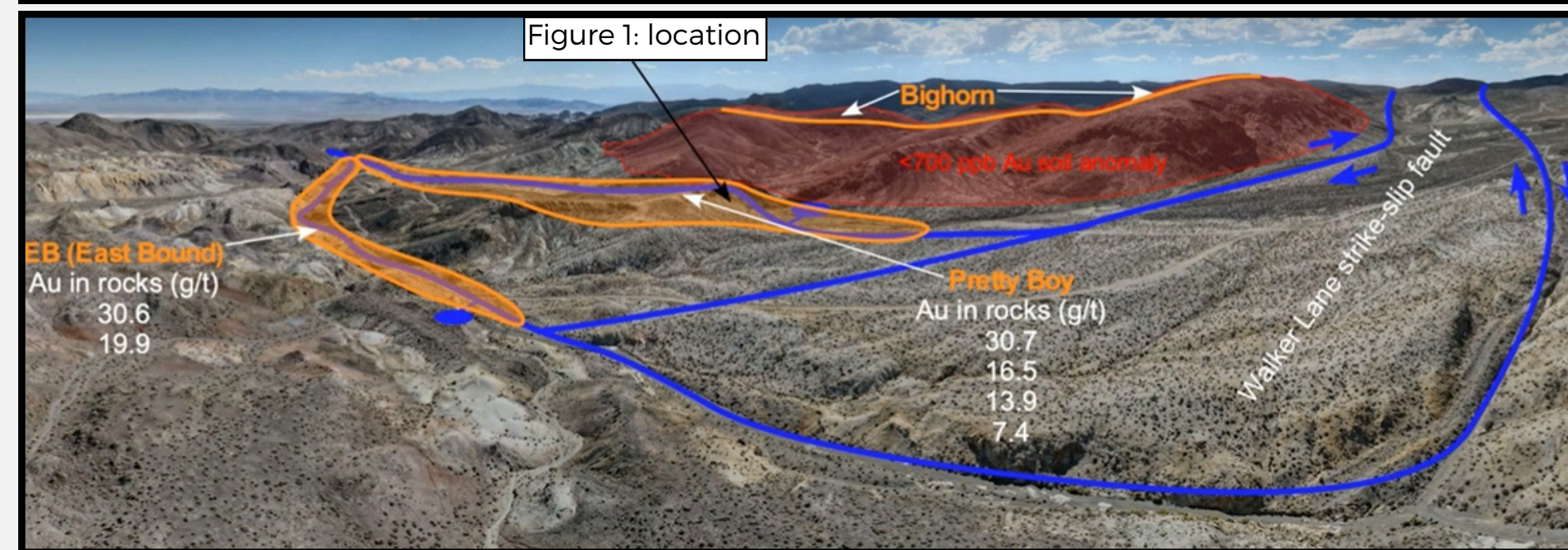
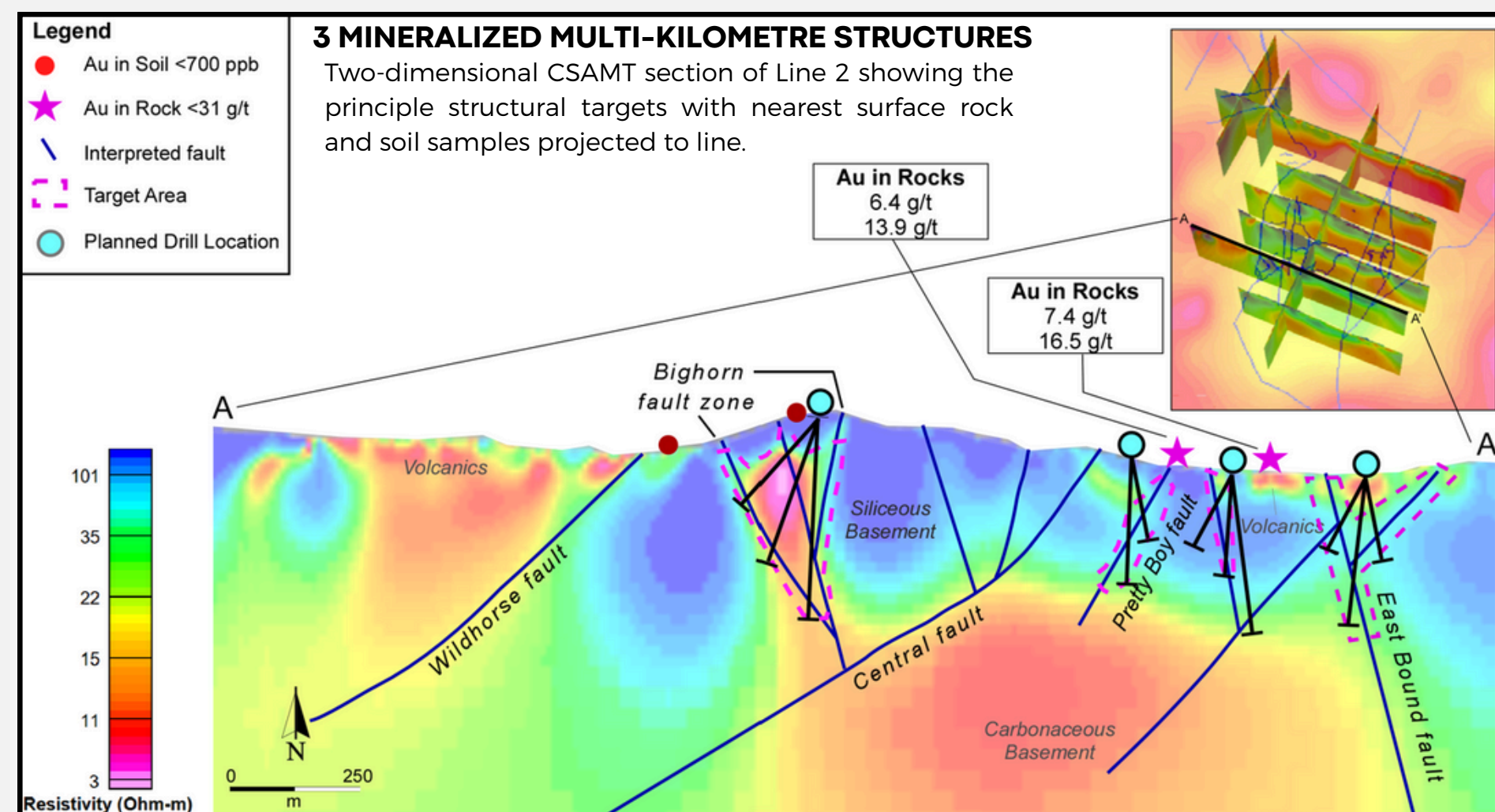
Superficial veins appear to have potential to be part of one large epithermal system



Magnified outcrop vein



Pretty Boy surface outcrop veining



Panoramic view west

CELTS | NEW MAJOR GOLD ANALOGUE OPPORTUNITY

GENERATED BY THE TECHNICAL TEAM THAT IDENTIFIED SILICON

100% Ownership *on completion May 2025*

Our objective is to identify a similar plus-million-ounce deposit suitable for open-pit mining, like the Silicon gold deposit (4.2 Moz[®]), located beneath a similar steam-heated alteration dome.

Photo of advanced argillic alteration in the rhyolite dome at Celts | looking northeast

TSXV - EMNT | OTCQB - EMGDF

CELTS

GOOGLE EARTH IMAGE AND GEOLOGY MAP

- Rhyolite dome intrudes through rhyolite tuff and basalt
- Steam cap forms with alteration very similar to Silicon
- The host rhyolite ages at the Expanded Silicon project (13.22 Moz Au⁸) are the same as at the Celts property

Figure below is a Google Earth image showing dome and steam cap, which form the most predominant topographic feature on the property

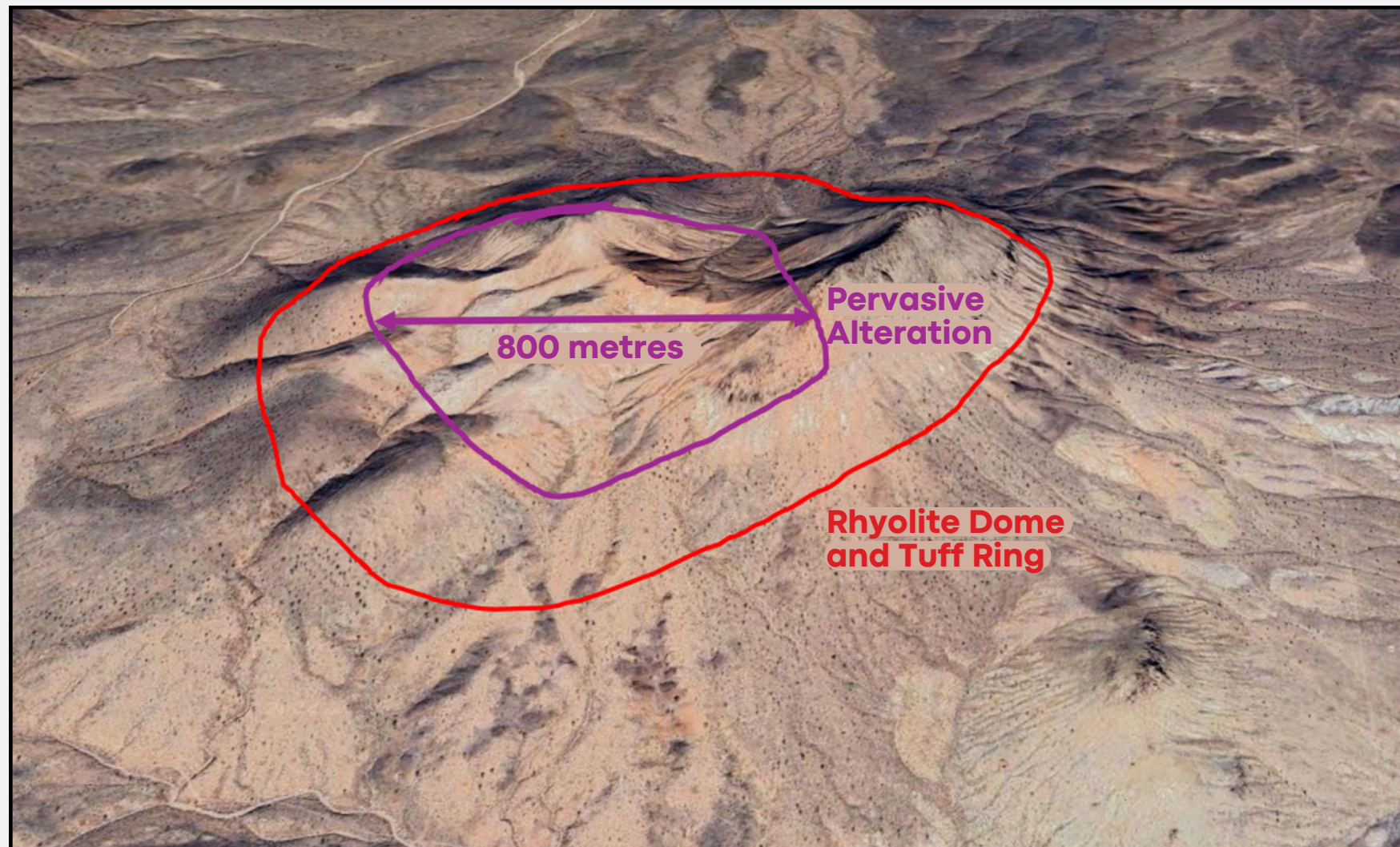
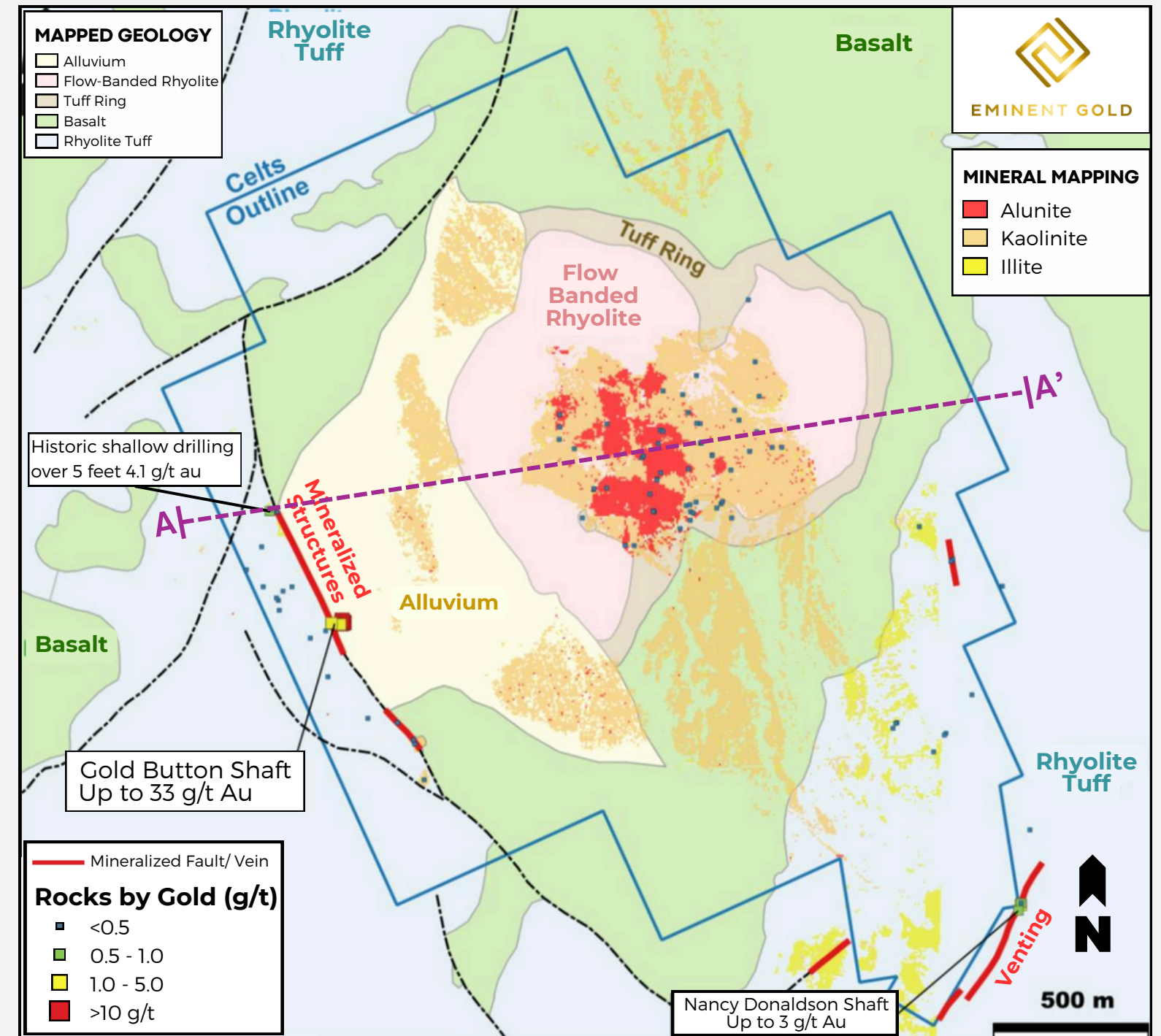


Figure below is geology, alteration, and vein map
Alteration minerals obtained by hyperspectral imaging



CELTS | SILICON ANALOGUE

DISCOVERY OPPORTUNITY

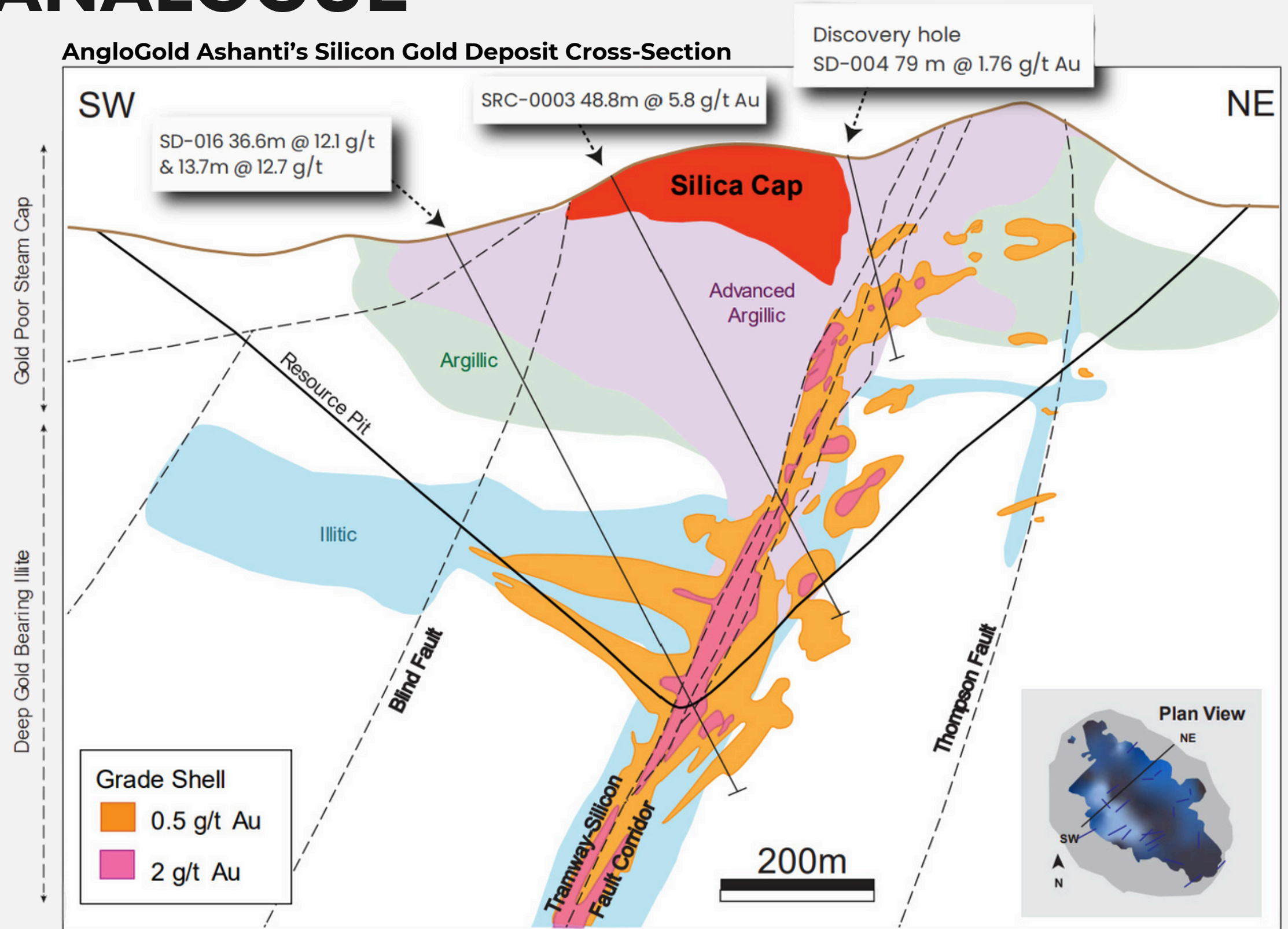
A strongly developed, gold-poor steam heated alteration cell that may overlie a boiling zone

Steam cap is composed of advanced argillic alteration (alunite and kaolinite) and silica

Alteration and mercury anomalies at surface at Silicon

Multiple similarities with AngloGold Ashanti's recent Silicon discovery (Global resource of 4.2 million ounces of oxide gold⁸)

The Company's QP has not visited the Silicon Gold Project and is unable to verify information pertaining to mineralization on the Project, and therefore, the information in this section may not be necessarily indicative of the mineralization on the Celt Project that is the subject of this portion of the Presentation.

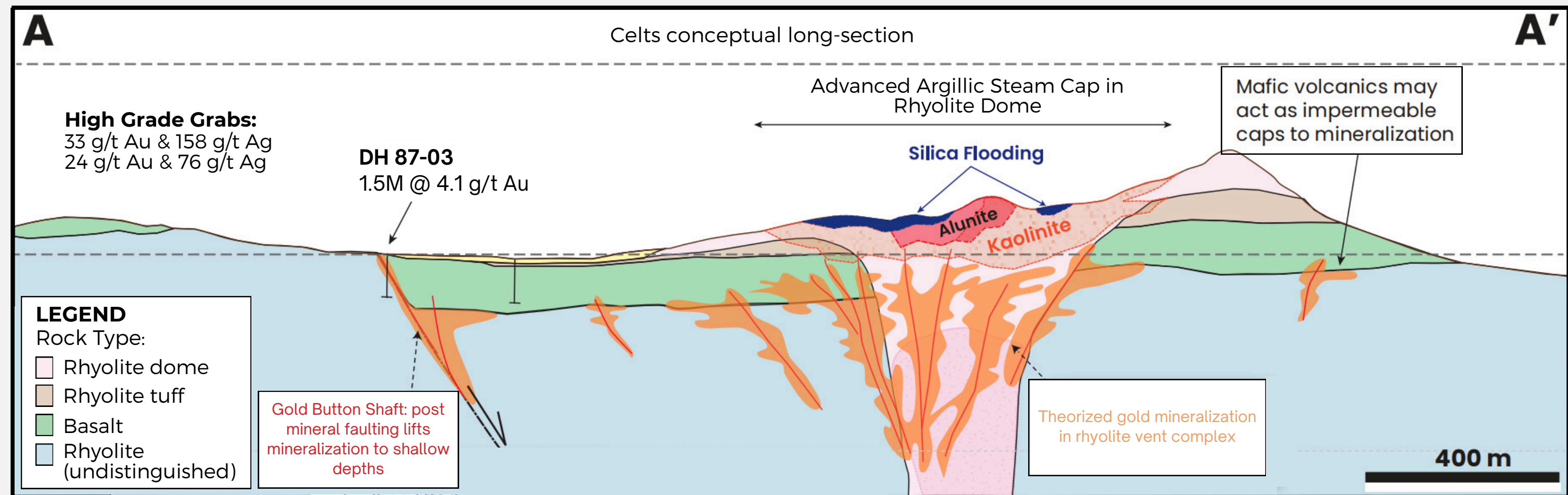
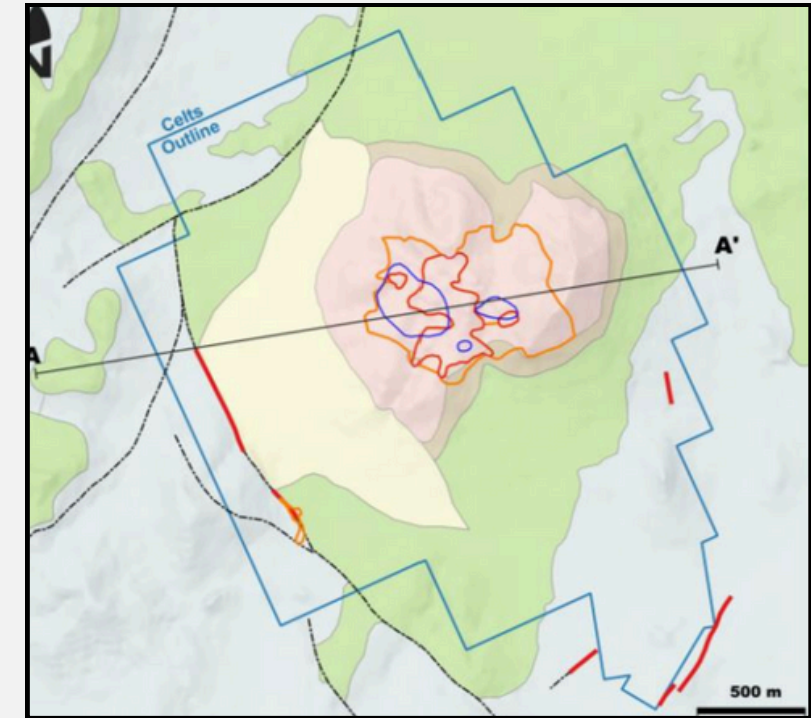


Drill hole locations are approximate and schematic.

CELTS | LONG-SECTION

TARGET CONCEPT

- Magma and steam conduit principal structural target for drilling
- Gold zones at depth below advanced argillic alteration (alunite and kaolinite) and silica is a classic feature of dome hosted epithermal deposits such as Silicon
- Mineralization may also pool under impermeable basalt unit
- High grade gold veins "leaking" around edge of basalt unit supports this mineralization model



CAPITALIZATION

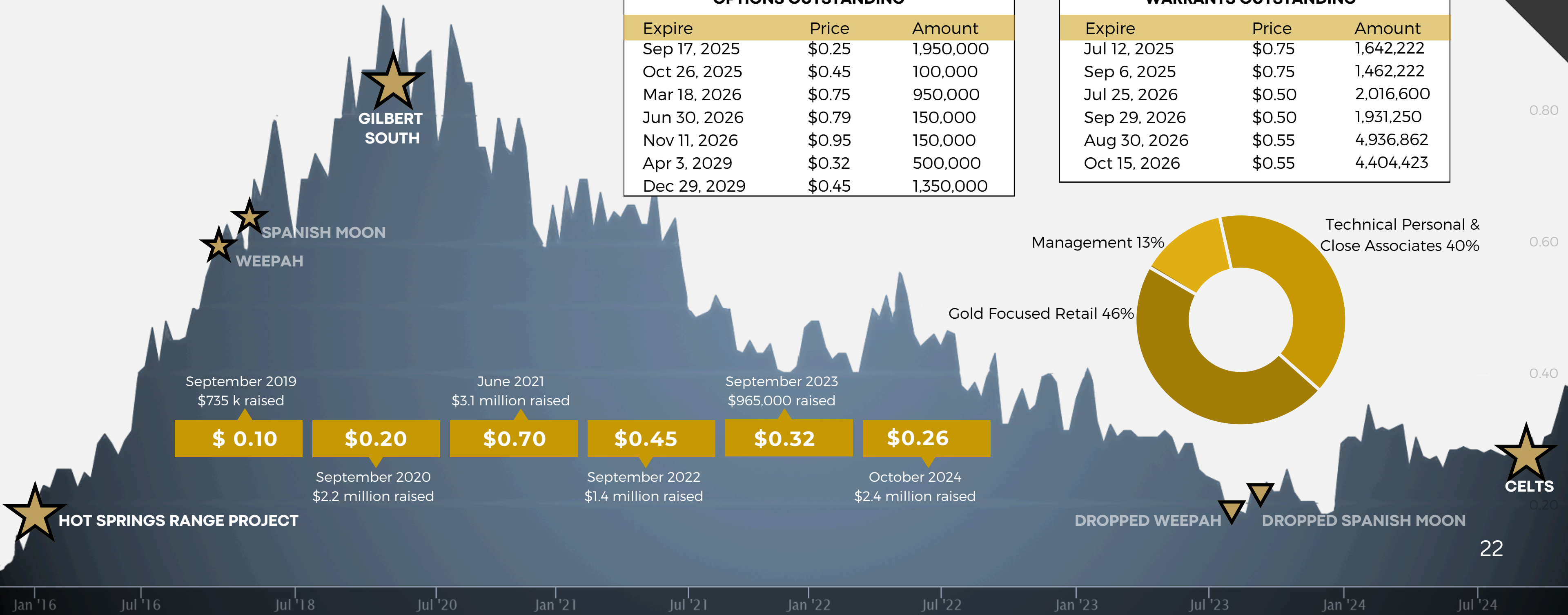
QUALITY SHAREHOLDERS

TSXV - EMNT | OTCQB - EMGDF
as of December 31, 2024

ISSUED & OUTSTANDING 59,317,217
Options 5,150,000
Warrants 16,393,579
FULLY DILUTED 80,860,796

OPTIONS OUTSTANDING		
Expire	Price	Amount
Sep 17, 2025	\$0.25	1,950,000
Oct 26, 2025	\$0.45	100,000
Mar 18, 2026	\$0.75	950,000
Jun 30, 2026	\$0.79	150,000
Nov 11, 2026	\$0.95	150,000
Apr 3, 2029	\$0.32	500,000
Dec 29, 2029	\$0.45	1,350,000

WARRANTS OUTSTANDING		
Expire	Price	Amount
Jul 12, 2025	\$0.75	1,642,222
Sep 6, 2025	\$0.75	1,462,222
Jul 25, 2026	\$0.50	2,016,600
Sep 29, 2026	\$0.50	1,931,250
Aug 30, 2026	\$0.55	4,936,862
Oct 15, 2026	\$0.55	4,404,423



WHY EMINENT GOLD?

Multiple large-scale gold discovery opportunities in a premier mining jurisdiction

Experienced management with a proven track record at monetizing discovery

Robust gold market - strong price outlook

All projects slated for drilling in 2025

HOT SPRINGS RANGE

Targeting a world-class extension of the 50Moz Getchell Gold Trend¹

Drilling 2024

GILBERT SOUTH

Targeting the source of previously mined high-grade veins

Drilling 2025

CELTS

Targeting an open-pit analogue to AngloGold Ashanti's Silicon (4.2 Moz Au⁸) discovery

Drilling 2025


TSXV - EMNT | OTCQB - EMGDF



TSXV - EMNT | OTCQB - EMGDF

PURSUING MAJOR GOLD DISCOVERIES IN THE GREAT BASIN

CONTACT

 +1-604-505-7751

 info@eminentgoldcorp.com

Sign up for the latest news:

www.eminentgoldcorp.com

APPENDIX

1. Hot Springs Range Project
2. Gilbert South
3. Celts
4. References

HOT SPRINGS RANGE PROJECT

Eminent holds 100% ownership in 419 claims totaling >3,500 hectares at HSRP. 168 Leased, 143 staked in 2020 and 108 staked in 2021.

In addition, in March 2020, the Company entered into an option agreement to earn a 100% interest in 168 unpatented lode mining claims covering approximately 1,375 hectares, located on the Getchell trend in Humboldt County, Nevada.

Under the terms of the Agreement, the Company has up to five years to acquire a 100% interest in the Property by making cumulative cash payments of USD \$136,140 and cumulative share payments of 1,650,000 common shares in the capital of the Company, followed by a \$1,500,000 payment payable in cash or common shares at the option of the Company, as follows:

- 1. USD\$50,000 Cash Payment and issue of 100,000 shares within 5 business days of the receipt of TSX Venture Exchange ("TSXV") approval for the agreement upon entering into the Agreement ("Effective Date");
- 2. USD\$25,000 Cash Payment and 150,000 shares on or before the first anniversary of the Effective Date;
- 3. USD\$25,000 Cash Payment and 300,000 shares on or before the second anniversary of the Effective Date;
- 4. USD\$25,000 Cash Payment and 300,000 shares on or before the third anniversary of the Effective Date; and
- 5. USD\$25,000 Cash Payment and 300,000 shares on or before the fourth anniversary of the Effective Date and;
- 6. 500,000 shares and optional cash balloon payment of \$1,500,000 on or before the fourth anniversary of the Effective Date.

The Optioner shall retain a Net Smelter Royalty of 2% which the Company may purchase in 0.1% increments for USD\$100,000 for each increment up to maximum of 1%.

TSXV - EMNT | OTCQB - EMGDF

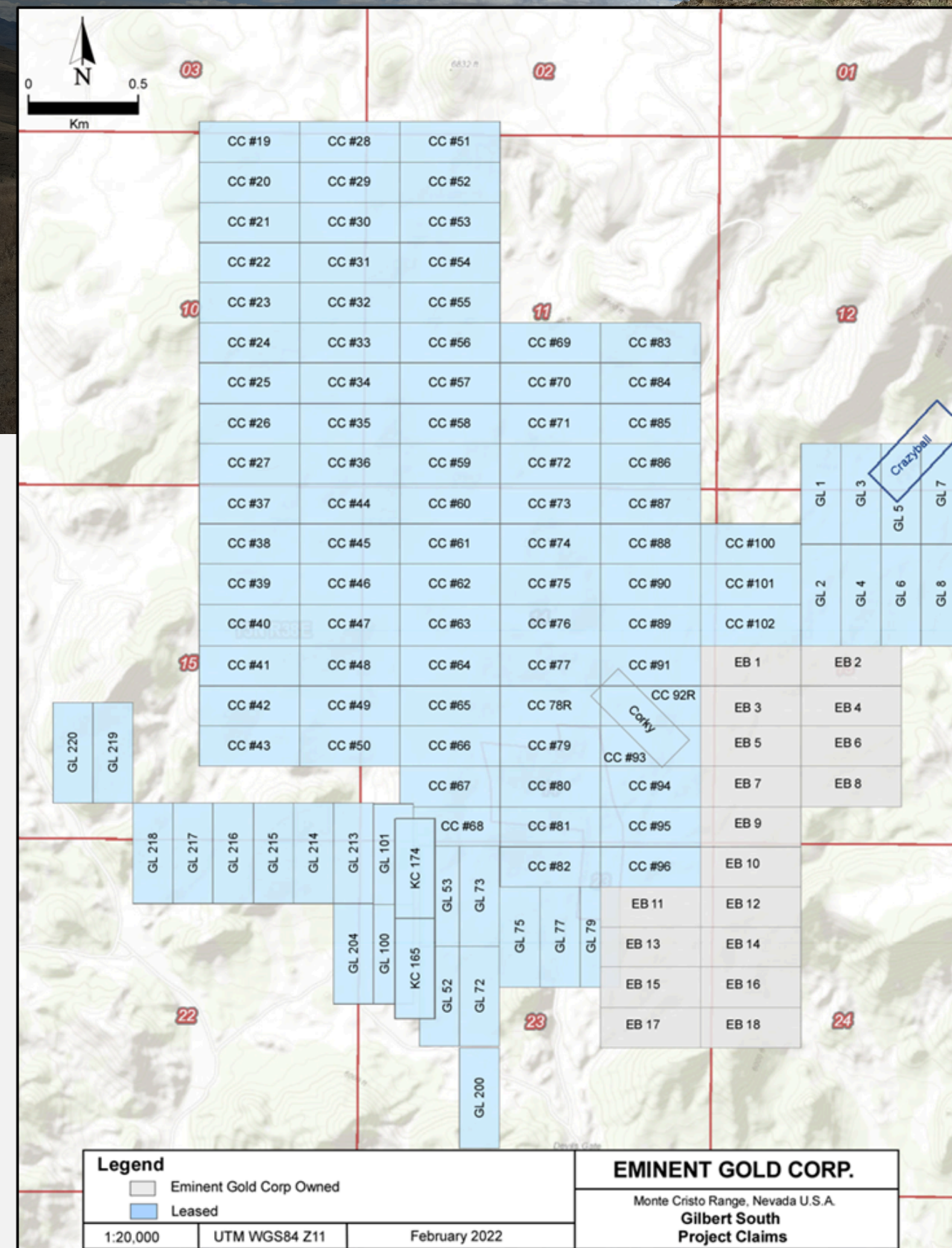
GILBERT SOUTH

The Company acquired 100% interest in the 110 unpatented claims (890 hectares). By way of Consideration, the Company issued 350,000 common shares to the Seller. And an additional 200,000 common shares will be issued when the company initiates a drill program at Gilbert South Property, located 30 kilometres west of Tonopah in the Walker Lane trend, Nevada.

The Timberline claims are currently subject to a 3% net smelter return royalty, the Nevada Select claims are currently subject to a 2% net smelter return royalty, and the GL claims are currently subject to a 2.25% net smelter return royalty. The Company shall have the option and right to repurchase 1% of the GL royalty for \$1 million (U.S.). The Seller shall have the option to buy down 1% of the Timberline net smelter return for \$1.5 million (U.S.).

The 110 unpatented claims include:

- Two (2) unpatented claims known as the “Nevada Select Claims”;
- Twenty-seven (27) unpatented claims defined as the “GL Claims” and;
- Eighty-one (81) unpatented claims defined as the “Timberline Claims”.





TSXV - EMNT | OTCQB - EMGDF

CELTS

The Company will acquire 100% interest consisting of 67 unpatented mining claims on BLM ground (560 hectares). By way of consideration, as of November 20, 2024, the Company will pay US\$400,000 as follows:

Total Payment: US\$400,000

At Closing:

- US\$30,000 in cash
- US\$45,000 in Eminent common shares

Within Six Months of Closing:

- US\$325,000 in cash or Eminent common shares (at Eminent's discretion, subject to regulatory approval)

Property Claims:

- 3% net smelter return (NSR) royalty
- Option to repurchase 1% of the royalty for US\$1.5 million (reducing the NSR to 2%)

Proceeds Split:

- US\$200,000 in cash and/or shares to each Orogen and a subsidiary of Altius Minerals Corporation ("Altius")

The Celts property is located 13 kilometers northeast of Goldfield (Historic production of 4.2 Moz gold and 1.5 Moz Silver). Celts is within the highly prospective Walker Lane trend of epithermal deposits, Nevada.



TSXV - EMNT | OTCQB - EMGDF

REFERENCES

1. https://s25.q4cdn.com/322814910/files/doc_downloads/operations/ngm/Turquoise-Ridge-Technical-Report-March2024.pdf
2. USGS. 2023. Gold in August 2023. Mineral Industry Surveys.
3. Nevada Gold Mines. 2021. May 20. Investor Day Presentation. Barrick Gold Corporation
4. Energyandgold.com. 2020. 8/24/2020
5. Lane, T., Harvey, T., Moritz, R., Samari, H., Breckenridge, L..2021. Preliminary Economic Assessment NI 43-101 Technical Report Granite Creek Mine Project Humboldt County, Nevada, USA. Global Resource Engineering Ltd.. November 8, 2021.
6. Johnson, R.J. 2020. Turquoise Ridge Hydrothermal Footprint. University of Nevada Reno, Center for Research in Economic Geology.
7. Barnaby-Rockwell. The Goldfield Mining District Nevada An Acid-Sulfate Bonanza Gold Deposit. October 2000. www.researchgate.net
8. <https://reports.anglogoldashanti.com/23/wp-content/uploads/2024/04/AGA-RR23.pdf>
9. Western Mining History. <https://westernmininghistory.com/4210/gold-districts-of-nevada/>
10. University of Nevada, Reno. (n.d.). Tonopah Silver District. Retrieved from <https://gisweb.unr.edu/MiningDistricts/>

43-101

<https://eminentgoldcorp.com/projects/technical-reports/>