



EMINENT GOLD

CELTS – Silicon Analogue
Alteration Cap

High-Conviction Gold Exploration in Nevada's Most Proven & Rapidly Emerging Discovery Corridors

Unlocking what could be Nevada's next district-scale gold system—backed by **Kinross**, a tightly held float, and three high-impact projects with near-term catalysts. *The setup is classic: early-stage, high-conviction, positioned ahead of broader market recognition.*

Flagship Project: Hot Springs Range (HSRP) – Drilling Resumes

Emerging Gold Trend Carlin-Style System

Otis is already demonstrating strong gold potential. Combined with Eden's exploration upside, HSRP is emerging as a rare, multi-zone system with the scale to support a district-defining gold opportunity.

- Every hole hits gold in maiden drill program—grades up to **8 g/t Au** confirm strong mineralization potential
- Untested parallel corridor located beside Nevada's **50Moz Getchell Trend**¹
- Otis target shows analogues to Turquoise Ridge (~7Moz Au produced²)
- Follow-up drilling underway to test the main structure
- Kinross acquired 9.9% stake after first drill hole

Celts Project – Drilling Q4 2025

Silicon-Style Open Pit in Nevada's prolific Walker Lane Trend

Celts carries the same geological DNA as Silicon—and will be drilled using the proven modelling that delivered AngloGold Ashanti's first intercepts at Silicon, which led to their major discovery.

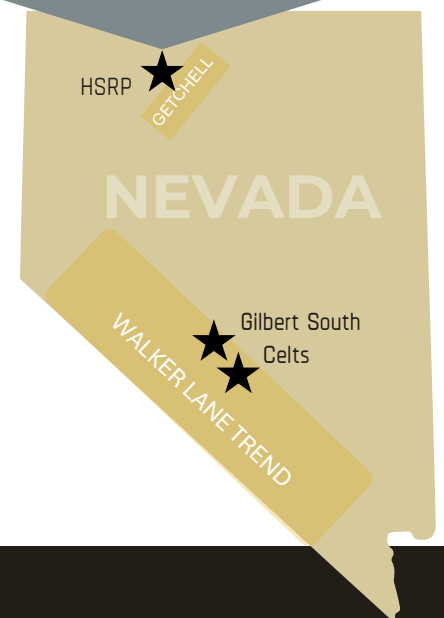
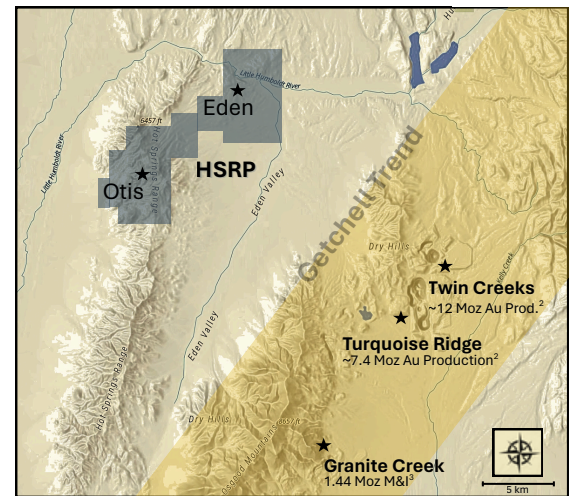
- Identified as a direct analogue by the same technical team behind Silicon and Merlin—Nevada's largest recent gold discovery
- Peripheral surface samples up to **33 g/t Au** support steam cap model
- IP survey reveals a faulted boiling zone beneath a rhyolite dome—a structural hallmark of Silicon
- Barrick staked ground next door, underscoring the district's strategic importance

Gilbert South – Drilling 2026

High-Grade Vein System Bonanza Surface Gold Untested Feeder Zones

Gilbert South offers rare exploration upside—bonanza-grade surface gold with shallow feeder structures likely exposed by erosion. Shallow historic mining confirms the gold potential, but the source structure remains untouched, presenting a high-impact opportunity for a major discovery.

- Historic dumps show visible gold up to 30.7 g/t
- Vein network spans 2.5 km
- First targeted drill program on interpreted feeder zone
- Located in Walker Lane, near major epithermal districts



Capital Structure

Last Financing \$4.3 M (May 2025)
\$0.40 w/ ½ warrant at \$0.70

Shares Outstanding	77,872,194
Options	5,150,000
Warrants	20,513,518
Fully Diluted	103,535,712
Market Cap	\$23.3 M

Ownership

10.0%	Management
9.9%	Kinross
32.0%	Close Associates
48.0%	Retail Investors

Investment Highlights

- **Backed by Kinross:** Strategic partner with a 9.9% stake—validation from a major.
- **Tight Float:** Early-stage exposure with strong insider alignment.
- **Three 100%-Owned Nevada Projects:** Each positioned in proven gold corridors.
- **Drill-Ready Catalysts:** Active programs across all assets—HSRP, Celts, Gilbert South.
- **Discovery-Driven Team:** with proven track record for major discovery

Upcoming Catalysts & Milestones

Q3 2025	HSRP Gravity Survey Completion HSRP Drilling Resumes Claim Enhancement HSRP Claim Enhancement Celts Celts Drill Permits Approved
Q4 2025	HSRP Drill Results Maiden Drill Program Initiated at Celts HSRP Drilling Resumes

Experienced Management

Paul Sun – President & CEO, Director
Dan McCoy PhD – Chief Geologist & Director
Martin Bajic – CFO
Michael Bebek – Head of Communications
Michael Kosowan – Director
Ann Carpenter – Director

Proven Track Record

***Dan McCoy** led the 5 Moz Esaase discovery in Ghana (now mined by Galiano Gold), delivering an 18x return at **Keegan Resources**, and later drove exploration at **Cayden Resources**, leading to its C\$205M acquisition by Agnico Eagle a 5x return for early investors.*

Contact Us

Michael Bebek
Tel: +1 604 505 7751
michael@eminentgoldcorp.com

Detailed Investor Deck

Available via QR code:

