



EMINENT GOLD

# PURSUING MAJOR GOLD DISCOVERIES IN THE GREAT BASIN

Investor Presentation - Jan 2026

TSX-V: **EMNT** | OTCQB: EMGDF | FSE: 7AB





# Disclaimer

## Cautionary Statement

This presentation has been prepared by Eminent Gold Corp. (the “Company”) for general informational and marketing purposes only. It is a high-level summary and does not contain all information that may be material to an investment decision. Readers are encouraged to review the Company’s continuous disclosure filings on SEDAR+ ([www.sedarplus.ca](http://www.sedarplus.ca)) for complete technical and corporate information.

## Forward-Looking Information

Certain statements in this presentation constitute forward-looking information under applicable securities laws. These statements involve known and unknown risks, uncertainties, and other factors that may cause actual results to differ materially from those anticipated. The Company undertakes no obligation to update forward-looking information except as required by law.

## Mineral Disclosure

Mineral resources that are not mineral reserves do not have demonstrated economic viability. Canadian disclosure standards differ from those in other jurisdictions, including the United States.

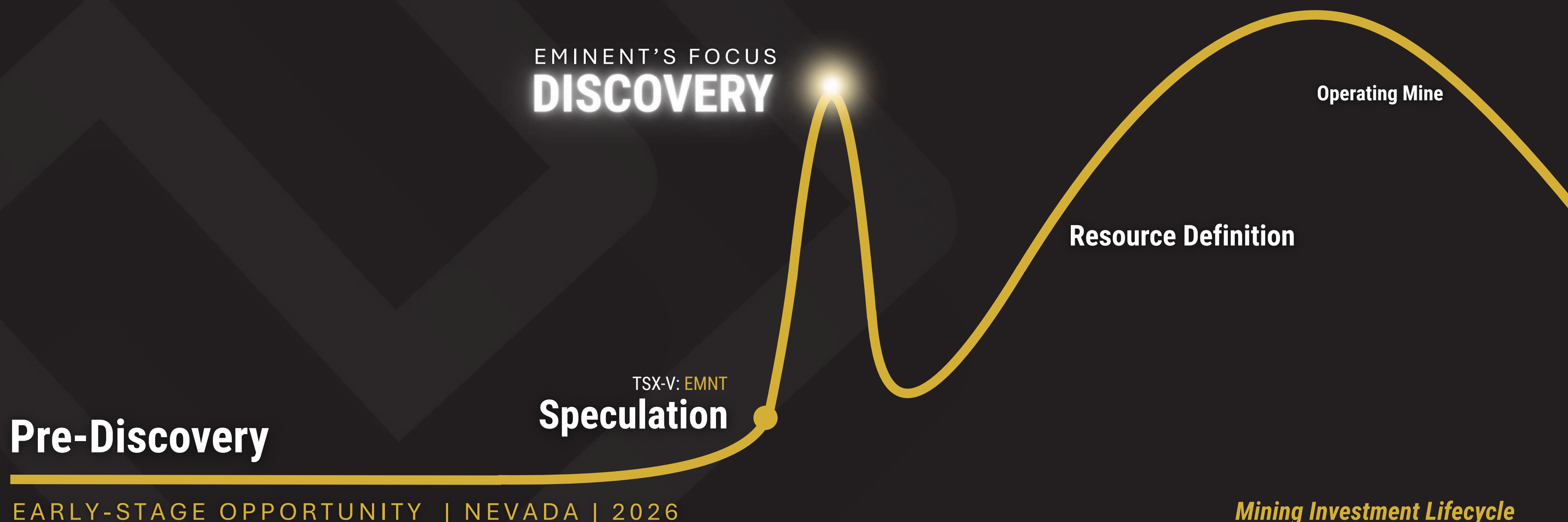
## Qualified Person

Michael Dufresne, P.Geo., a Qualified Person as defined by National Instrument 43-101, has reviewed and approved the technical content of this presentation.

# Discovery: The Most Lucrative Stage in Mining

## Eminent's Proven Team Tilts the Odds Toward Discovery

**18x return from discovery** — led by Dr. Dan McCoy  
*Keegan Resources 2008-2010*





# Three 100% Owned Projects Anchored in Nevada's Most Productive **Gold Corridors**

## Hot Springs Range Project (HSRP) | **Advancing Discovery**

Carlin-style system on Getchell analogue; **drilling underway**

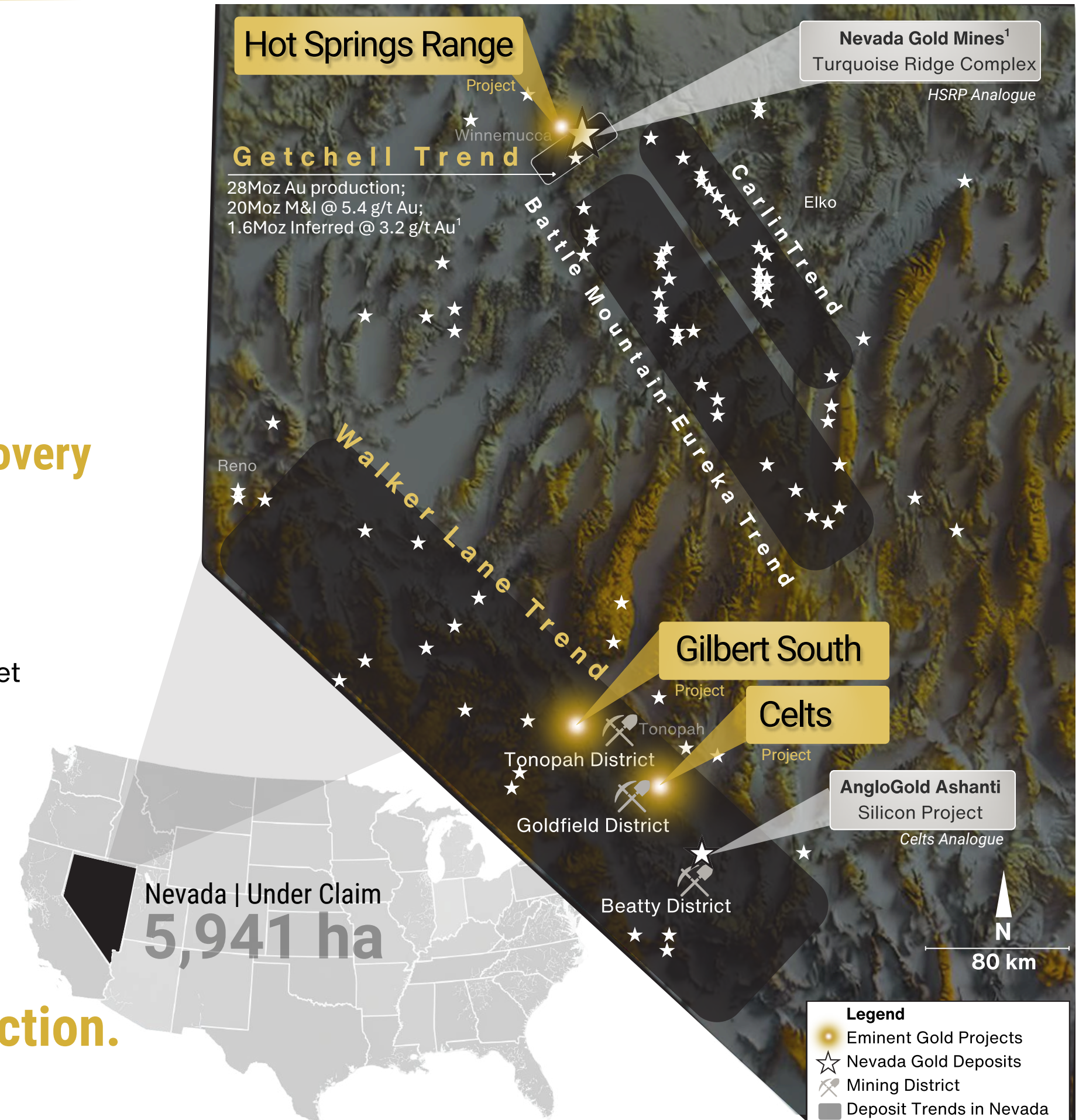
## Celts Project | **Silicon Analogue**

Silicon-style epithermal steam cap that seals a potential boiling zone target

## Gilbert South Project | **High-Grade Vein System**

High-grade vein system with an untested high-grade feeder

**The world's #2 most attractive mining jurisdiction.**





# Proven Discovery Team

## Team Behind a Major Gold Discovery and a Successful Exit



### Dan McCoy, PhD

**President, CEO & Director | Chief Geologist**

Over 4 decades in precious metals exploration with a proven record of discoveries and exits. Former CEO of Keegan Resources (5Moz Esaase discovery) and Chief Geo. at Cayden Resources (El Barqueño project acquired by Agnico Eagle).



### Ivan Bebek

**Strategic Advisor, Corporate Development & Finance**

Over 25 years' experience in financing exploration, foreign negotiations, and M&A, including President, CEO and Co-founder of Cayden (acquired by Agnico Eagle for C\$205M), Executive Chair of Auryn, and Co-founder of Keegan Resources.



### Martin Bajic

**CFO**

Chartered Professional Accountant with over a decade as CFO and director for TSX-V and CSE-listed juniors, including Vizsla Silver, Summa Silver, and other precious metals explorers.



### Jim Slayton

**Project Manager | Technical Team**

Nevada native with 4 decades of Great Basin exploration experience, including roles at Noranda. Former Project Manager at Keegan Resources' Esaase gold project (Ghana) and Cayden Resources.



### Michael Bebek

**Head of Communications**

Over 18 years in resource sector capital markets and corporate finance. Former Investment Advisor at Haywood Securities (junior miners focus) and Corporate Secretary for Keegan Resources.



### Board of Directors

Paul Sun | P.Eng, MBA, CFA

Daniel McCoy | PhD

Ann Carpenter | BSc Geology

Michael Kosowan | P.Eng



## 18X return

**KEEGAN RESOURCES | PRODUCING**

2008 - 2010 (now Galiano Gold)

**Daniel McCoy, PhD** President & CEO  
Discovery of over **5 million ounces**  
with favorable market conditions.



## 5X return

**CAYDEN RESOURCES | TAKEOVER**

May 2013 - September 2014

**Daniel McCoy, PhD** Chief Geologist  
100 discovery holes led to Agnico  
Eagle Mines takeover (**C\$205M**) in  
challenging market conditions.

**EMINENT GOLD**

Mgmt & Insiders ~42%

May 5, 2025

**Strategic | Kinross Acquires 9.9%**



# Hot Springs Range Project

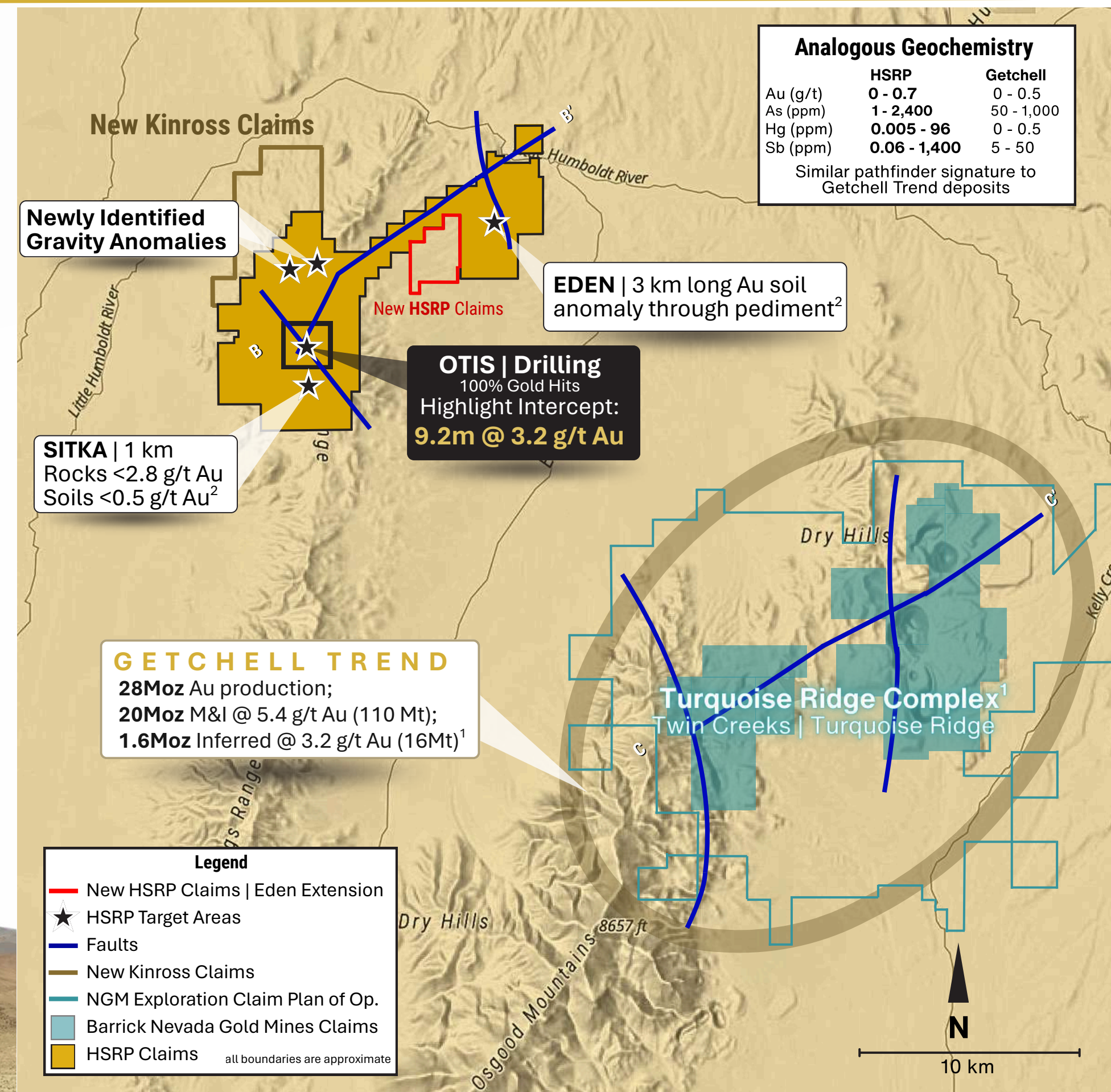
## New Carlin System Under Cover *Drilling Underway*

Hidden under shallow cover— never explored until now  
 10+ km Carlin-style corridor with Getchell-style signature  
 All holes hit gold — mineralization is widespread  
 Five untested targets — district-scale Carlin potential



**Same ground. Proven Neighbourhood.**

Currently Drilling | 4,311 ha | 100 % owned



<sup>1</sup> Turquoise Ridge Technical Report, Nevada Gold Mines, March 2024 (available at: <https://barrick.com/English/investors/default.aspx> or NGM site)  
 HSRP Source: <https://eminentgoldcorp.com/site/assets/files/5967/hotspringsrange-43-10120220808-final.pdf>



# Getchell Trend Structural Analogue

## Parallel Fault Controls to Nearby High-Grade Carlin-Type Deposits

Deep feeder structures intersect thrust faults — classic Carlin trap geometry

Cross-section shows scale and vertical architecture consistent with Getchell deposits




Breakthrough intercept confirms structural control — 9.2 m @ 3.2 g/t Au in HSC005

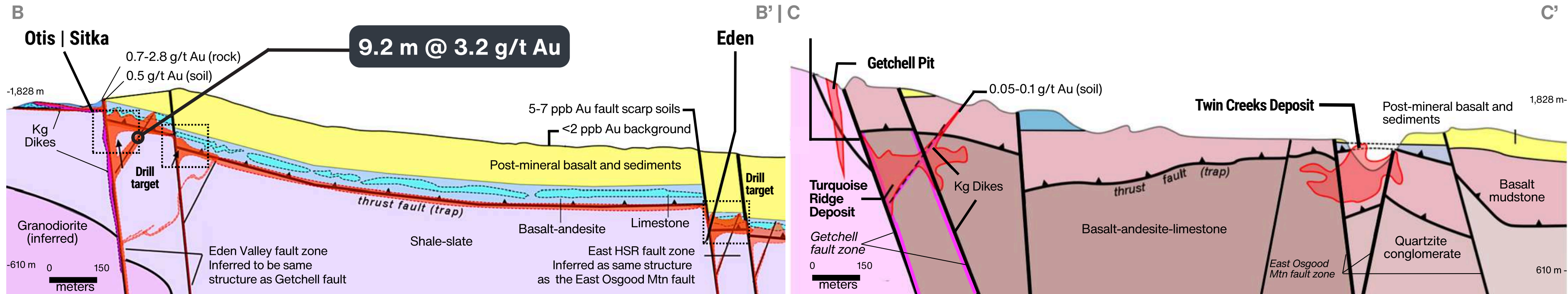
Ideal host rocks present for gold mineralization

### GETCHELL TREND

28Moz Au production;  
20Moz M&I @ 5.4 g/t Au (110 Mt);  
1.6Moz Inferred @ 3.2 g/t Au (16Mt)<sup>1</sup>

#### LEGEND

 Inferred mineralization  
 Thrust fault  
 Fault



HSRP INTERPRETIVE LONG SECTION | LOOKING NORTH

GETCHELL TREND LONG SECTION | LOOKING NORTH

<sup>1</sup> Turquoise Ridge Technical Report, Nevada Gold Mines, March 2024 (available at: <https://barrick.com/English/investors/default.aspx> or NGM site)

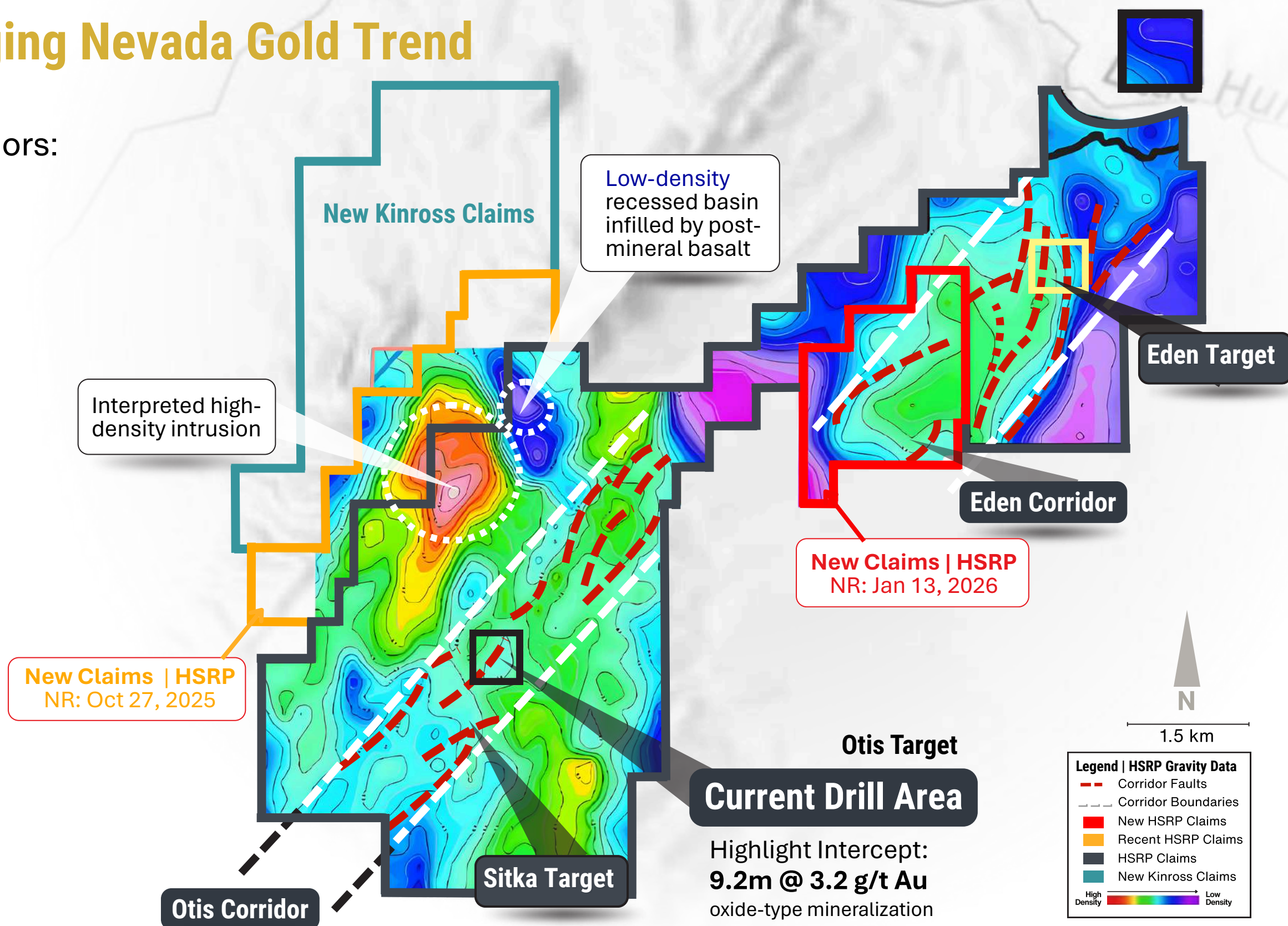
# Gravity Reveals Buried Carlin Corridors

## Strategic Staking Secures Emerging Nevada Gold Trend

Gravity reveals ~10 km of prospective corridors:  
Otis Corridor (6 km) + Eden Corridor (4 km)

High-density intrusions beside low-density basins — a key signature used to identify buried Carlin systems

New staking secures entire Eden anomaly



### Quick Gravity Survey Explainer

Gravity surveys detect density contrasts in subsurface rocks. Contacts between high- and low-density zones often highlight buried intrusions, faults, or alteration — prime targets for hidden gold mineralization under cover.



# Surface Gold Anomalies Confirm Key Targets

## Gold-in-Soil & Rock Anomalies Overlying Key Structures

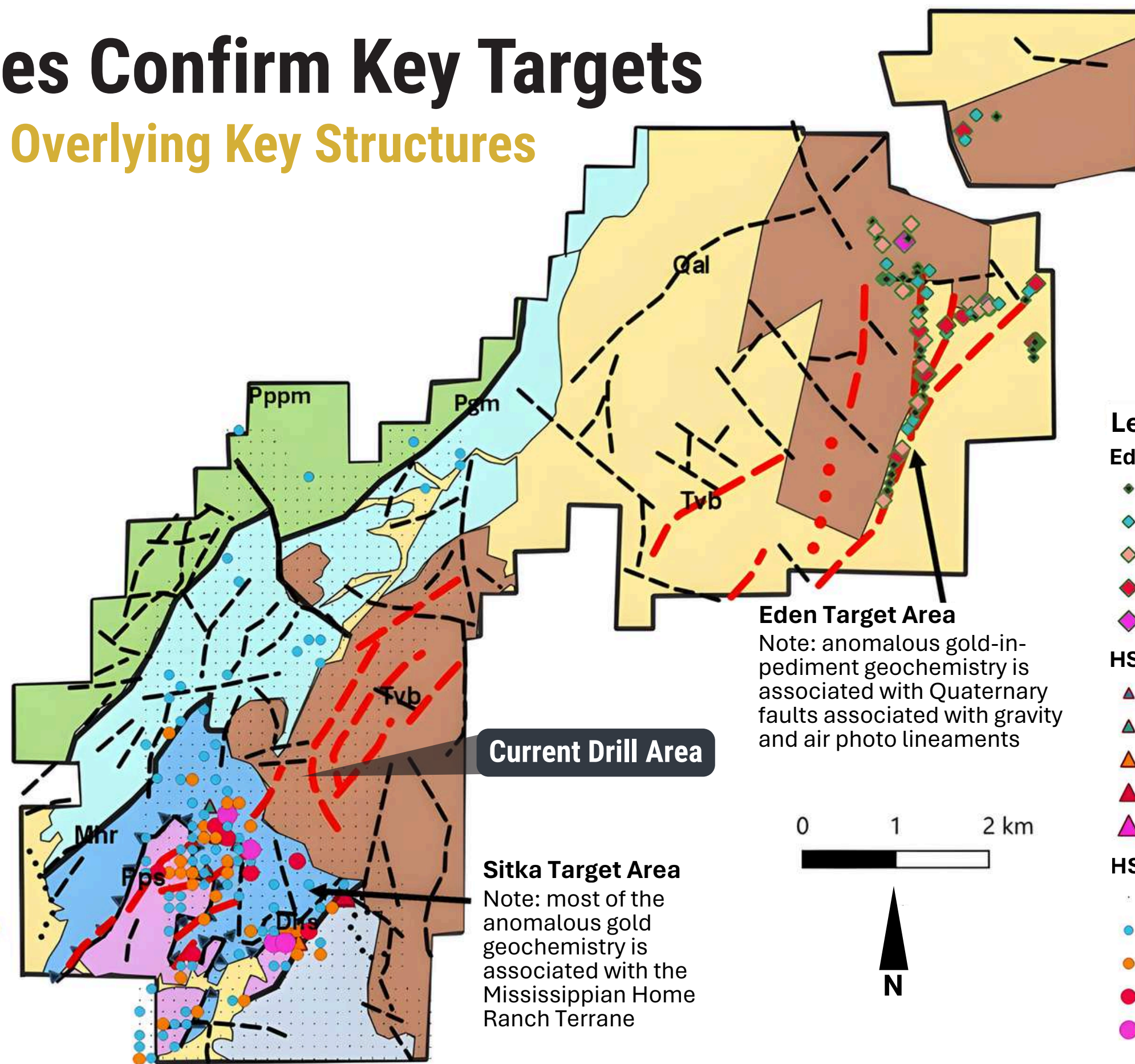
Strong surface gold anomalies

- soils up to 54.1 ppm Au
- rocks up to 2.85 g/t Au

Line up perfectly with key structures and favorable host rocks—direct evidence of a mineralized system at depth.

### Geology Legend

- LINEARS “Corridor” gravity-interpreted linears (thick red dashed lines) and other interpreted linears (black dashed lines)
- faults separating different lithotectonic terranes
  - ▲ thrusts separating Mhr above from Pps below
  - Tvb** Early Miocene Vesicular black aphanitic basaltic andesite
  - Qal** Undifferentiated Creek and Pediment Alluvium
  - Pppm** Permian Poverty Peak Melange: Basaltic Tuff and Argillite Matrix; Mafic Blocks
  - Pgm** Permian Golconda Melange: Quartzite-Sandstone; Chert Blocks
  - Mhr** Mississippian Home Ranch subterrane: andesite and limestone
  - Pps** Permian phyllite and slate
  - Dhs** Devonian sandstone



### Legend

#### Eden Soils (ppm Au)

- ◆ 0 - 0.81
- ◆ 0.81 - 1.37
- ◆ 1.37 - 2.23
- ◆ 2.23 - 4.71
- ◆ 4.71 - 7.04

#### HSRP Rock Chips (g/t Au)

- ▲ 0 - 0.05
- ▲ 0.05 - 0.25
- ▲ 0.25 - 0.512
- ▲ 0.512 - 0.77
- ▲ 0.77 - 2.85

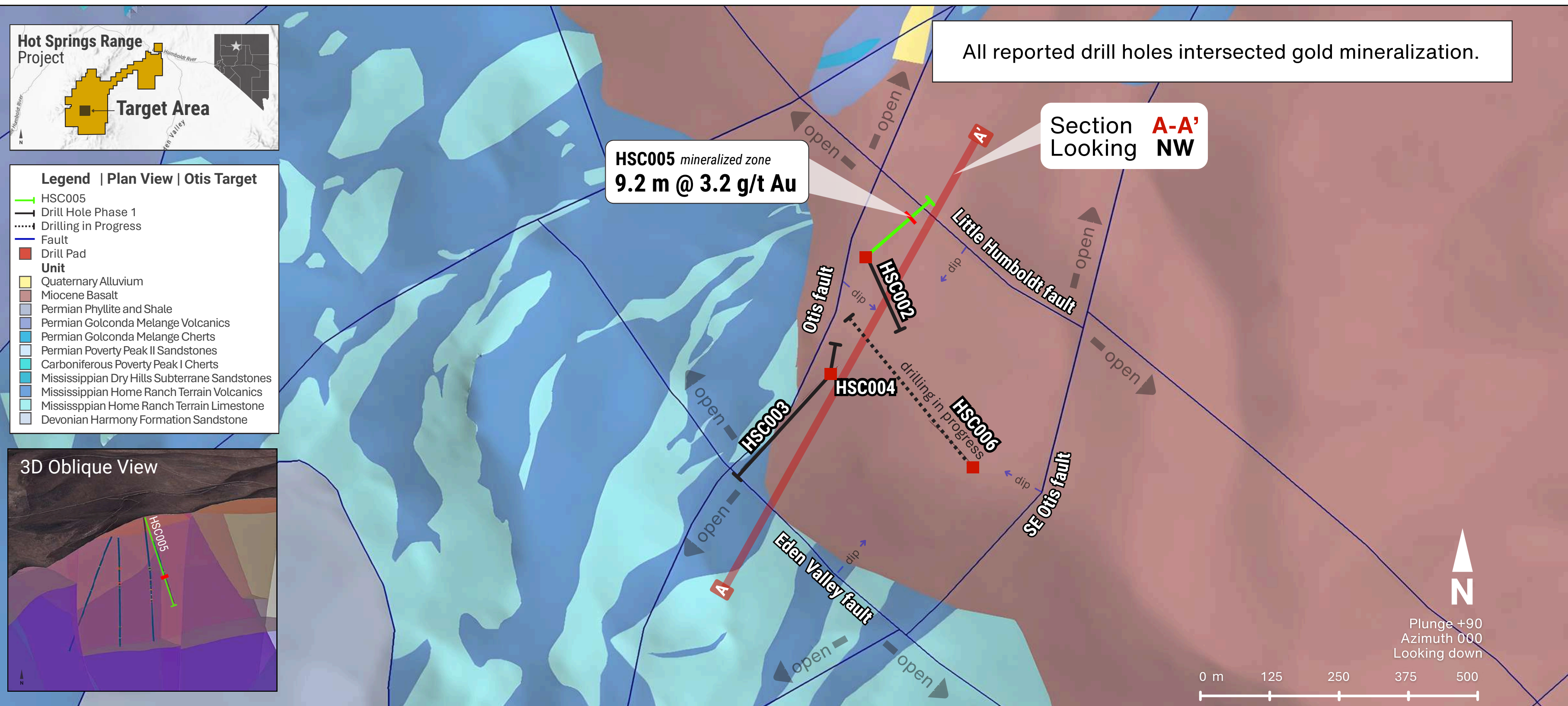
#### HSRP Soils (ppm Au)

- 0 - 2.6
- 2.6 - 6.9
- 6.9 - 13.2
- 13.2 - 28.3
- 28.3 - 54.1



# Otis Discovery Zone – High-Grade Hit, Open in All Directions

HSC005: 9.2 m @ 3.2 g/t Au – discovers new mineralized fault. Clear path to scaling the discovery.

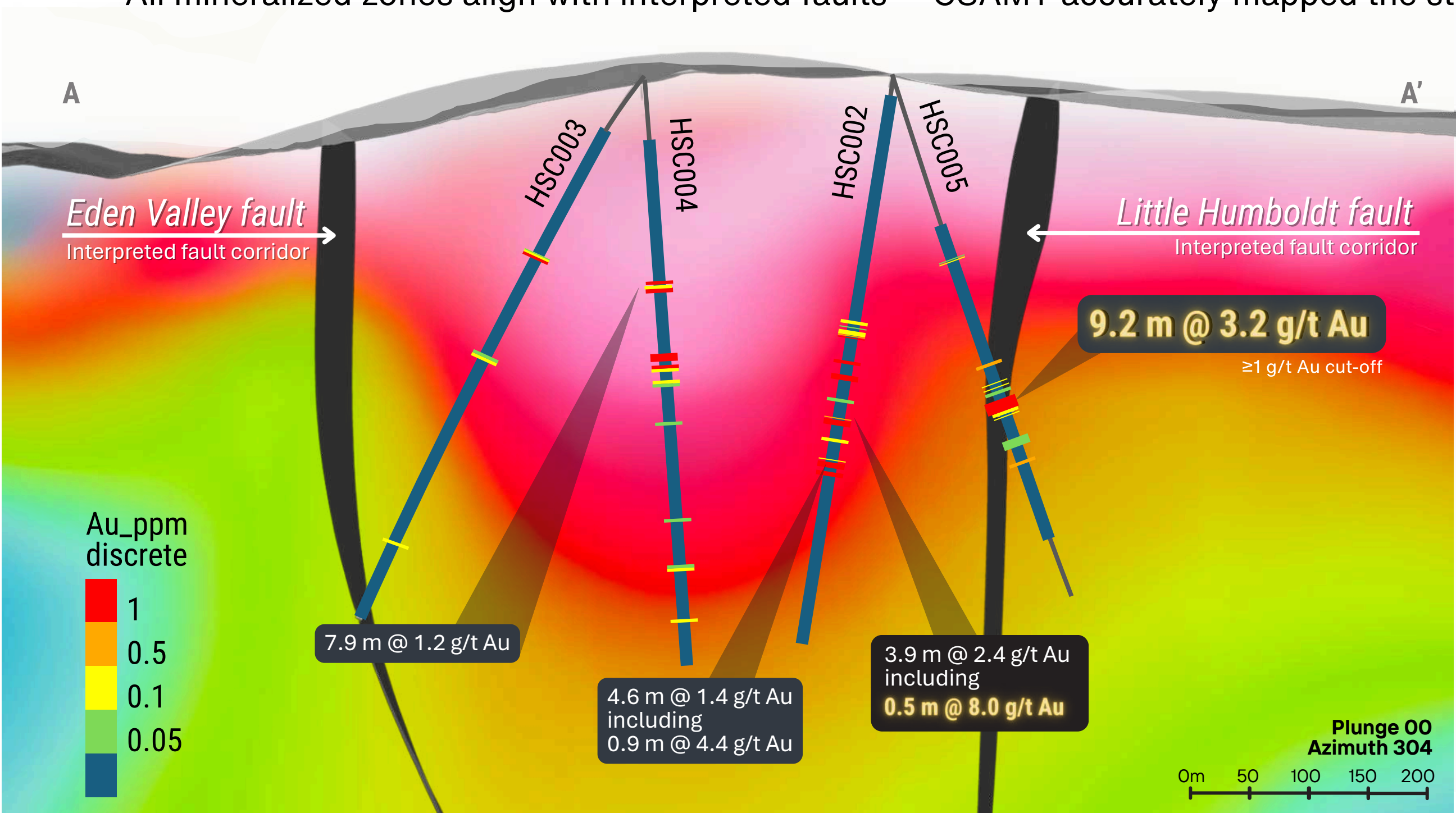




# All Tested Structures Returned Gold – Fault-Controlled System Confirmed

Cross-Section A-A' (Looking NW) – CSAMT Resistivity Overlay (No Vertical Exaggeration)

Up to 8 g/t Au intersected – system capable of delivering high-grade  
All mineralized zones align with interpreted faults – CSAMT accurately mapped the structures



Reported intercepts				
Hole ID	From (m)	To (m)	Width (m)	Au (g/t)
HSC002	272.8	275.7	2.9	2.2
HSC002	310.4	314.3	3.9	2.4*
			incl.	0.5m @ 8.0g/t Au
HSC002	347.1	351.7	4.6	1.4*
			incl.	0.9m @ 4.4g/t Au
HSC003	178.4	180.9	3.6	0.4
HSC004	178.6	186.5	7.9	1.2
HSC004	239.5	243.5	4.0	2.4
HSC004	250.9	254.2	3.3	0.5
HSC005	295.50	304.74	9.2	3.2 †
			incl.	0.9m @ 5.4 g/t Au
			incl.	1.1m @ 4.6 g/t Au

\* Included higher-grade sub-intervals within the reported composite intercept  
† Downhole widths reported; true widths estimated ≥60% for HSC005 based on structural indications. Other holes may vary.  
HSC006 in progress



# HSC005 Delivers Strong Continuity

## Consistent Oxide Gold in Ideal Host Rocks

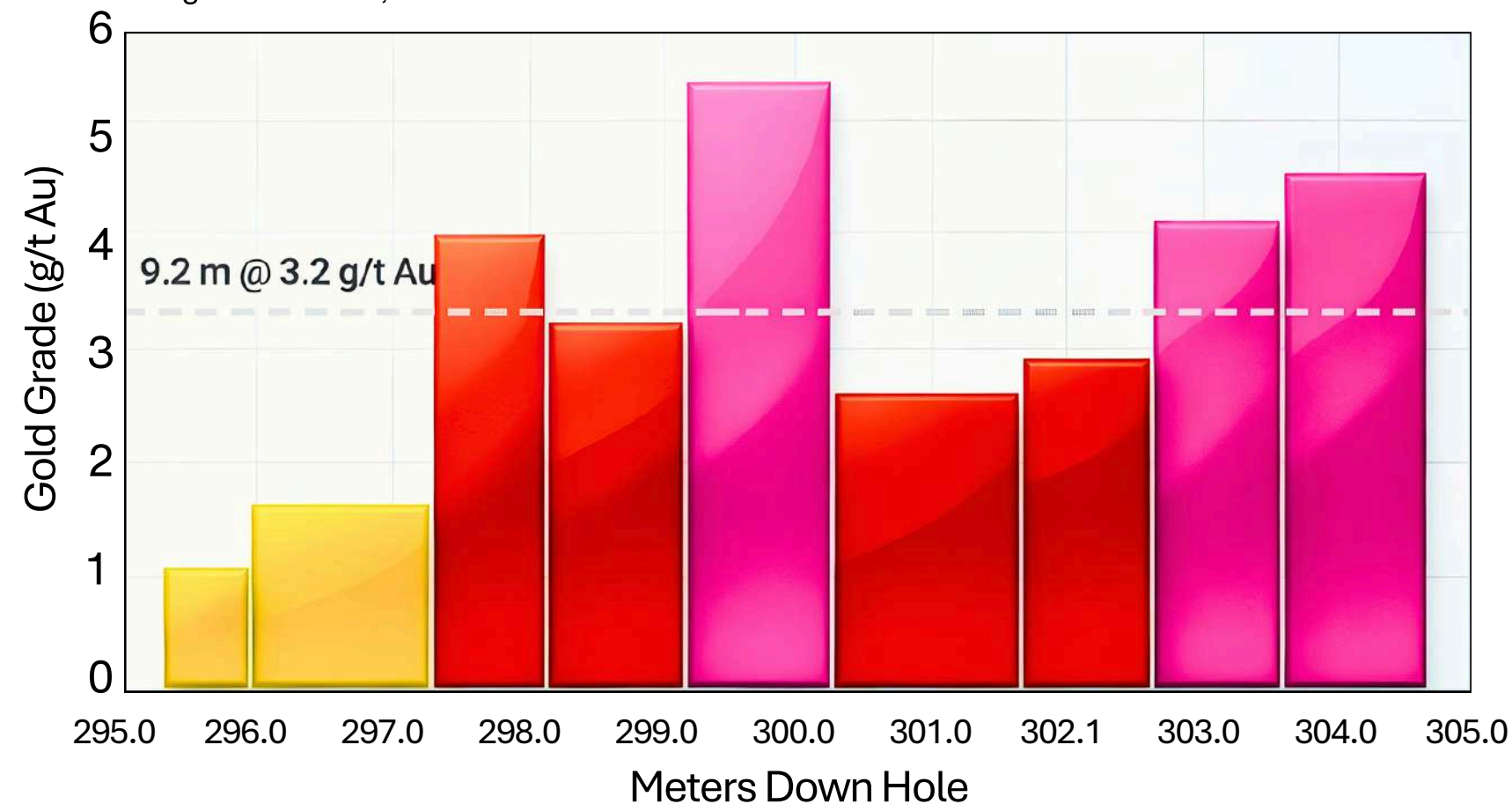
Consistent mineralization (see histogram)

Alteration patterns align with gold grades (see core photo)

Oxide host rocks—the most favorable conditions for low-cost mining

### HSC005 Down-Hole Gold Grades – High-Grade Zone

≥1 g/t Au cut-off, max 2 m internal dilution





# Celts | Silicon Analogue

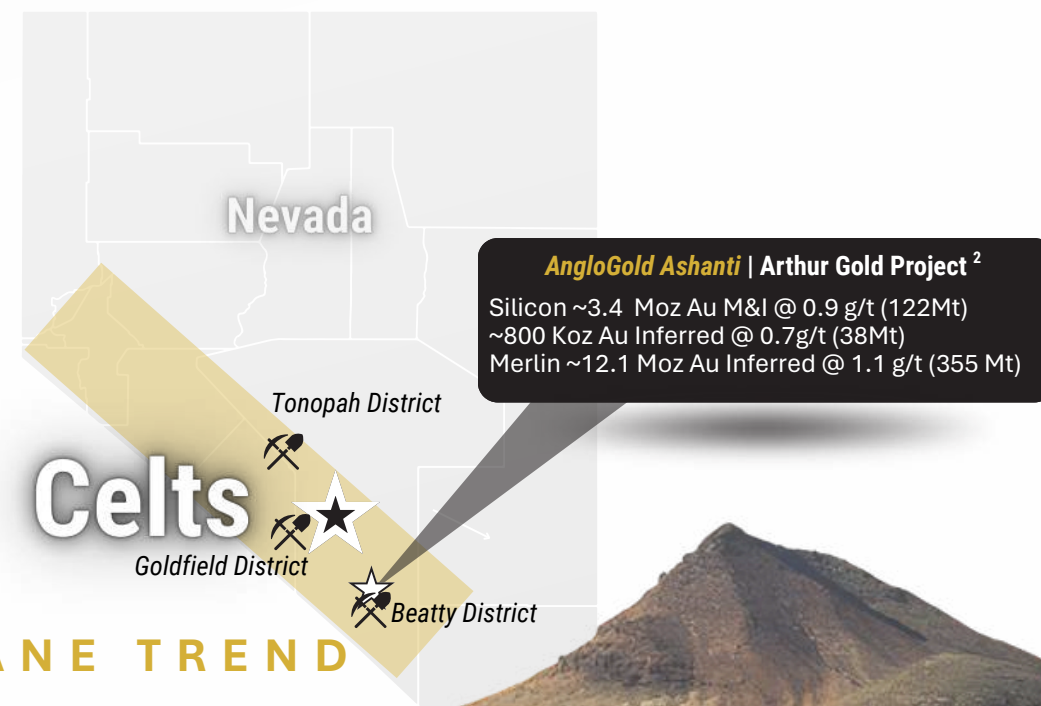
## Drill Ready

Same dome-hosted system

Target directly beneath the steam-cap

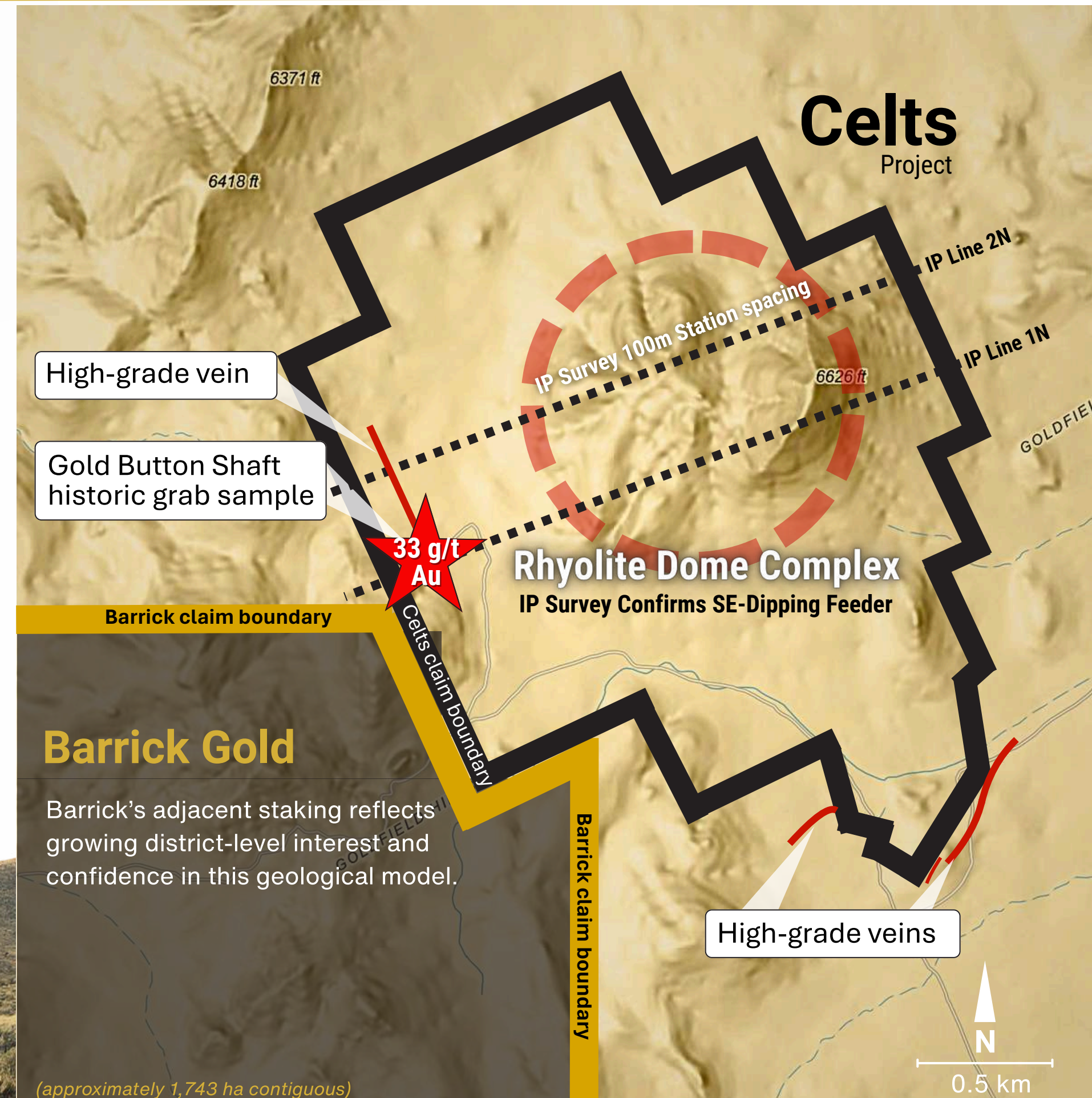
Identified as a Silicon analogue by same discovery team

Identical feeder geometry to Silicon's mineralized zone



## Rhyolite Dome Complex

Permitted & drill-ready | 560 ha | 100 % owned



<sup>2</sup>Silicon and Merlin resources: AngloGold Ashanti (effective Dec 31, 2024; disclosed Feb 19, 2025 via Orogen Royalties NR dated Feb 20, 2025)  
 Early-stage exploration; no mineral resource defined. Analogies based on geological similarities; see relevant press releases and technical reports for details.



# Celts vs. Silicon

## Cross-Section Analogue

*Silicon standalone resource: 4.22 Moz Au (3.4 Moz Indicated + 0.81 Moz Inferred, as of Dec 31, 2023; AngloGold Ashanti Technical Report Summary)*

Silicon's barren steam cap sits above a deeper gold zone—classic low-sulfidation

### Both systems

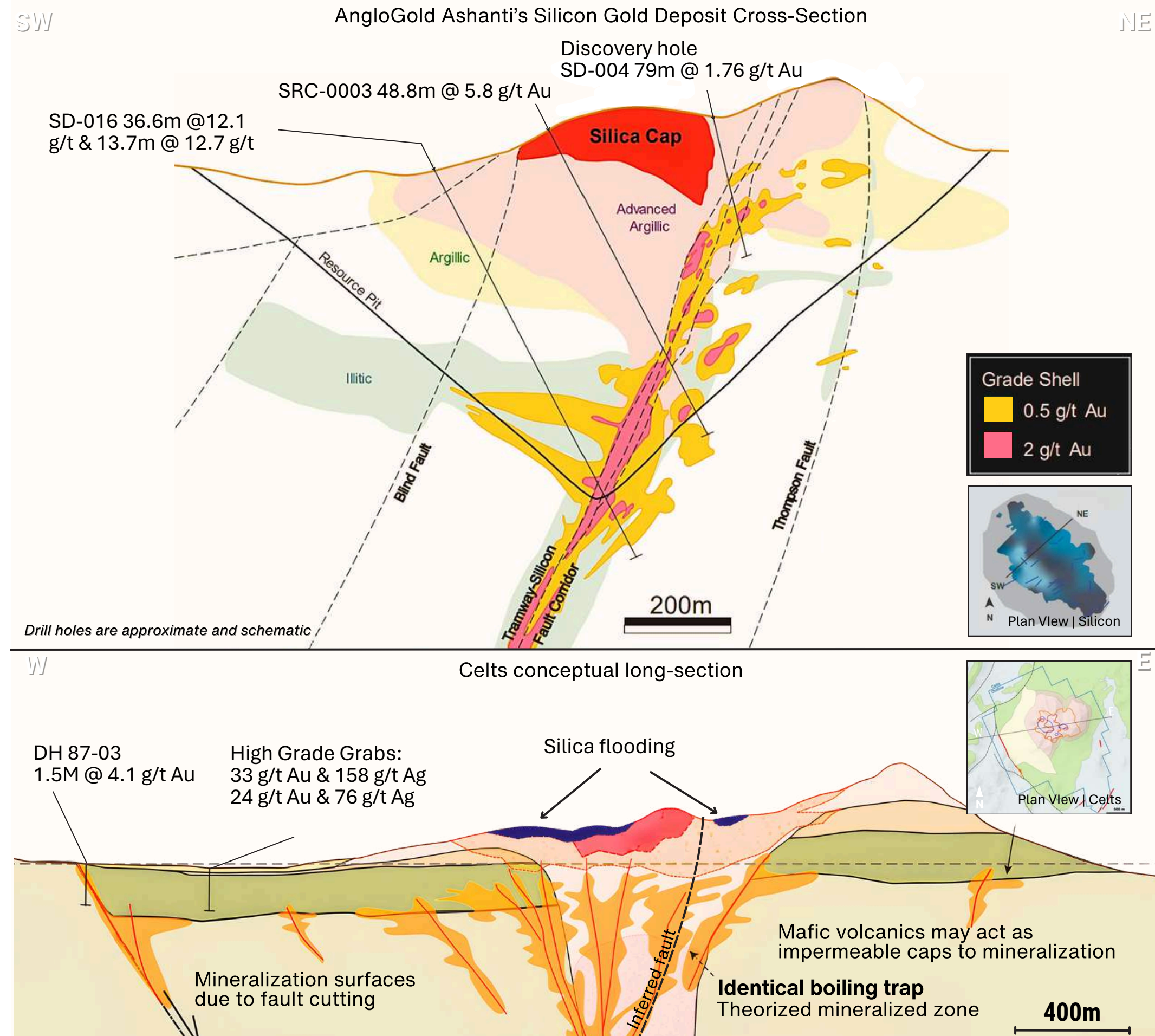
- Silica-rich steam caps with clay alteration
- Same dome geometry, alteration style, and age
- Same fault geometry beneath the dome

Gold may pool below a tight basalt layer, creating a trap for mineralization and high-grade veins peripheral to the steam cap at Celts support this model **(33 g/t Au & 24 g/t Au)**

### Target Concept

Our initial drill program follows AngloGold's discovery strategy—targeting the fault beneath the steam cap

QP has not verified Silicon data; Celts model conceptual. Source: AngloGold Ashanti Silicon Project technical report summary. Celts model conceptual.





# Gilbert South | Untested at Depth

## Widespread High-Grade Surface Samples

Past shallow drilling targeted near-surface oxide — deeper high-grade feeder structures remain untested

Drill-ready opportunity to explore for high-grade epithermal gold beneath well-defined vein system

Multiple epithermal vein corridors (1.5–2.5 km strike) with surface samples up to 31 g/t Au; historic values reported to 143 g/t Au

WALKER LANE TREND

**Gilbert South**

42 km west of Tonopah

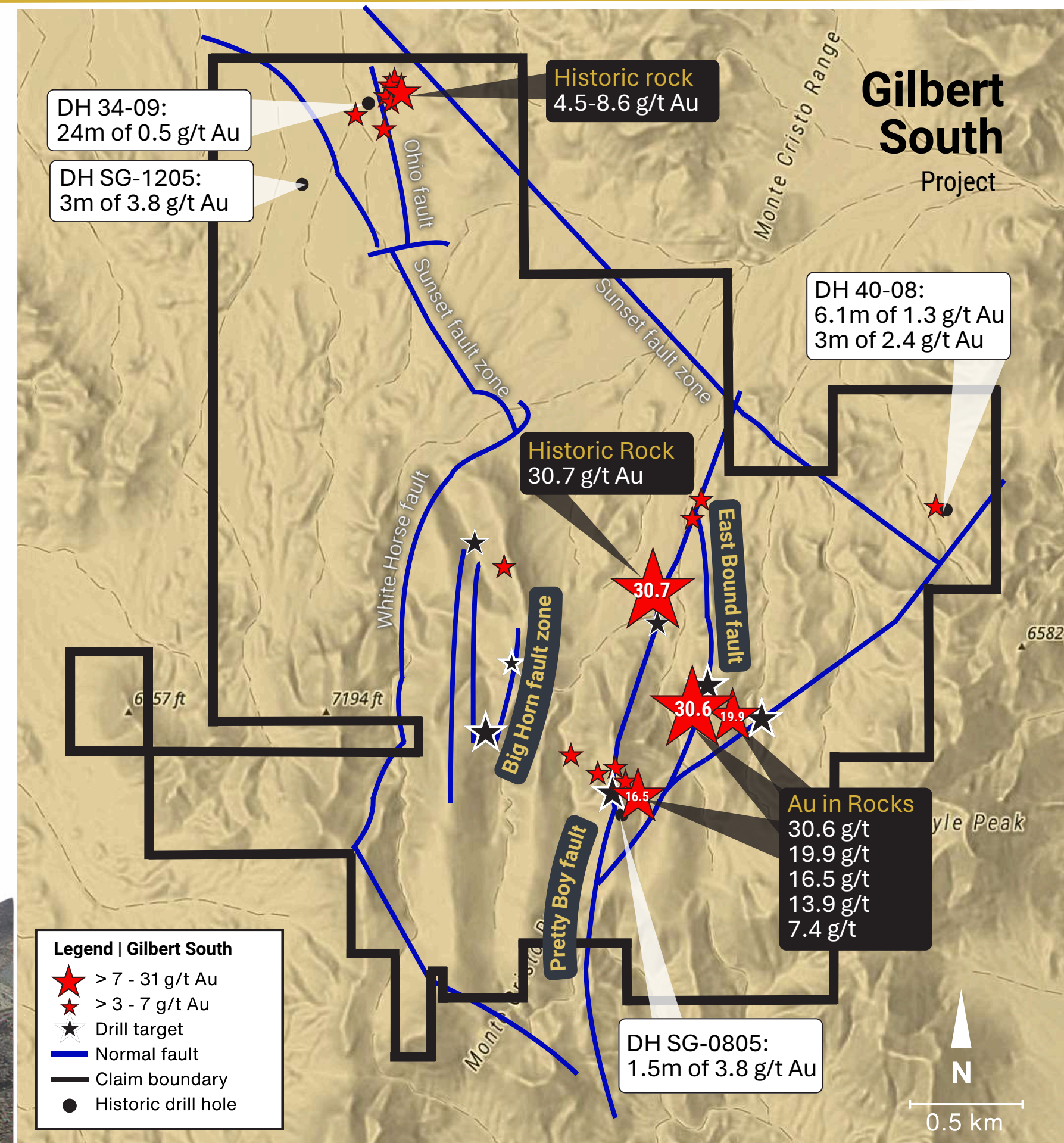


Tonopah District

## Three Targets

**Pretty Boy | Big Horn | East Bound**

Permitted & drill-ready | 1,070 ha | 100 % owned





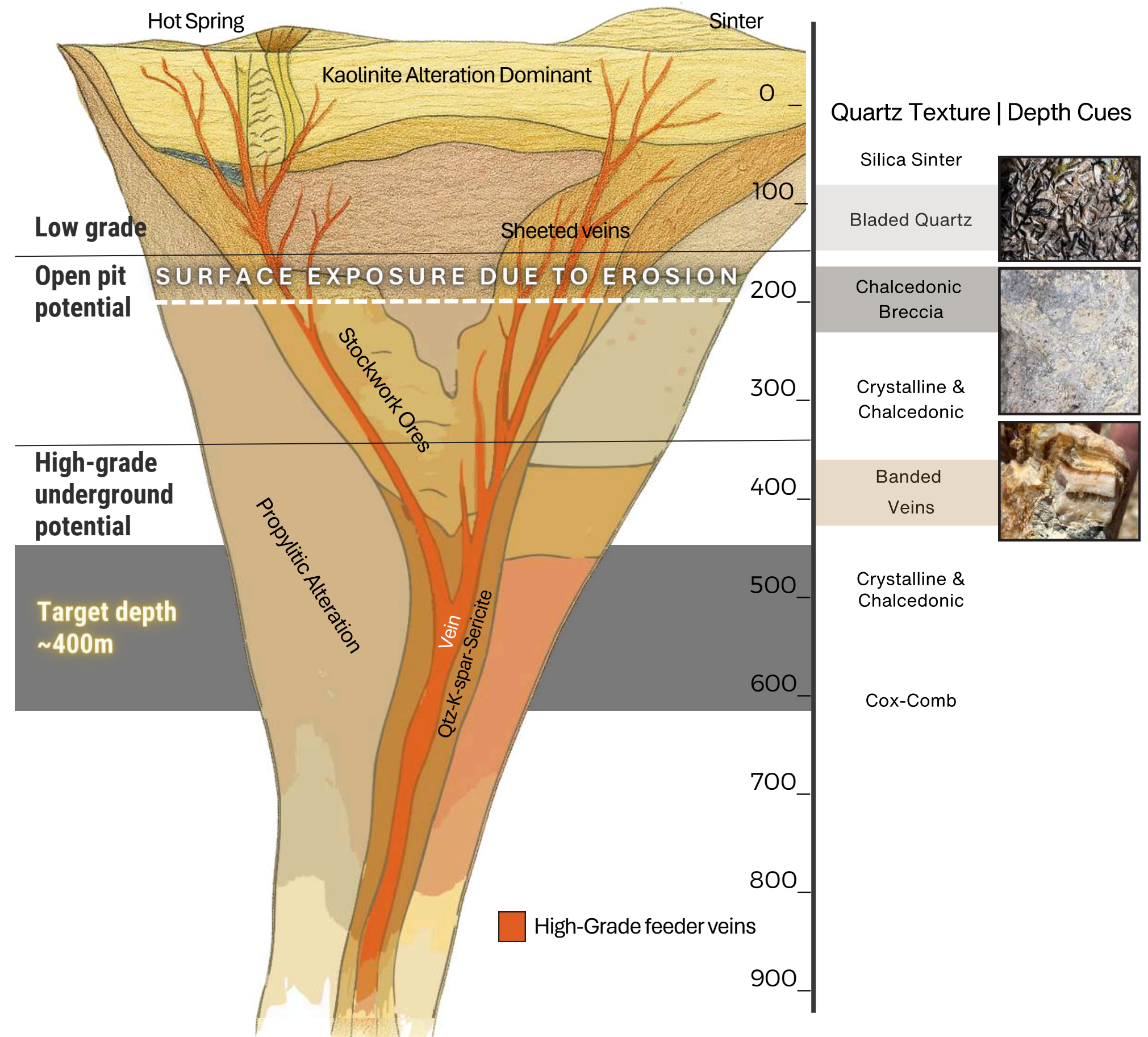
# Eroded Epithermal System

## Feeder Target Now Near Surface

Surface textures and mapped veins indicate erosion to high-grade horizon

Drill program designed to test feeder zone

See (photo) for example of surface vein sets





# Near Term Catalysts

## 2025 Achievements

### Technical Breakthroughs — Validating a District-Scale System

- Significant oxide intercepts in all maiden HSRP core holes
- *Up to 8 g/t Au — (confirms Carlin-style mineralization)*
- District-wide gravity survey completed *(Defined a 10 km structural corridor)*

### Strategic Land & Target Expansion

- HSRP land position expanded *(Secured newly defined gravity targets)*
- Celts Project acquired *(IP confirms Silicon-analogous structural architecture)*

### Corporate Strengthening & Alignment

- *Kinross invests ~9.9% (Strategic validation and long-term alignment)*
- 2025 data integrated into new targeting model *(Gravity, IP, and core data)*

## 2026 H1 — What's Next

### Q1 2026 — Technical Validation & Leadership

- Follow-up on 9.2 m @ 3.2 g/t Au intercept *(System validation and vectoring)*
- CEO transition to Dr. Dan McCoy *(40+ years of discovery experience)*
- Eden anomaly staking finalized *(Gravity-defined expansion secured)*
- Otis RC drilling initiated *(Systematic testing of fault zones + oxide extensions)*
- Exploration progress on other Projects

### Q2 2026 — District-Scale Expansion & Corporate Strengthening

- Expanding BLM permits for additional targets *(second RC rig planning)*
- Board & technical team additions *(Strengthening discovery + capital markets depth)*
- Integrated CSAMT + drilling interpretation *(Refining targets for H2 2026)*
- RC drilling expands across 10+ km corridor *(District-scale evaluation begins)*



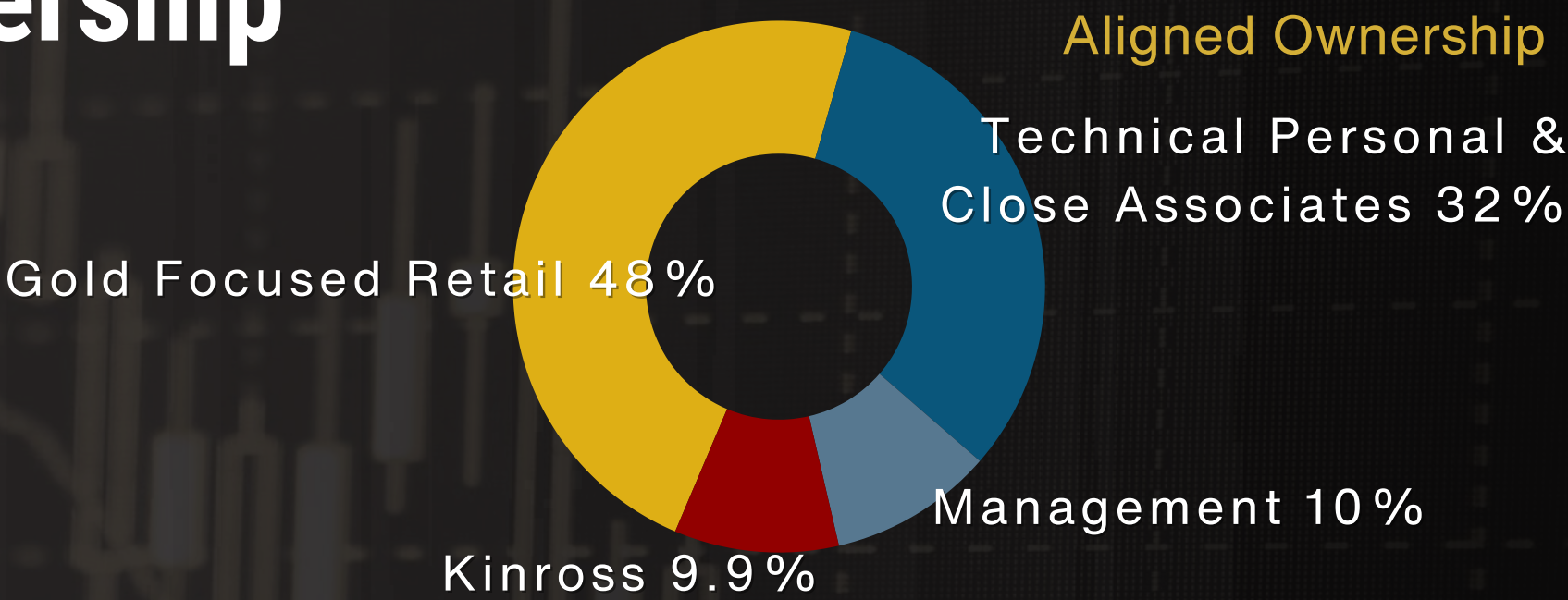
**Accelerating Discovery**  
**Driving Value Across Exploration  
& Corporate Milestones**

**Capital Allocation: 80 % Exploration | 15 % G&A/marketing | 5 % Working capital**

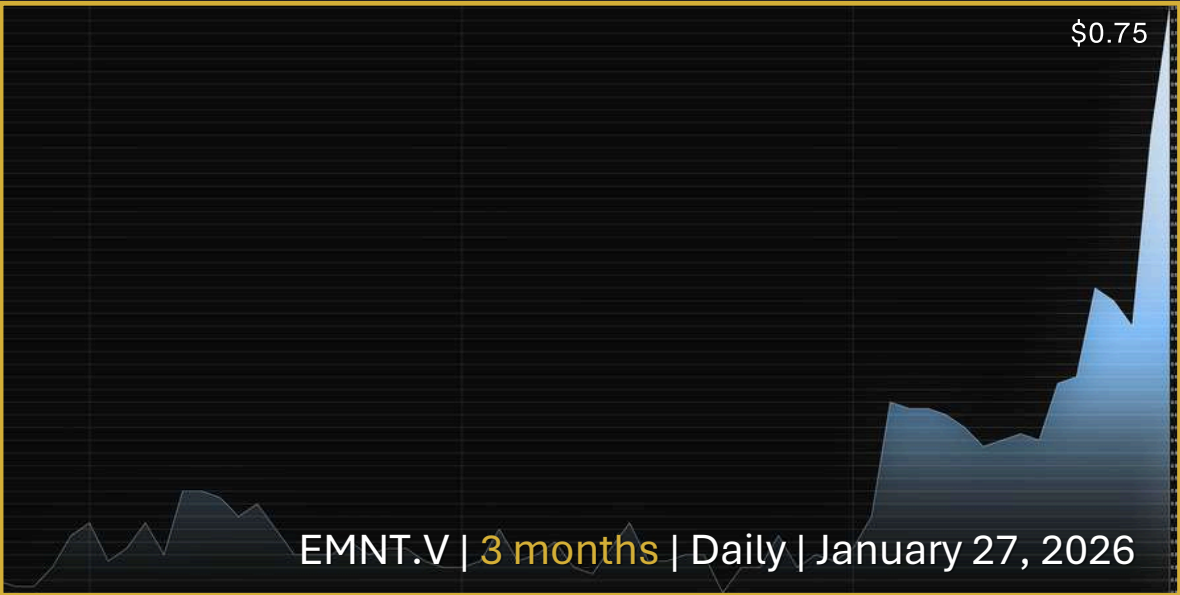


# Capital Structure & Strategic Ownership

Issued & Outstanding	78,022,194
Options	6,025,000
Warrants	19,051,296
Fully Diluted	103,098,490
Market Cap.	~\$55M



**Kinross Gold Corp. 9.9%**  
**Management / Insiders & Close Associates ~42%**



Warrants Outstanding		
Expire	Price	Amount
Jul 25, 2026	\$0.50	2,016,600
Sept 29, 2026	\$0.50	1,931,250
Aug 30, 2026	\$0.55	4,936,862
Oct 15, 2026	\$0.55	4,404,423
May 2, 2027	\$0.70	5,762,161

Options Outstanding		
Expire	Price	Amount
Mar 18, 2026	\$0.79	150,000
Jun 30, 2026	\$0.95	150,000
Nov 11, 2026	\$0.75	950,000
April 3, 2029	\$0.32	500,000
Dec 31, 2029	\$0.45	1,350,000
Oct 9, 2030	\$0.35	2,925,000

Prior Financings		
Date	Price	Amount
Sept 2019	\$0.10	\$735k
Jun 2020	\$0.20	\$3.1M
Sept 2021	\$0.70	\$2.2M
Sept 2022	\$0.45	\$1.4M
Sept 2023	\$0.32	\$965k
Oct 2024	\$0.26	\$2.4M
May 2025	\$0.40	\$4.3M



# Opening the Door to a Major Carlin Gold Discovery

## Investment Thesis

### Peer Precedent & Re-rating Potential

Early-stage Nevada discoveries deliver **3–8×** re-ratings on follow-up — 10km multi-target confirmation could drive **25–50×** potential.

*Great Bear as a precedent for discovery-driven re-ratings: Delivered a multi-tens-of-times re-rating (~50×+) as scale and continuity were confirmed.*

## Subscribe



- Early-Stage Entry
- Exceptional Leverage
- Elite Jurisdiction
- Proven Leadership
- Strategic Alignment
- Macro Tailwinds

## DISCOVERY

1-604-505-7751 | [info@eminentgoldcorp.com](mailto:info@eminentgoldcorp.com) | [www.eminentgoldcorp.com](http://www.eminentgoldcorp.com)

**EARLY-STAGE OPPORTUNITY | NEVADA | 2026**





# PURSuing MAJOR GOLD DISCOVERIES

IN THE GREAT BASIN

## Appendix



### Hot Springs Range Project | Flagship

Eminent holds 100% interest in 521 claims totaling >4,311 hectares at HSRP.

**Fully Executed Definitive Agreement**

Under the terms of the previous option Agreement, the Company had up to five years to acquire a 100% interest in the Property by making cumulative cash payments of USD \$136,140 and cumulative share payments of 1,650,000 common shares in the capital of the Company, followed by a \$1,500,000 payment payable in cash or common shares at the option of the Company. The Company completed the terms of this agreement in April of 2025

Net Smelter Royalty of 2% which the Company may purchase in 0.1% increments for USD\$100,000 for each increment up to maximum of 1%



### Celts Project

Eminent holds 100% interest consisting of 67 unpatented mining claims on BLM ground (560 hectares). Located 13 kilometers northeast of Goldfield.

**Fully Executed Definitive Agreement**

Total Payment: US\$400,000 - At Closing:

- US\$30,000 in cash
- US\$45,000 in Eminent common shares

Within Six Months of Closing: US\$325,000 in cash or Eminent common shares (at Eminent's discretion, subject to regulatory approval)

Property Claims: 3% net smelter return (NSR) royalty with option to repurchase 1% of the royalty for US\$1.5 million (reducing the NSR to 2%)

Proceeds Split: US\$200,000 in cash and/or shares to each Orogen and a subsidiary of Altius Minerals Corporation ("Altius")



### Gilbert South Project

Eminent holds 100% interest in the 110 unpatented claims (1,070 hectares) located 42 km west of Tonopah in the Walker Lane trend, Nevada.

**Fully Executed Definitive Agreement**

By way of Consideration, the Company issued 350,000 common shares to the Seller. An additional 200,000 common shares will be issued when the company initiates a drill program.

The Timberline claims are currently subject to a 3% net smelter return royalty, the Nevada Select claims are currently subject to a 2% net smelter return royalty, and the GL claims are currently subject to a 2.25% net smelter return royalty. Eminent shall have the option and right to repurchase 1% of the GL royalty for \$1 million (U.S.). The Seller shall have the option to buy down 1% of the Timberline net smelter return for \$1.5 million (U.S.).

### Glossary: Key Technical & Industry Terms

**Carlin-Style Gold System**

Sediment-hosted gold deposits typical of Nevada, characterized by fine-grained, disseminated gold associated with deep crustal structures and hydrothermal alteration. Often found in large, district-scale structural corridors.

**Epithermal System**

A shallow-level hydrothermal gold system formed at low temperatures and pressures. These systems can produce high-grade veins or disseminated oxide gold near surface. Oxide vs. Sulfide Mineralization

**Oxide:** Near-surface, weathered material where gold is liberated from sulfides, often more amenable to simple extraction methods.

**Sulfide:** Deeper, unweathered material where gold is locked in sulfide minerals, typically requiring more complex processing.

**CSAMT (Controlled-Source Audio-Frequency Magnetotellurics)**

A geophysical method used to map subsurface resistivity. In exploration, it helps identify faults, fluid pathways, and structural zones that may host gold mineralization.

**Gravity Survey**

A geophysical technique measuring variations in the Earth's gravitational field to identify density contrasts. Useful for mapping basin geometry, structural corridors, and potential feeder zones.

**RC Drilling (Reverse Circulation)**

A drilling method that produces rock chips rather than core. It is fast and cost-effective for testing structures, faults, and oxide extensions across large corridors.

**Core Drilling**

A drilling method that retrieves intact cylindrical rock samples ("core"). Provides detailed geological, structural, and mineralogical information used for system validation.

**NSR (Net Smelter Return) Royalty**

A royalty paid to the property owner based on a percentage of the revenue from the sale of mined material, after smelting and refining costs. Many of your projects include NSRs with partial buy-down options.

**Earn-In Agreement**

A staged acquisition structure where the company can earn up to 100% ownership of a project by completing specified cash payments, share issuances, and/or exploration milestones over time.

**Structural Corridor**

A major fault-controlled zone that acts as a conduit for mineralizing fluids. Your deck references a 10 km gravity-defined corridor at HSRP.

**Targeting Model**

An integrated interpretation combining geophysics (gravity, IP, CSAMT), drilling, and geological mapping to refine drill targets and vector toward higher-grade zones.