



EMINENT GOLD

PURSUING MAJOR GOLD DISCOVERIES IN THE GREAT BASIN



Investor Presentation - June 2026
TSX-V: EMNT | OTCQB: EMGDF | FSE: 7AB

Disclaimer

Cautionary Statement

This presentation has been prepared by Eminent Gold Corp. (the “Company”) for general informational and marketing purposes only. It is a high-level summary and does not contain all information that may be material to an investment decision. Readers are encouraged to review the Company’s continuous disclosure filings on SEDAR+ (www.sedarplus.ca) for complete technical and corporate information.

Forward-Looking Information

Certain statements in this presentation constitute forward-looking information under applicable securities laws. These statements involve known and unknown risks, uncertainties, and other factors that may cause actual results to differ materially from those anticipated. The Company undertakes no obligation to update forward-looking information except as required by law.

Mineral Disclosure

Mineral resources that are not mineral reserves do not have demonstrated economic viability. Canadian disclosure standards differ from those in other jurisdictions, including the United States.

Qualified Person

Michael Dufresne, P.Geo., a Qualified Person as defined by National Instrument 43-101, has reviewed and approved the technical content of this presentation.

Classic 30-Year Gold Seasonal Average

Bullish Fundamentals Unchanged

Current pullback:

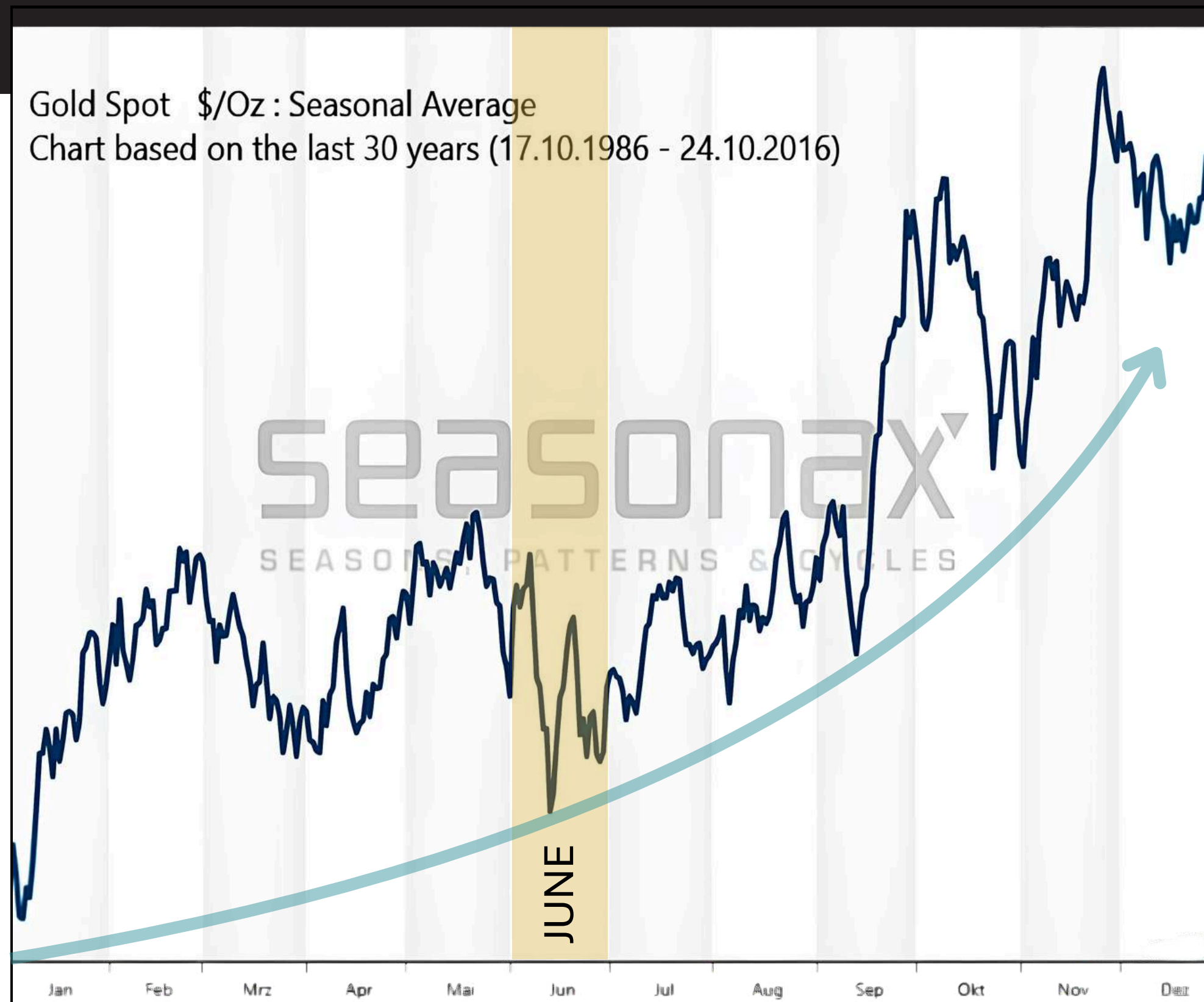
- Technical correction after parabolic 2025 rally
- Classic profit-taking and position squaring

Fundamental drivers haven't changed:

- Central banks continue aggressive buying
- Represents ~25–30% of annual global mine supply with no signs of slowing

Persistent macro tailwinds :

- Record global debt, de-dollarization, and geopolitical uncertainty remain firmly in place



A Discovery-Focused Team with a Proven Track Record

Eminent Leadership

Discovery of over 5 Million Ounces Gold



Dr. Dan McCoy
President & CEO



Ivan Bebek
Strategic Advisor

Acquired by Agnico Eagle Mines



KEEGAN RESOURCES

Ivan Bebek, Co-Founder & Lead Financier
Dr. Dan McCoy CEO & Chief Geologist

CAYDEN RESOURCES

Ivan Bebek, CEO & Co-Founder
Dr. Dan McCoy Chief Geologist

Seasoned Management

Elite Exploration Team Executing District-Scale Nevada Gold Opportunities



Dan McCoy, Phd

President, CEO & Director | Chief Geologist

Over 4 decades in precious metals exploration with a proven record of discoveries and exits. Former CEO of Keegan Resources (5Moz Esaase discovery) and Chief Geo. at Cayden Resources (El Barqueño project acquired by Agnico Eagle).



Ivan Bebek

Strategic Advisor, Corporate Development & Finance

Over 25 years' experience in financing exploration, foreign negotiations, and M&A, including President, CEO and Co-founder of Cayden (acquired by Agnico Eagle for C\$205M), Executive Chair of Auryrn, and Co-founder of Keegan Resources.



Justin Milliard, Phd

VP Exploration

Over 20 years in Nevada-focused gold exploration with deep expertise in Carlin-type systems. Former Principal Geologist at AngloGold Ashanti and Senior Exploration Geologist at Eminent, where he originated the Hot Springs Range discovery.



Martin Bajic

CFO

Chartered Professional Accountant with over a decade as CFO and director for TSX-V and CSE-listed juniors, including Vizsla Silver, Summa Silver, and other precious metals explorers.



Michael Bebek

Head of Communications

Over 18 years in resource sector capital markets and corporate finance. Former Investment Advisor at Haywood Securities (junior miners focus) and Corporate Secretary for Keegan Resources.



Jim Slayton

Project Manager | Technical Team

Nevada native with 4 decades of Great Basin exploration experience, including roles at Noranda. Former Project Manager at Keegan Resources' Esaase gold project (Ghana) and Cayden Resources.

Nevada Discovery-Driven World's #2 gold mining jurisdiction²

Hot Springs Range Project (HSRP)

Emerging district-scale gold discovery | Getchell Trend analogue

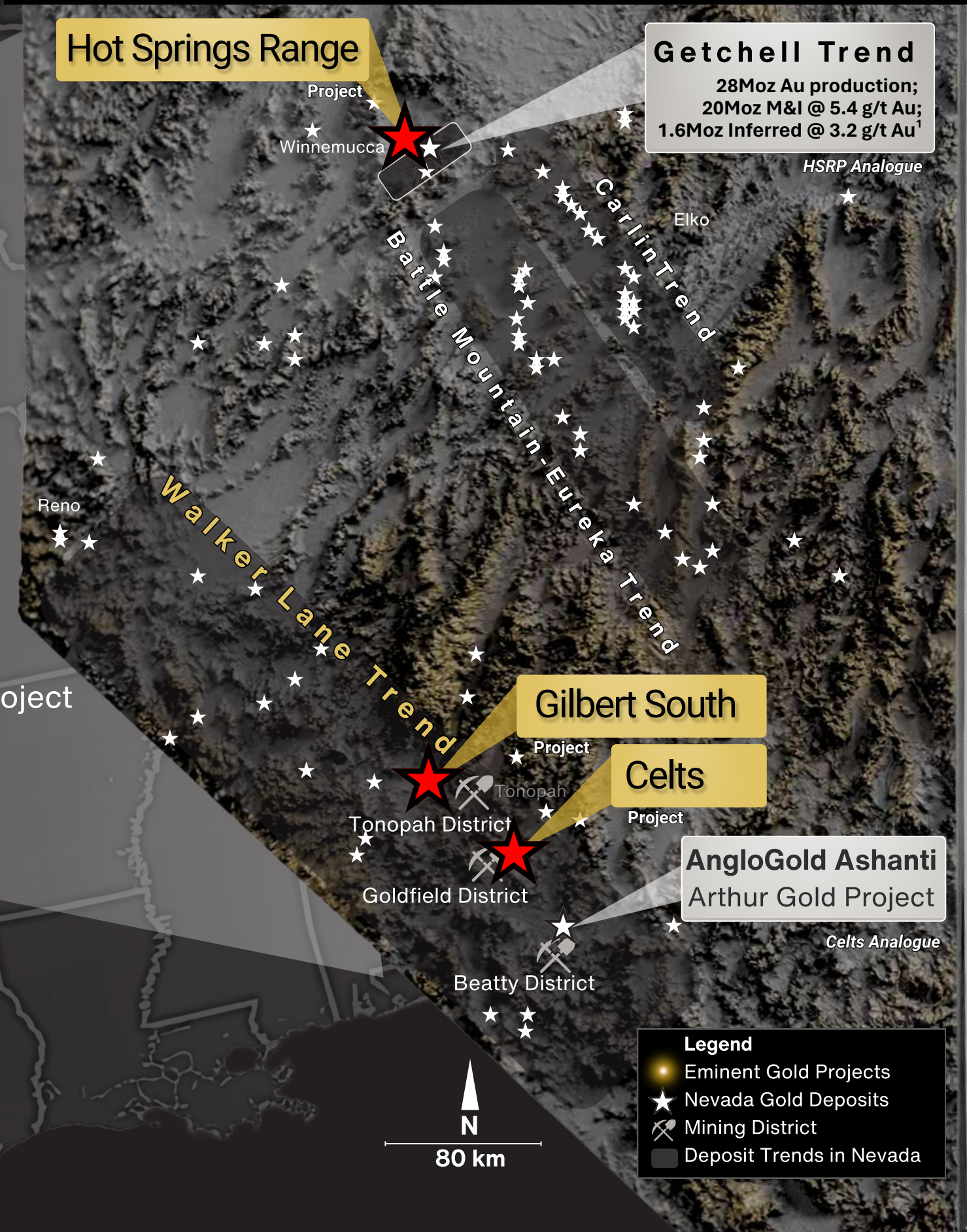
Celts Project

Shares key structural and stratigraphic features with the Arthur Gold Project

Gilbert South Project

Targeting the source of a high-grade gold vein system

3 Projects | 5,941 ha | 100% Ownership | Permitted



¹ Turquoise Ridge Technical Report, Nevada Gold Mines, March 2024 (available at: <https://barrick.com/English/investors/default.aspx> or NGM site)
Source: Fraser Institute 2024

Why Carlin Systems Stand Out

Defining Nevada's Gold Dominance

- ~70%⁵ of U.S. gold production comes from Nevada — most of it originates from this district
- Carlin systems cluster along major structural trends — rarely isolated
- Nevada produces ~3 Moz/year — the highest rate of any gold jurisdiction globally



Goldstrike Complex

has produced approximately
~44 Moz Au historically³

Pipeline Complex

has produced approximately
~21 Moz Au historically⁴

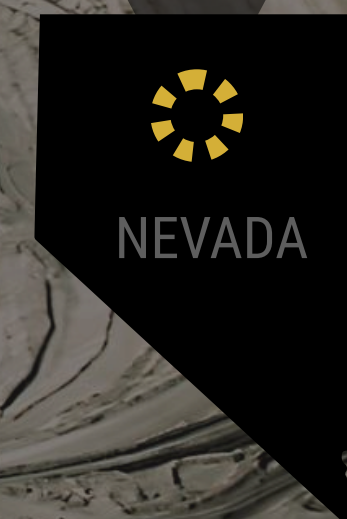
Carlin-type deposits are prized for their large, continuous ore bodies and exceptional production histories

SULPHIDE
OXIDE

Ave. processed grades
~3 - 4 g/t Au

Ave. processed grades
~1.4 - 1.8 g/t Au

300 sq miles = 255 Moz Au
Endowment



³ Barrick's 2019 NI 43-101 Technical Report on Goldstrike Mine (via minedocs.com/11/Goldstrike_Technical_Report_03222019.pdf)

⁴ Wikipedia (Cortez Gold Mine) and Placer Dome/Barrick historical reports (e.g., 2005 reserves at 1.4 g/t Au).

⁵ 2025 USGS Mineral Commodity Summary

Hot Springs Range Project - HSRP

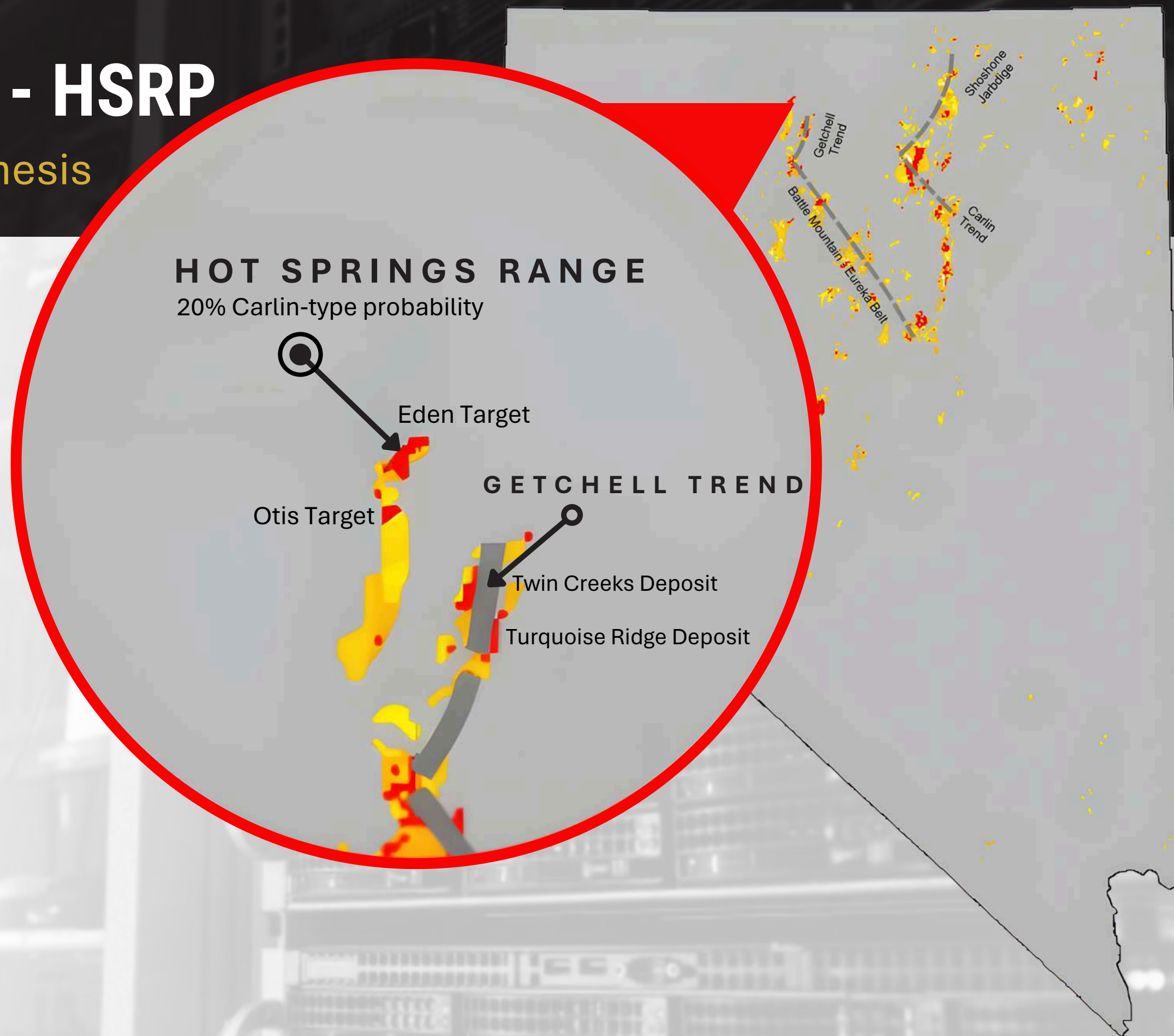
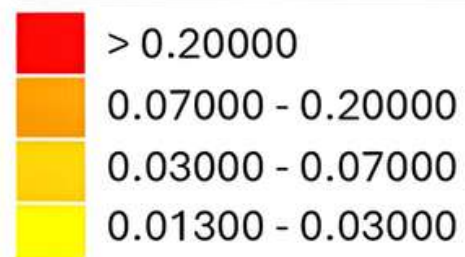
Early Predictive Model Validated Our Thesis

Eight-layer predictive model (2001)⁶

Based on regional data across the western U.S.

- Thesis for an undiscovered gold trend ~15 km NW
- Early “AI-style” model flagged Hot Springs Range with 20% Carlin-type probability
- Highest-probability zone parallels the Getchell Trend
- Area had no modern exploration — first data-driven check box that reinforced our conviction

Post. Prob. (prior - 0.0003)



⁶Source: Mihalasky (2001)

Surface Structural Analogue

HSRP vs. Getchell Trend

Positioned in the heart of a major-controlled gold district

HSRP also mirrors the structural architecture of a major gold trend

Kinross recent staked claims

Hot Springs Range Project

AngloGold Ashanti

Nevada Gold Mines (Barrick & Newmont JV)

2025

GETCHELL TREND

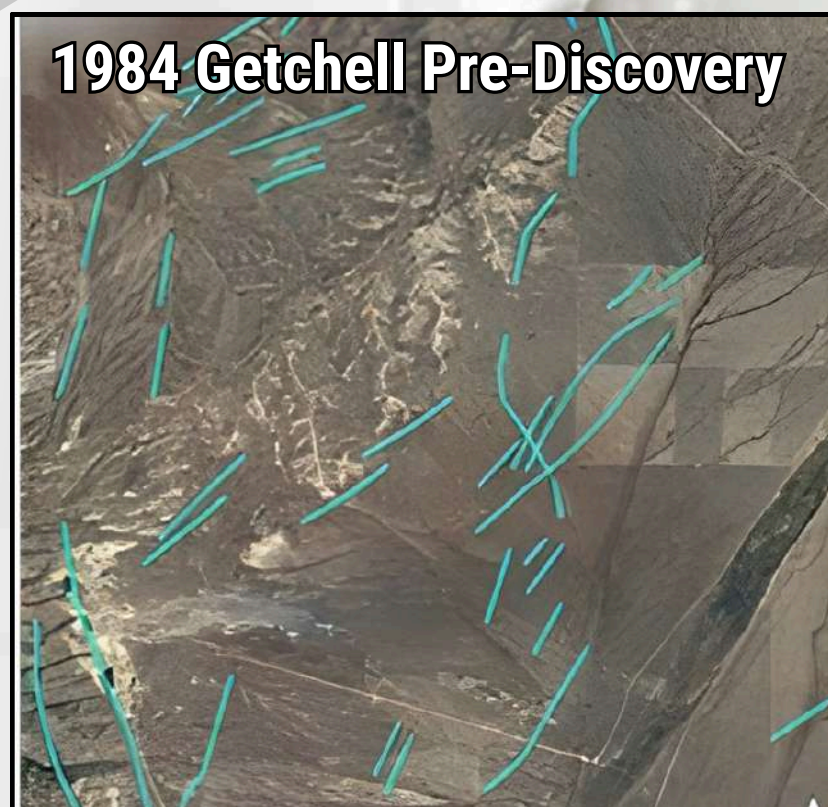
49.6 Moz Au

28Moz Au production;
20Moz M&I @ 5.4 g/t Au (110 Mt);
1.6Moz Inferred @ 3.2 g/t Au (16Mt)¹

2020 HSRP Endowment Unknown



1984 Getchell Pre-Discovery



Air Photo Comparison at Same Scale and Orientation

EDEN VALLEY

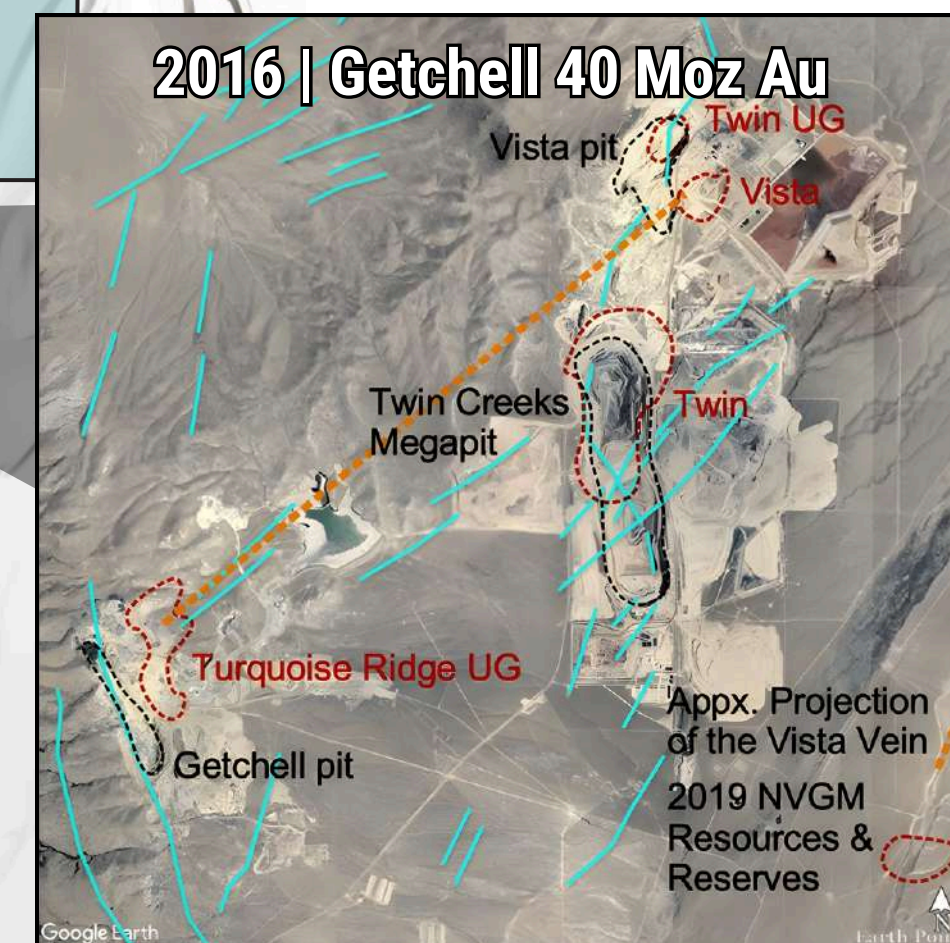
OSGOOD MOUNTAINS

Twin Creeks

Turquoise Ridge

i80 Gold Granite Creek

2016 | Getchell 40 Moz Au



Appx. Projection of the Vista Vein
2019 NVGM Resources & Reserves



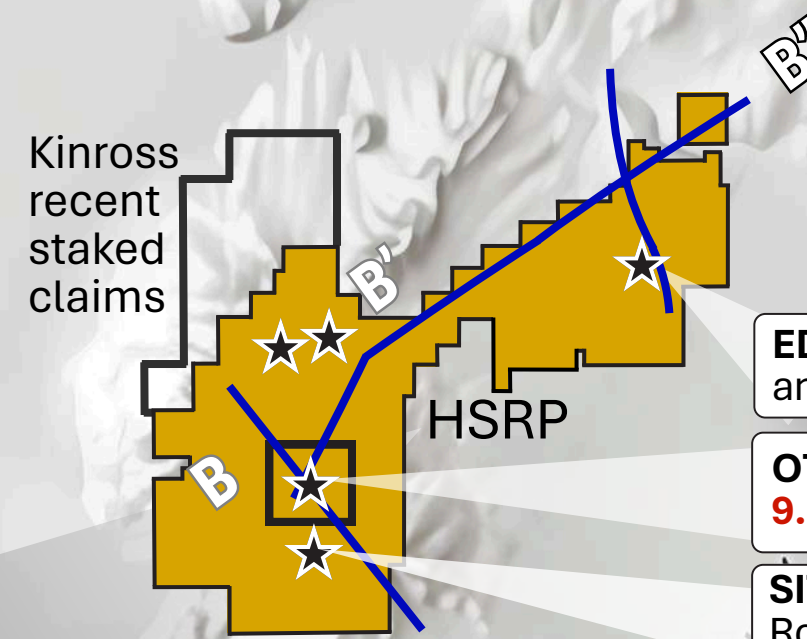
10 km

¹ Turquoise Ridge Technical Report, Nevada Gold Mines, March 2024 (available at: <https://barrick.com/English/investors/default.aspx> or NGM site)
HSRP Source: <https://eminentgoldcorp.com/site/assets/files/5967/hotspringsrange-43-10120220808-final.pdf>

HSRP | Getchell Trend Analogue

New Carlin System Under Cover

- Hidden under shallow cover – never explored until now
- 10+ km corridor with 5 targets (Getchell-style signature)
- All holes hit gold in first drilling – mineralization is widespread
- Best intercept to date: 9.2m @ 3.2 g/t Au (0xide)



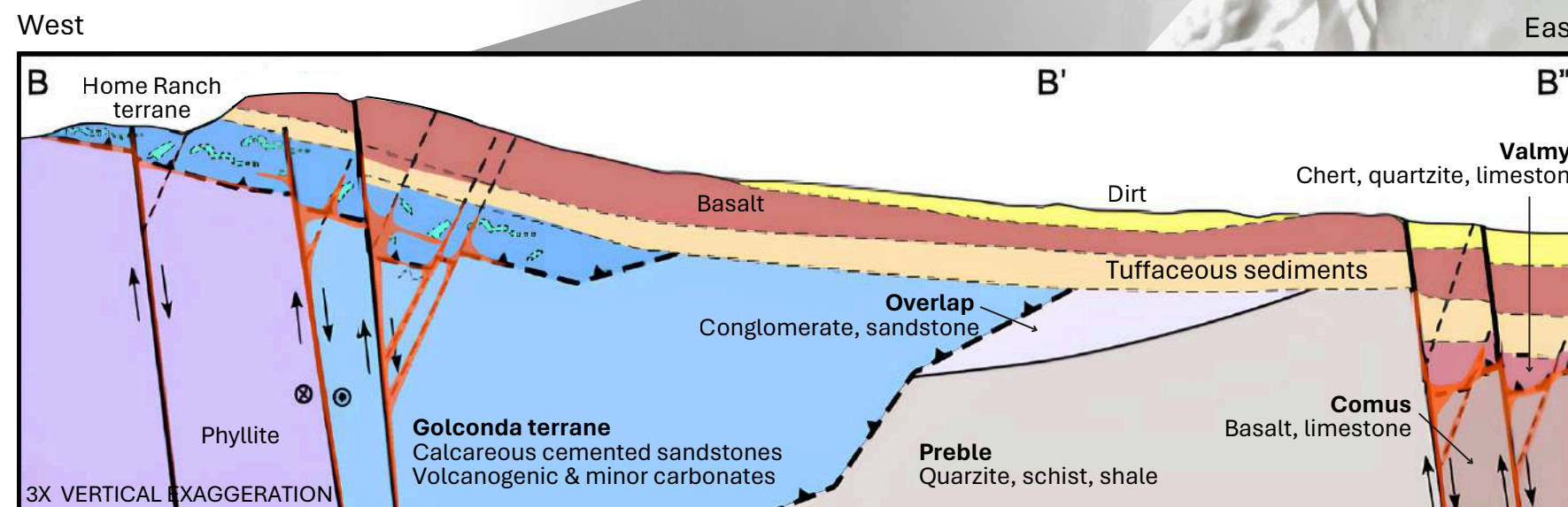
Analogous Pre-Mining Surface Geochemistry

| | HSRP | Getchell |
|----------|--------------|------------|
| Au (g/t) | 0 - 0.7 | 0 - 0.5 |
| As (ppm) | 1 - 2,400 | 50 - 1,000 |
| Hg (ppm) | 0.005 - 96 | 0 - 0.5 |
| Sb (ppm) | 0.06 - 1,400 | 5 - 50 |

Pathfinder signature similar to Getchell Trend deposits

Hot Springs Range Project District-scale Carlin potential

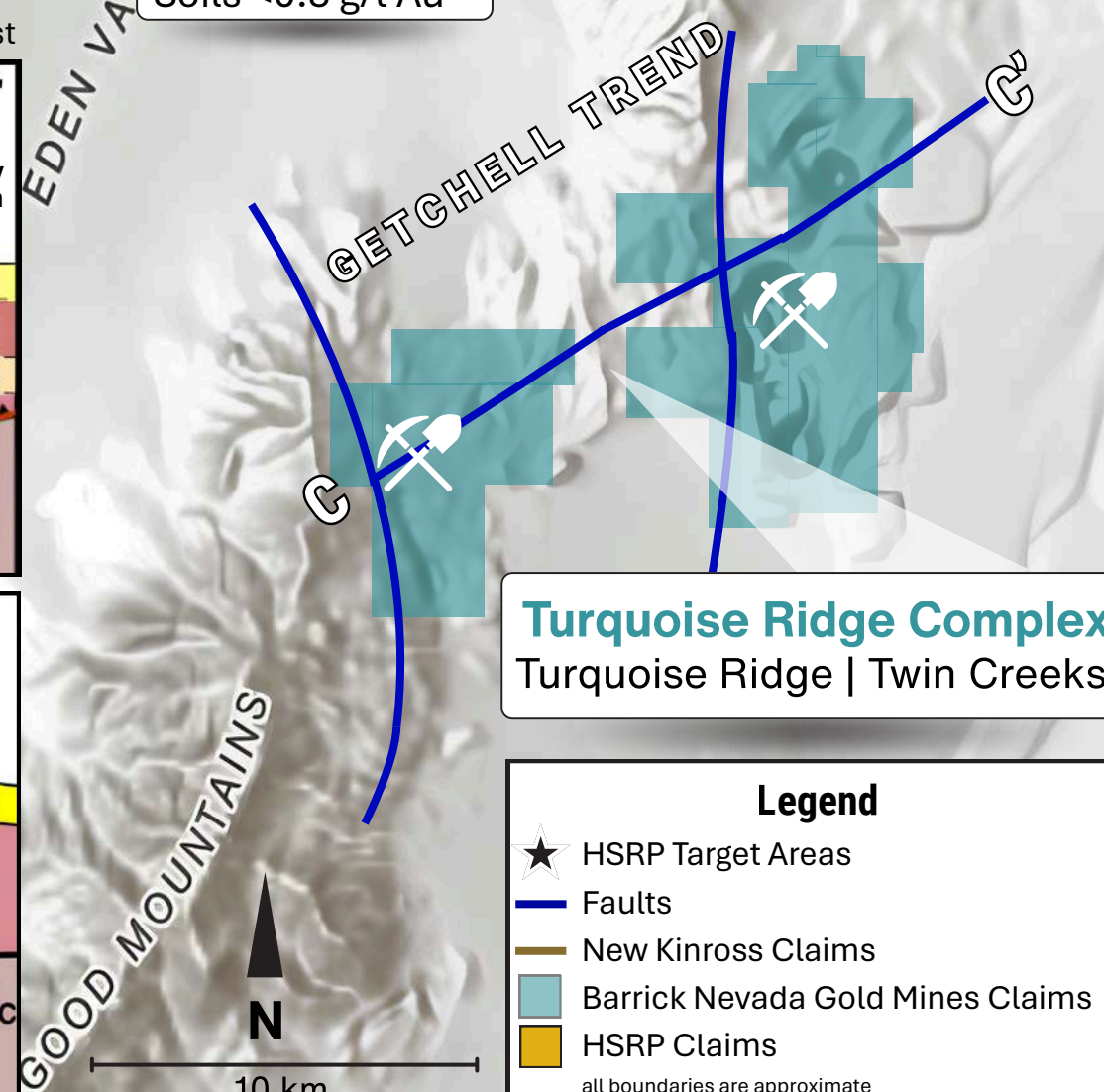
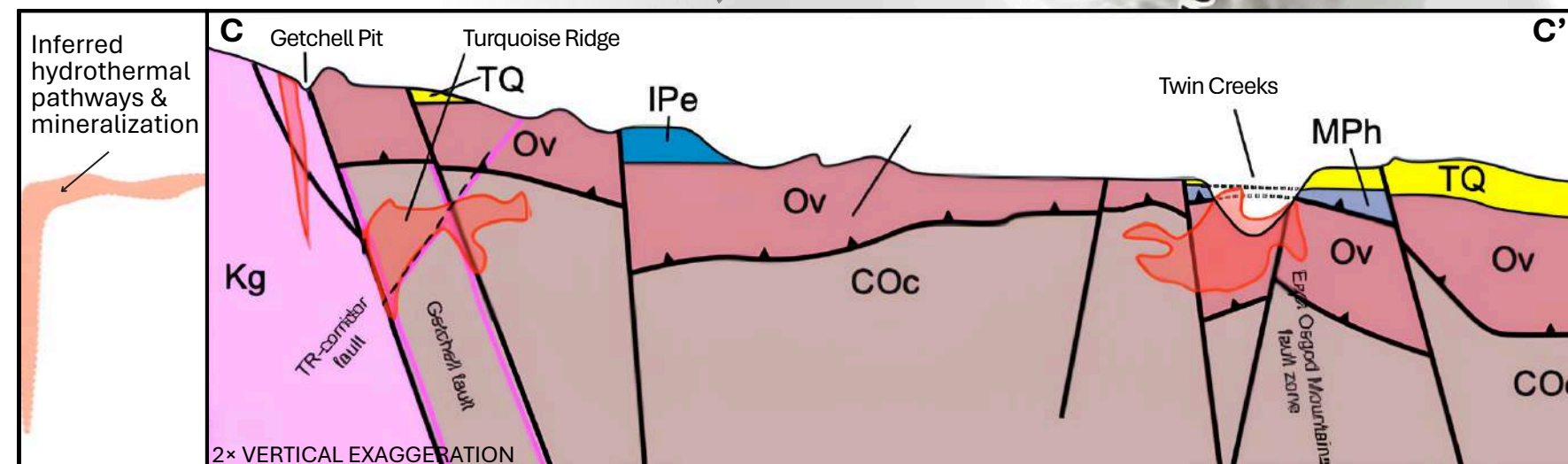
Interpretive District-Scale Cross Section Looking North
Section shows scale and vertical architecture consistent with Getchell deposits



Getchell Trend

49.6 Moz Au Endowment

Interpretive District-Scale Cross Section Looking North
Proven Mineralized System
Deep feeder faults + thrust traps delivering gold



Turquoise Ridge Complex

Turquoise Ridge | Twin Creeks

Legend

- ★ HSRP Target Areas
- Faults
- New Kinross Claims
- Barrick Nevada Gold Mines Claims
- HSRP Claims

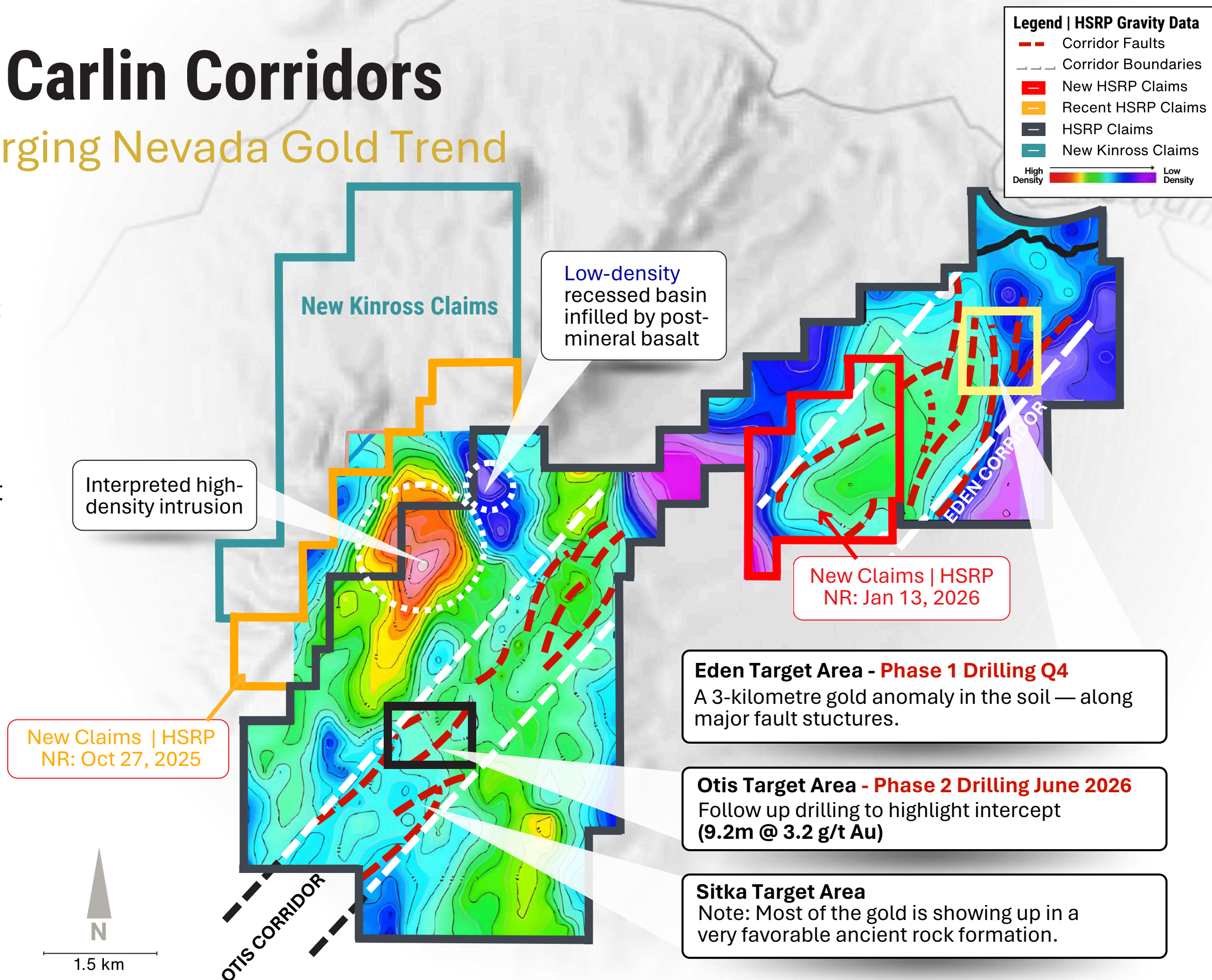
all boundaries are approximate

¹ Turquoise Ridge Technical Report, Nevada Gold Mines, March 2024 (available at: <https://barrick.com/English/investors/default.aspx> or NGM site)
HSRP Source: <https://eminentgoldcorp.com/site/assets/files/5967/hotspringsrange-43-10120220808-final.pdf>

Gravity Reveals Buried Carlin Corridors

Strategic Staking Secures Emerging Nevada Gold Trend

- Gravity validates our thesis — revealing structures beyond aerial observation
- ~10 km of prospective corridors confirmed: Otis (6 km) | Eden (4 km)
- Eminent secured all critical ground — full control of the Eden anomaly
- Kinross (13.8% stake) expanding footprint strengthening its foothold in the emerging district
- High-density intrusions beside low-density basins — a buried Carlin feature



Quick Gravity Survey Explainer
 Gravity surveys detect density contrasts in subsurface rocks. Contacts between high- and low-density zones often highlight buried intrusions, faults, or alteration — prime targets for hidden gold mineralization under cover.

Surface Gold Anomalies Confirm Key Targets

Gold-in-Soil & Rock Anomalies Overlying Key Structures

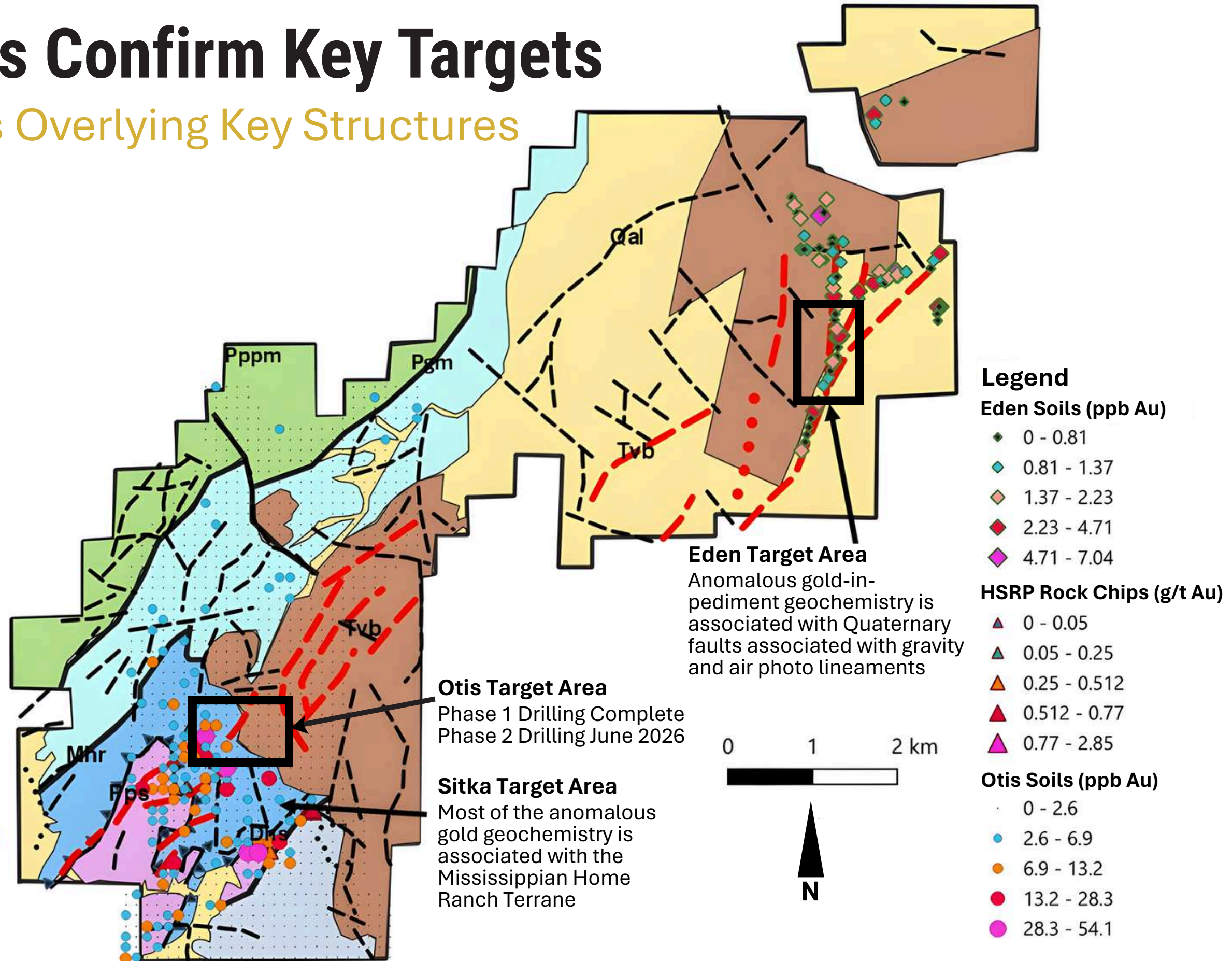
Strong surface gold anomalies

- soils up to 54.1 ppb Au
- rocks up to 2.85 g/t Au

Line up perfectly with key structures and favorable host rocks—direct evidence of a mineralized system at depth.

Geology Legend

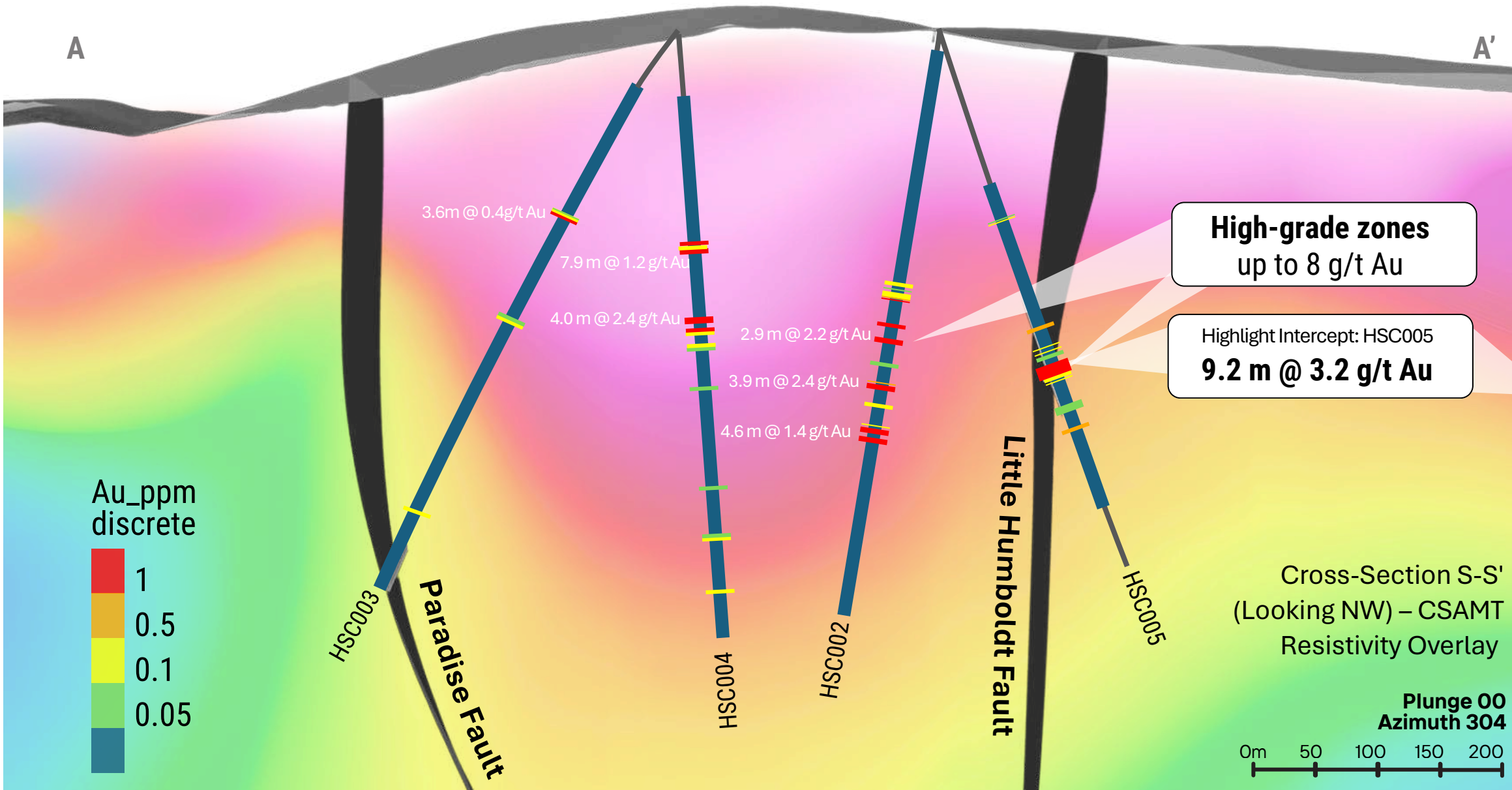
- LINEARS “Corridor” gravity-interpreted linears (thick red dashed lines) and other interpreted linears (black dashed lines)
- faults separating different lithotectonic terranes
- ▲ thrusts separating Mhr above from Pps below
- Tvb** Early Miocene Vesicular black aphanitic basaltic andesite
- Qal** Undifferentiated Creek and Pediment Alluvium
- Pppm** Permian Poverty Peak Melange: Basaltic Tuff and Argillite Matrix; Mafic Blocks
- Pgm** Permian Golconda Melange: Quartzite-Sandstone; Chert Blocks
- Mhr** Mississippian Home Ranch subterrane: andesite and limestone
- Pps** Permian phyllite and slate
- Dhs** Devonian sandstone



Otis | Phase 1 Drilling Complete

Confirmed Fault-Controlled Oxide Gold System

Fault-controlled, oxide-hosted gold systems deliver scale, continuity, and mine life – the same attributes that make Carlin deposits globally sought after.



| Hole ID | From (m) | To (m) | Width (m) | Au (g/t) |
|---------|----------|--------|-----------|-------------------|
| HSC002 | 272.8 | 275.7 | 2.9 | 2.2 |
| HSC002 | 310.4 | 314.3 | 3.9 | 2.4* |
| | | | incl. | 0.5m @ 8.0g/t Au |
| HSC002 | 347.1 | 351.7 | 4.6 | 1.4* |
| | | | incl. | 0.9m @ 4.4g/t Au |
| HSC003 | 178.4 | 180.9 | 3.6 | 0.4 |
| HSC004 | 178.6 | 186.5 | 7.9 | 1.2 |
| HSC004 | 239.5 | 243.5 | 4.0 | 2.4 |
| HSC004 | 250.9 | 254.2 | 3.3 | 0.5 |
| HSC005 | 295.50 | 304.74 | 9.2 | 3.2 † |
| | | | incl. | 0.9m @ 5.4 g/t Au |
| | | | incl. | 1.1m @ 4.6 g/t Au |

* Composite intercept

† Downhole widths reported; true widths estimated unknown

Representative oxide core (below)

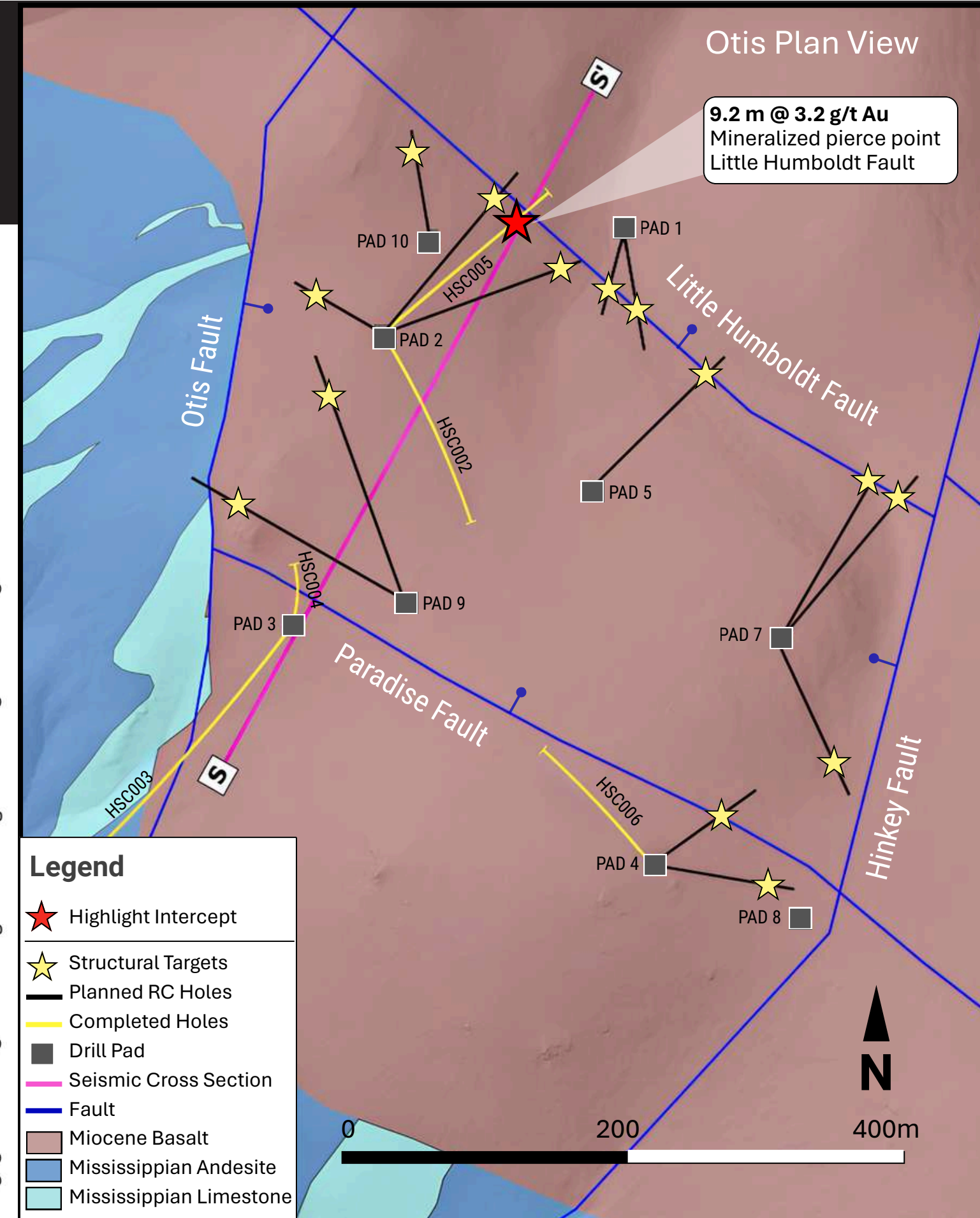
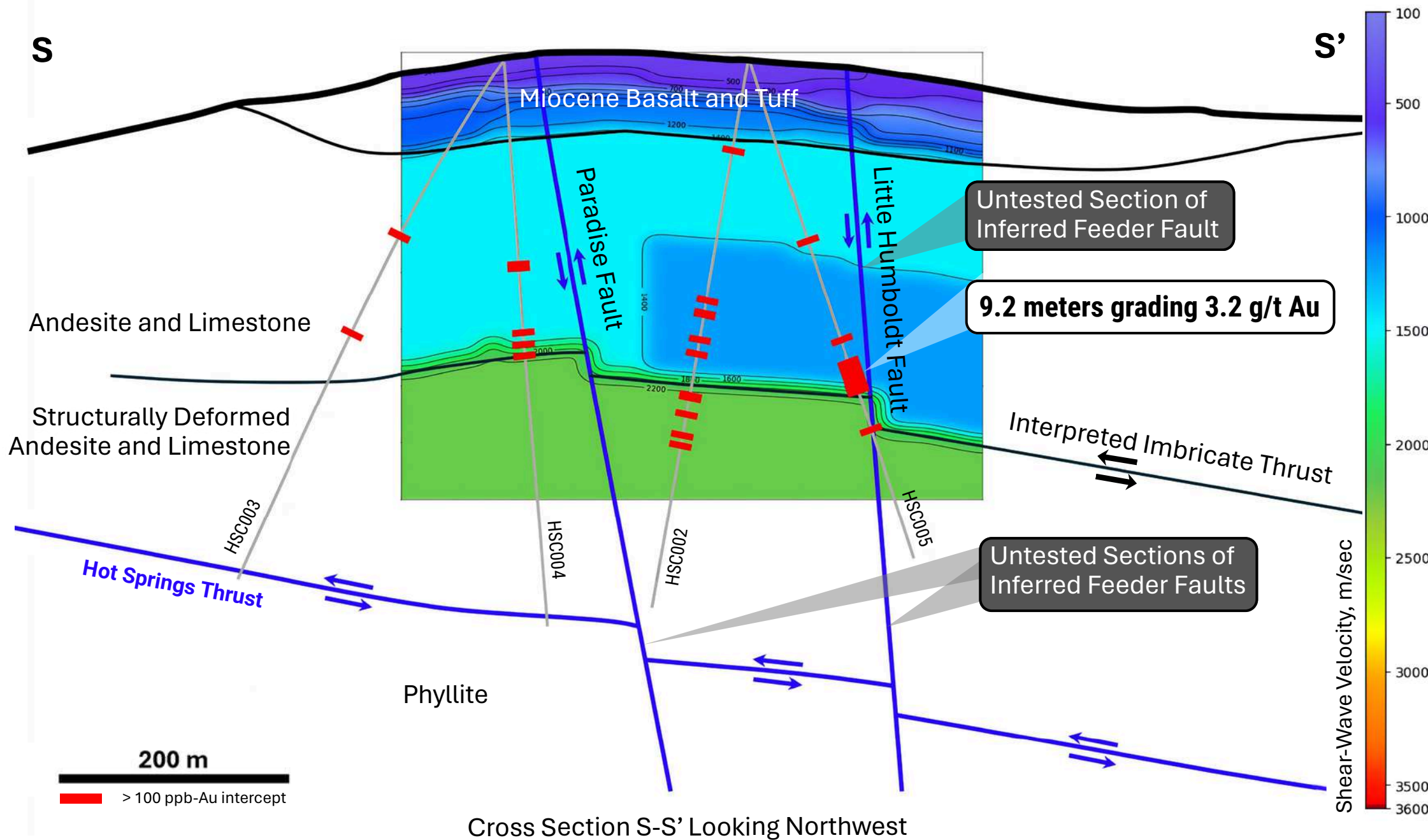
Consistent gold grades through altered host rock (light grey)



Otis | Phase 2 Drill Program | Refined Targeting

10,000 Meters of Drilling to Expand Model and Scale

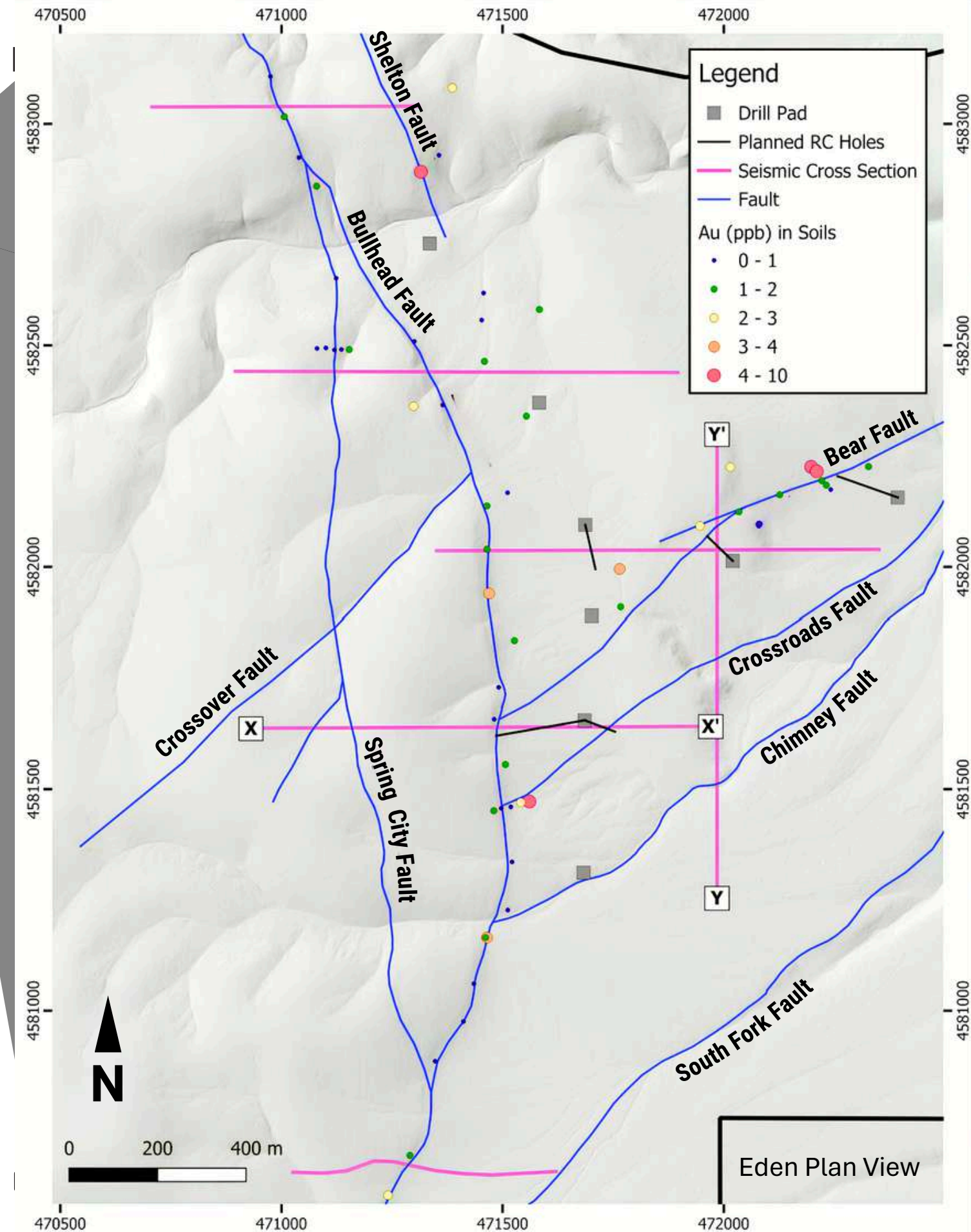
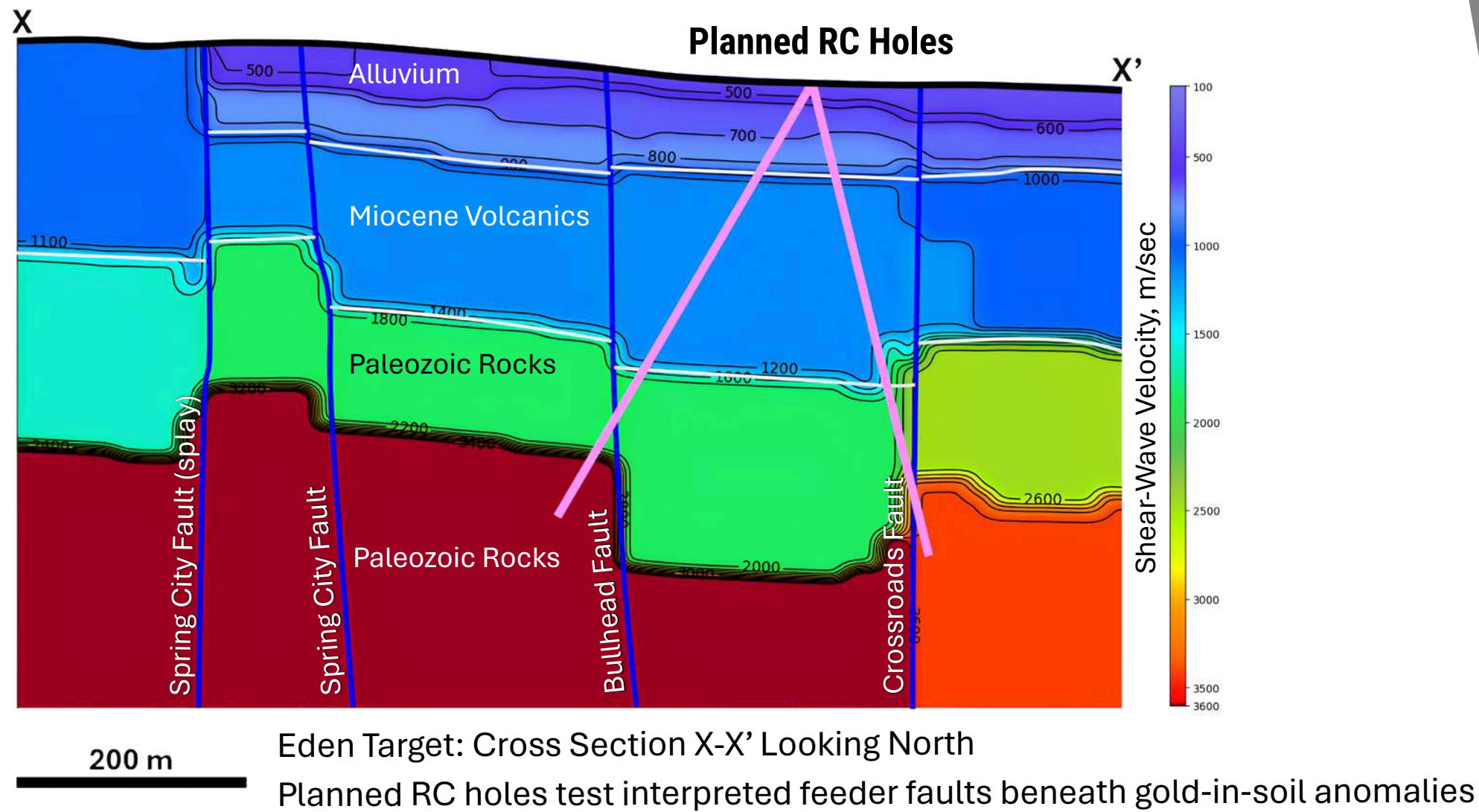
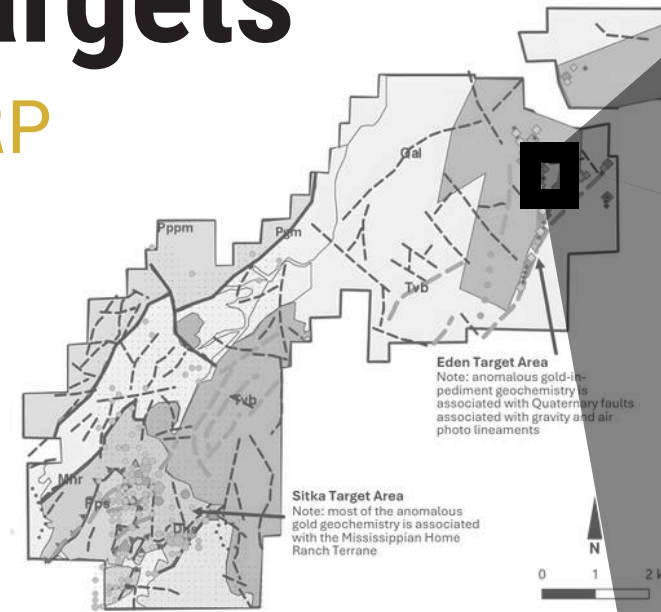
Seismic data sharpens fault geometry and defines precise pierce points
 Drilling focuses on zones where all datasets align



Eden | Phase 1 Drilling Targets

Advancing The Second Corridor at HSRP

- Same structural style as Otis (Carlin)
- Clear pathfinder response at surface
- 3km soil-gold anomaly traces deep structures
- Untested target in the emerging trend
- Permitted | Drilling following Otis



Celts | Applying the Silicon Discovery Model

Recognized by same discovery team as a Silicon-style system

Similar feeder geometry to Silicon's mineralized zone

Target directly beneath the steam-cap

Dome-hosted volcanic complex

Permitted | **Drilling 2026**



Target Concept

Our initial drill program follows AngloGold's discovery strategy—targeting the fault beneath the steam cap

AngloGold Ashanti | Arthur Gold Project²

Silicon ~3.4 Moz Au M&I @ 0.9 g/t (122Mt)

~800 Koz Au Inferred @ 0.7g/t (38Mt)

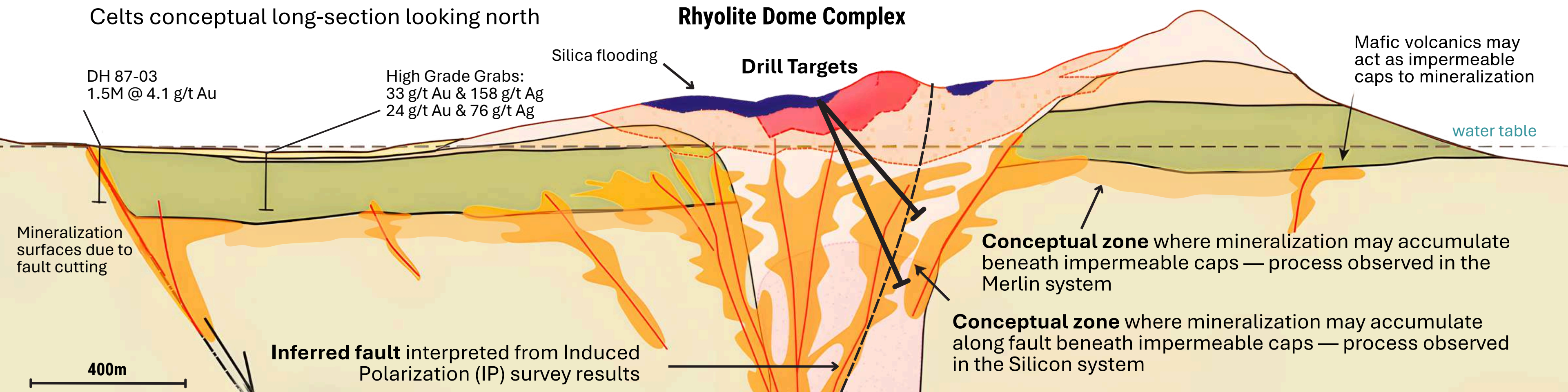
Merlin ~12.1 Moz Au Inferred @ 1.1 g/t (355 Mt)

Silicon Discovery Hole

SD-004 79m @ 1.76 g/t Au

Celts conceptual long-section looking north

Rhyolite Dome Complex



²Silicon and Merlin resources: AngloGold Ashanti (effective Dec 31, 2024; disclosed Feb 19, 2025 via Orogen Royalties NR dated Feb 20, 2025)
Early-stage exploration; no mineral resource defined. Analogies based on geological similarities; see relevant press releases and technical reports for details.

Gilbert South | Untested at Depth

Third Shot in Eminent's Discovery Pipeline

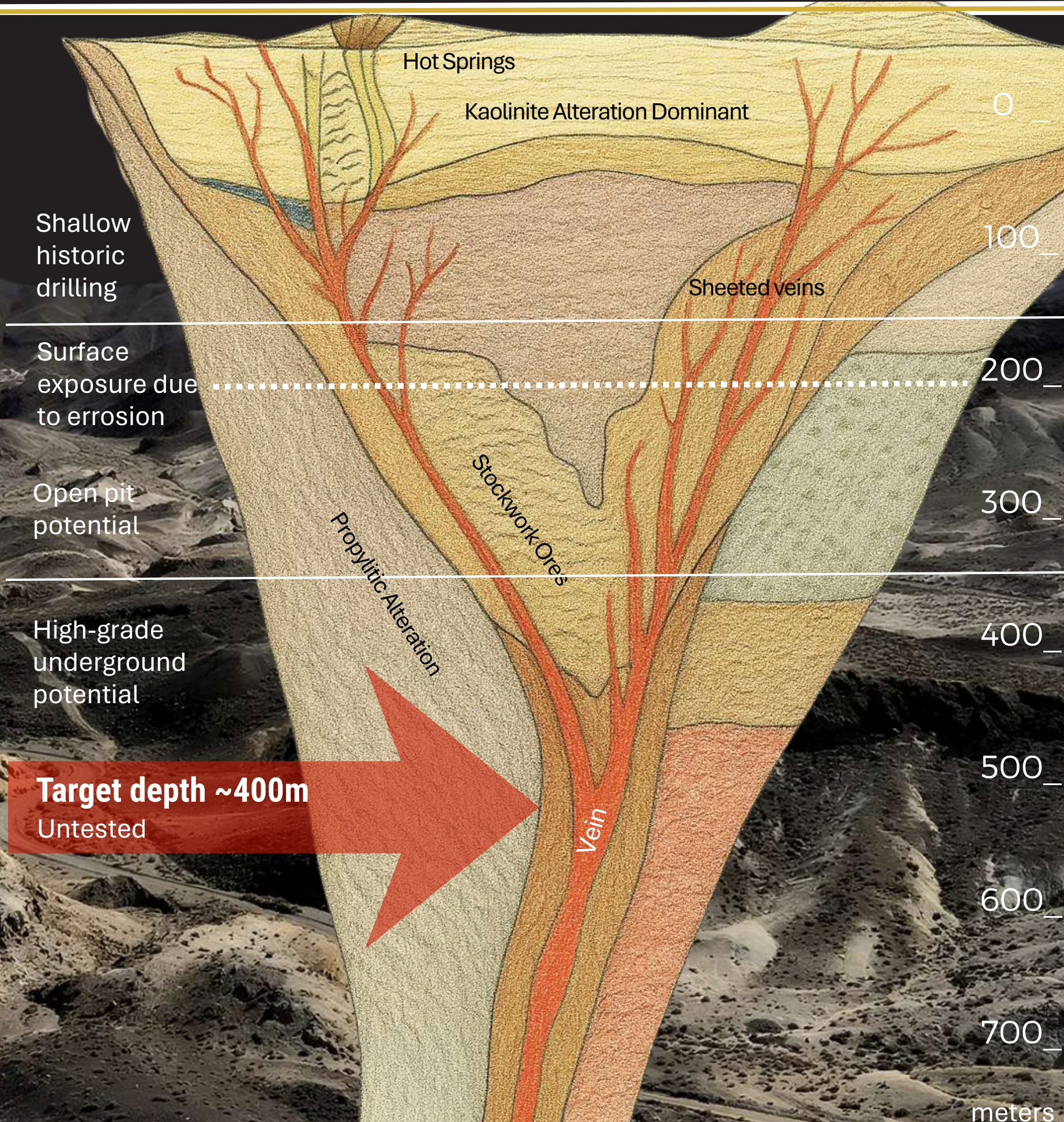
Widespread high-grade gold at surface (7.4 – 143 g/t Au)



Multi-kilometre gold-bearing vein corridors (up to 143 g/t Au)

- Historic drilling targeted shallow oxide zones — deeper feeder structures remain untested
- Drill-ready opportunity beneath a well-defined epithermal vein system
- Target depth ~400 m — potential for high-grade underground mineralization

Nevada's Walker Lane Trend — proven multi-million-ounce district



Near Term Catalysts

Q2 2026 – HSRP Acceleration

- ✓ Announce RC drill program + budget (meters planned)
 - RC drilling at Otis – step-outs + test additional structures
- ✓ Seismic survey at Eden to sharpen drill targets at depth
 - HSRP VTEM Study to further define drill targets
- ✓ Follow-up seismic at Otis to define deeper structures
 - RC/Core drilling at Eden – test 3km anomalous structure

Q4 2026 – Expanding Pipeline

- Complete additional geophysical surveys at Celts to refine drill targeting
- Plan & launch maiden drilling at the Celts Project
(AngloGold Silicon analogue)

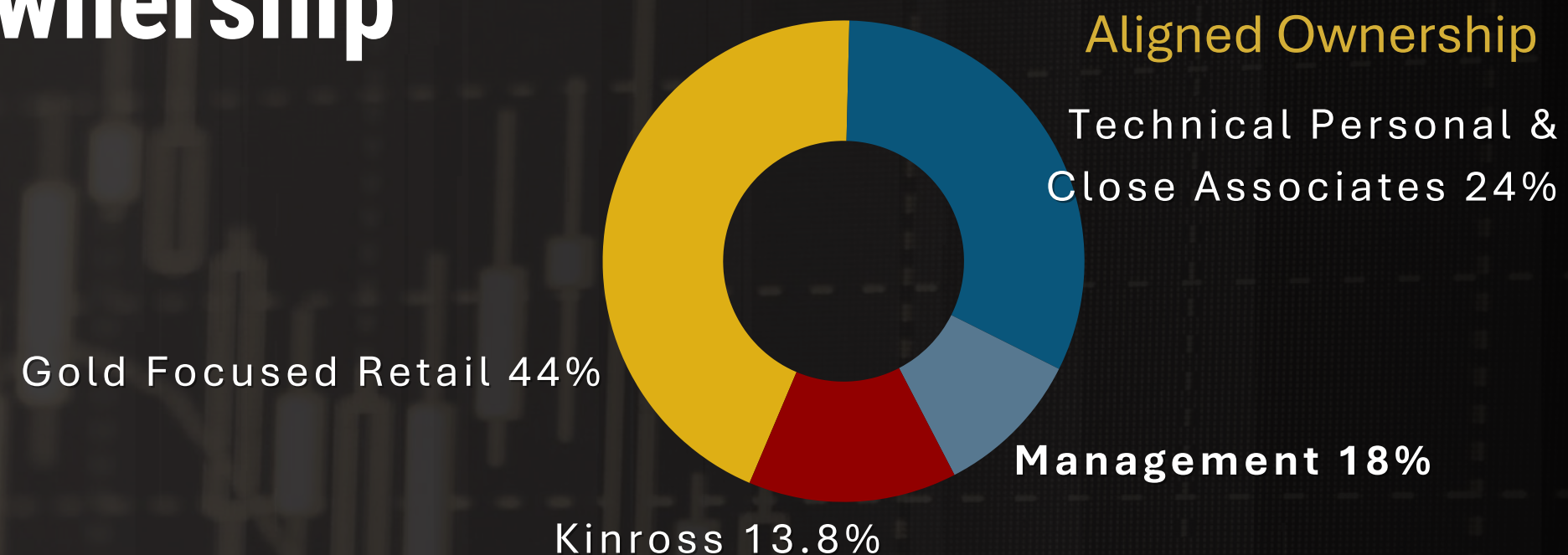


Discovery Focused
**Driving Value Across Exploration
& Corporate Milestones**

Capital Allocation: 80 % Exploration | 15 % G&A/marketing | 5 % Working capital

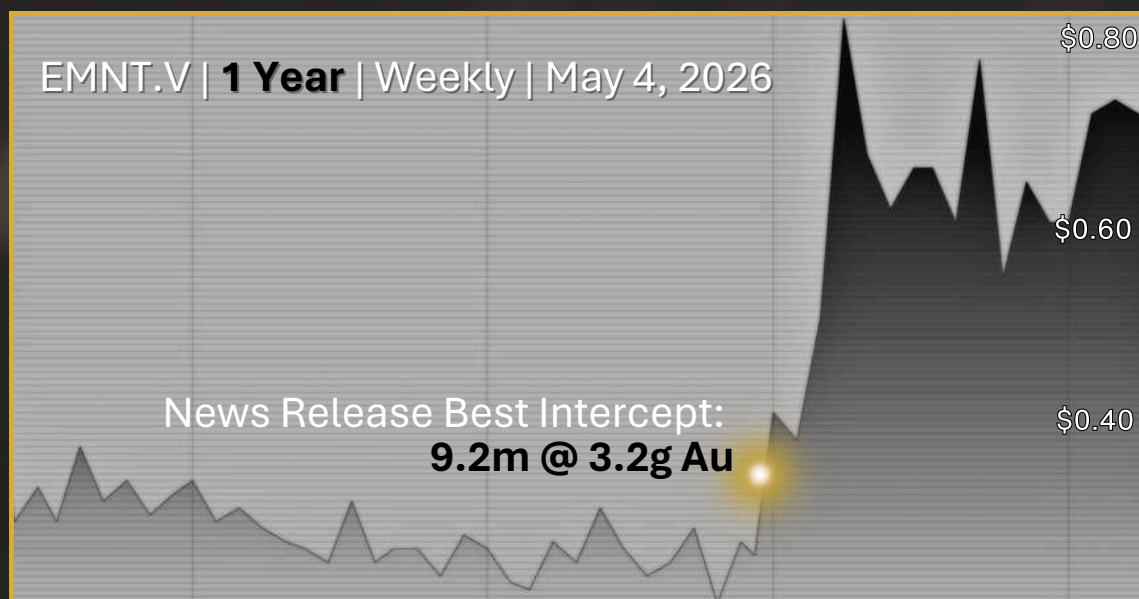
Capital Structure & Strategic Ownership

| | |
|---------------------------------|-------------------|
| Issued & Outstanding | 82,952,936 |
| Options | 5,741,667 |
| Warrants | 18,041,005 |
| Fully Diluted | 106,735,608 |
| Market Cap. | ~46M |



Kinross Gold Corp. 13.8%

Management / Insiders & Close Associates ~42%



Warrants Outstanding

| Expire | Price | Amount |
|---------------|--------|-----------|
| Jul 25, 2026 | \$0.50 | 1,640,00 |
| Sept 29, 2026 | \$0.50 | 1,921,875 |
| Aug 30, 2026 | \$0.55 | 4,511,746 |
| Oct 15, 2026 | \$0.55 | 4,204,423 |
| May 2, 2027 | \$0.70 | 1,975,043 |
| May 2, 2027 | \$1.50 | 3,787,118 |

Options Outstanding

| Expire | Price | Amount |
|---------------|--------|-----------|
| Jun 30, 2026 | \$0.95 | 150,000 |
| Nov 11, 2026 | \$0.75 | 950,000 |
| April 3, 2029 | \$0.32 | 500,000 |
| Dec 31, 2029 | \$0.45 | 1,216,667 |
| Oct 9, 2030 | \$0.35 | 2,925,000 |

Prior Financings

| Date | Price | Amount |
|-----------|--------|--------|
| Sept 2019 | \$0.10 | \$735k |
| Jun 2020 | \$0.20 | \$3.1M |
| Sept 2021 | \$0.70 | \$2.2M |
| Sept 2022 | \$0.45 | \$1.4M |
| Sept 2023 | \$0.32 | \$965k |
| Oct 2024 | \$0.26 | \$2.4M |
| May 2025 | \$0.40 | \$4.3M |

Opening the Door to a Major Carlin Gold Discovery

Investment Thesis

Peer Precedent & Re-rating Potential

Early-stage Nevada discoveries deliver **3–8×** re-ratings on follow-up — 10km multi-target confirmation could drive **25–50×** potential.

Great Bear as a precedent for discovery-driven re-ratings: Delivered a multi-tens-of-times re-rating (~50×+) as scale and continuity were confirmed.

Subscribe



- Early-Stage Entry
- Exceptional Leverage
- Elite Jurisdiction
- Proven Leadership
- Strategic Alignment
- Macro Tailwinds

DISCOVERY

1-604-505-7751 | info@eminentgoldcorp.com | www.eminentgoldcorp.com

EARLY-STAGE OPPORTUNITY | NEVADA | 2026



PURSUING MAJOR GOLD DISCOVERIES

IN THE GREAT BASIN

Appendix



Hot Springs Range Project | Flagship

Eminent holds 100% interest in 521 claims totaling >4,311 hectares at HSRP.

Fully Executed Definitive Agreement

Under the terms of the previous option Agreement, the Company had up to five years to acquire a 100% interest in the Property by making cumulative cash payments of USD \$136,140 and cumulative share payments of 1,650,000 common shares in the capital of the Company, followed by a \$1,500,000 payment payable in cash or common shares at the option of the Company. The Company completed the terms of this agreement in April of 2025

Net Smelter Royalty of 2% which the Company may purchase in 0.1% increments for USD\$100,000 for each increment up to maximum of 1%



Celts Project

Eminent holds 100% interest consisting of 67 unpatented mining claims on BLM ground (560 hectares). Located 13 kilometers northeast of Goldfield.

Fully Executed Definitive Agreement

Total Payment: US\$400,000 - At Closing:

- US\$30,000 in cash
- US\$45,000 in Eminent common shares

Within Six Months of Closing: US\$325,000 in cash or Eminent common shares (at Eminent's discretion, subject to regulatory approval)

Property Claims: 3% net smelter return (NSR) royalty with option to repurchase 1% of the royalty for US\$1.5 million (reducing the NSR to 2%)

Proceeds Split: US\$200,000 in cash and/or shares to each Orogen and a subsidiary of Altius Minerals Corporation ("Altius")



Gilbert South Project

Eminent holds 100% interest in the 110 unpatented claims (1,070 hectares) located 42 km west of Tonopah in the Walker Lane trend, Nevada.

Fully Executed Definitive Agreement

By way of Consideration, the Company issued 350,000 common shares to the Seller. An additional 200,000 common shares will be issued when the company initiates a drill program.

The Timberline claims are currently subject to a 3% net smelter return royalty, the Nevada Select claims are currently subject to a 2% net smelter return royalty, and the GL claims are currently subject to a 2.25% net smelter return royalty. Eminent shall have the option and right to repurchase 1% of the GL royalty for \$1 million (U.S.). The Seller shall have the option to buy down 1% of the Timberline net smelter return for \$1.5 million (U.S.).

Glossary: Key Technical & Industry Terms

Carlin-Style Gold System

Sediment-hosted gold deposits typical of Nevada, characterized by fine-grained, disseminated gold associated with deep crustal structures and hydrothermal alteration. Often found in large, district-scale structural corridors.

Epithermal System

A shallow-level hydrothermal gold system formed at low temperatures and pressures. These systems can produce high-grade veins or disseminated oxide gold near surface. Oxide vs. Sulfide Mineralization

Oxide: Near-surface, weathered material where gold is liberated from sulfides, often more amenable to simple extraction methods.

Sulfide: Deeper, unweathered material where gold is locked in sulfide minerals, typically requiring more complex processing.

CSAMT (Controlled-Source Audio-Frequency Magnetotellurics)

A geophysical method used to map subsurface resistivity. In exploration, it helps identify faults, fluid pathways, and structural zones that may host gold mineralization.

Gravity Survey

A geophysical technique measuring variations in the Earth's gravitational field to identify density contrasts. Useful for mapping basin geometry, structural corridors, and potential feeder zones.

RC Drilling (Reverse Circulation)

A drilling method that produces rock chips rather than core. It is fast and cost-effective for testing structures, faults, and oxide extensions across large corridors.

Core Drilling

A drilling method that retrieves intact cylindrical rock samples ("core"). Provides detailed geological, structural, and mineralogical information used for system validation.

NSR (Net Smelter Return) Royalty

A royalty paid to the property owner based on a percentage of the revenue from the sale of mined material, after smelting and refining costs. Many of your projects include NSRs with partial buy-down options.

Earn-In Agreement

A staged acquisition structure where the company can earn up to 100% ownership of a project by completing specified cash payments, share issuances, and/or exploration milestones over time.

Structural Corridor

A major fault-controlled zone that acts as a conduit for mineralizing fluids. Your deck references a 10 km gravity-defined corridor at HSRP.

Targeting Model

An integrated interpretation combining geophysics (gravity, IP, CSAMT), drilling, and geological mapping to refine drill targets and vector toward higher-grade zones.